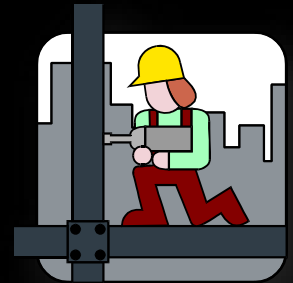




# 2015 Bond North East Agriscience Phase 2 Facility Addition Project Schematic Design Presentation



Garrett J. Sullivan, Executive Director  
Construction Management and Engineering Department

May 8, 2017

# Schematic Design Presentation Agenda

---

- Project Design Team
- Program Review
- Project Site Analysis
- Concept Design Plans
- Budget Review
- Project Phasing Plan
- Schedule Review
- Staff Recommendation



# Johnson HS Fine Arts Project Design Team

---

- Architect: Garza/Bomberger & Associates
- MEP Engineer: MEP Engineering
- Structural Engineer: Persyn Engineering
- Civil Engineer: MTR Engineers
- Roofing Engineer: Wiss, Janey, Elstner & Associates
- Technology Engineer: Combs Consulting Group
- Building Code Engineer: Protection Development, Inc.
- Landscape Architect: Cooper-Lochte Landscape Architecture
- Acoustical Engineer: Bonner Associates
- Geotechnical & Material Testing: Drash Consultants
- Test, Balance, and Commissioning: Engineered Air Balance





# North East Agriscience Facility Site Aerial



Campus Site Aerial

North East Agriscience  
Madison HS

# 2015 Bond Program Review for North East Agriscience Phase 2 Facility Addition Project

- Construct New Ag Engineering & Fabrication Shop (13,944 sq. ft.)

Ag Engineering & Fabrication Shop	Classroom 1	979
	Classroom 2	973
	Ag Implements Lab	628
	Multiple Cylinder Engine Lab	621
	HVAC Lab	414
	Hydraulics Lab	624
	Powertrains Lab	829
	Quick Service Bay	951
	Long Service Bay	506
	Paint Booth	1,485
	Common Work Area	612
	Advanced Machinery Lab	1,243
	Wood Fabrication Lab	2,078
	Metal Fabrication Lab	1,660
	Large Project Fabrication	341
Subtotal		13,944

# 2015 Bond Program Review for North East Agriscience Phase 2 Facility Addition Project

- Construct New Meat Processing Lab (5,131 sq. ft.)

<b>Meat Processing Lab</b>	<b>Classroom</b>	<b>798</b>
	<b>Food Safety Lab</b>	<b>412</b>
	<b>CUTTING FLOOR AREA</b> - Breakdown Area = 360 sq. ft. - Knife Work Area = 600 sq. ft. - Product Preparation Area = 325 sq. ft. - Grinding/Stuffing Area = 555 sq. ft. - Further Processing = 345 sq. ft.	<b>2,563</b>
	<b>Blast Freezer</b>	<b>102</b>
	<b>Meat Smoker Area</b>	<b>92</b>
	<b>Storage</b>	<b>217</b>
	<b>Loading Dock</b>	<b>192</b>
	<b>Meat Cooler</b>	<b>578</b>
	<b>Lockers and Laundry</b>	<b>177</b>
	<b>Subtotal</b>	<b>5,131</b>



# 2015 Bond Program Review for North East Agriscience Phase 2 Facility Addition Project

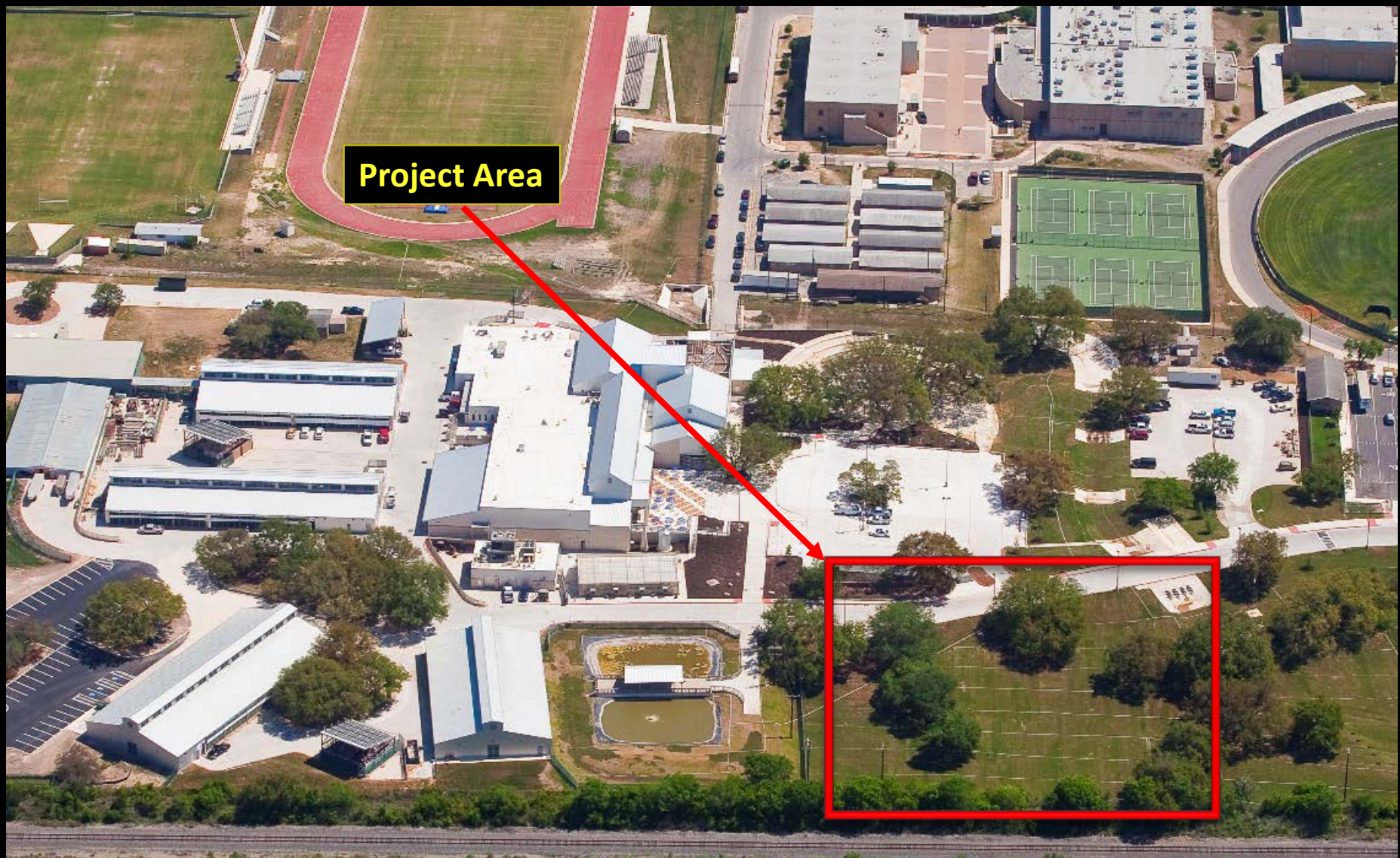
- Construct General Facility Support and MEP Areas (6,204 sq. ft.)

<b>General Facility Support Areas</b>	Faculty Offices (2) 1 Office @ 125 sq. ft. and 1 Office @ 200 sq. ft.	417
	Faculty/Staff Restrooms (2)	194
	Student Restroom (Mens and Womens)	505
	Main Facility Corridor (16 ft wide) with Student Lockers (200 Double Tier)	2,032
	Subtotal	3,148
<b>MEP Support Areas and Net to Gross</b>	Mechanical and Electrical Support Rooms	266
	Facility Wall Thickness	2,890
	Subtotal:	3,156

- Agriscience Facility Phase 2 Program Summary (25,379 sq. ft.)

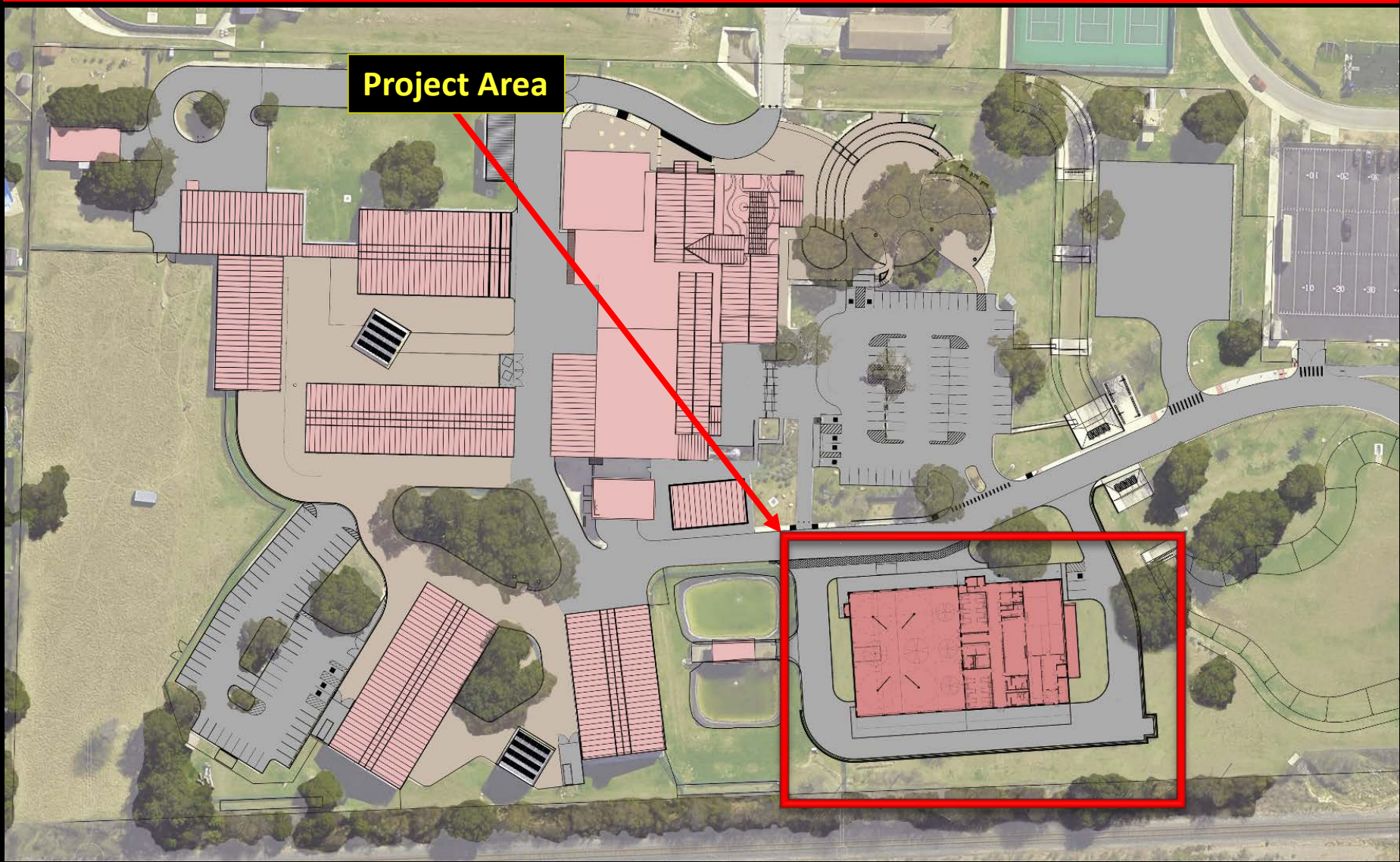
<b>North East Agriscience Facility Phase II Program Summary</b>	Ag Engineering and Fabrication Shop	13,944
	Meat Processing Lab	5,131
	General Facility Support Areas	3,148
	MEP Support Areas and Net to Gross	3,156
	Subtotal:	25,379

# North East Agriscience Phase 2 Project Site Analysis



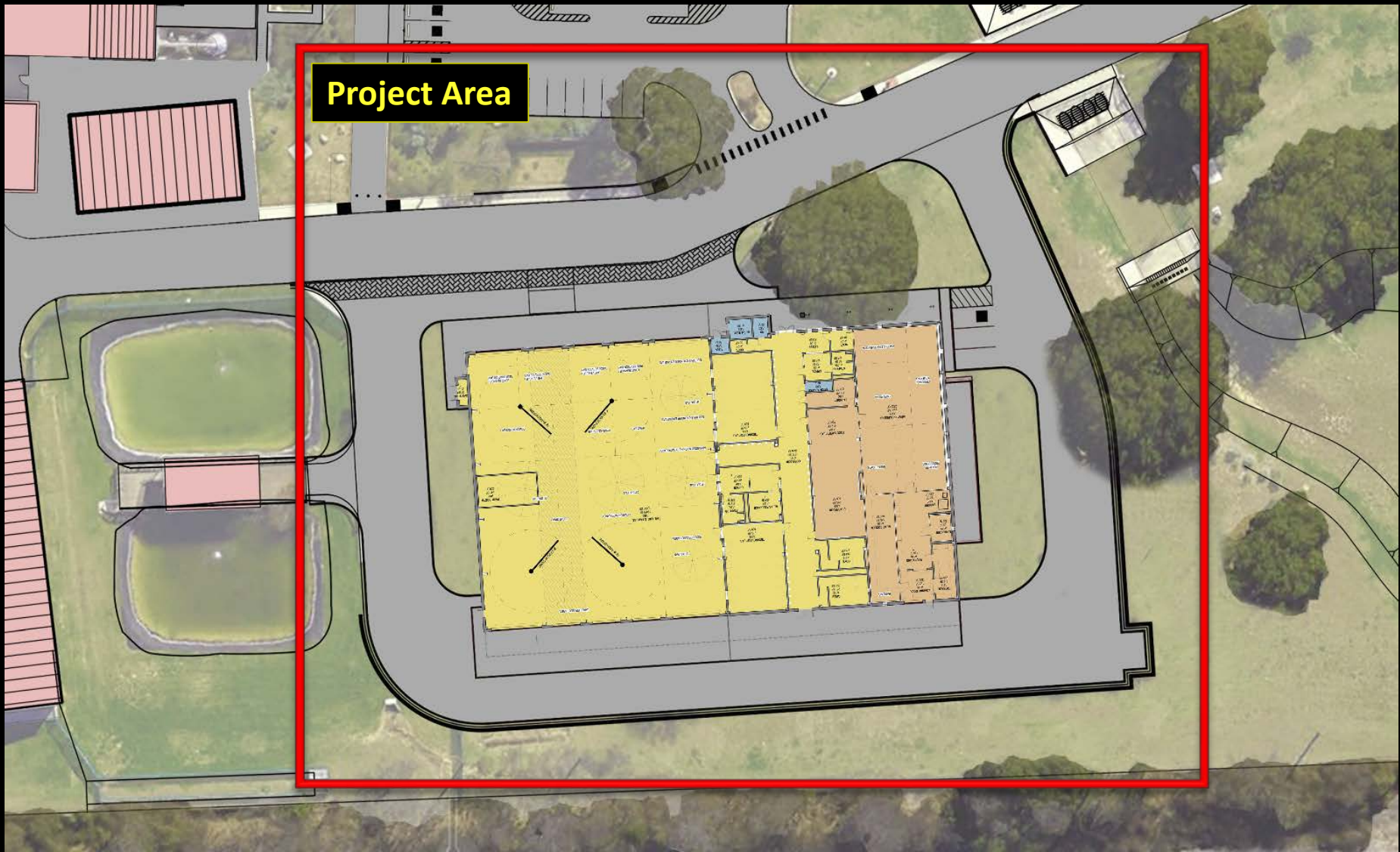


# North East Agriscience Phase 2 Project Site Analysis

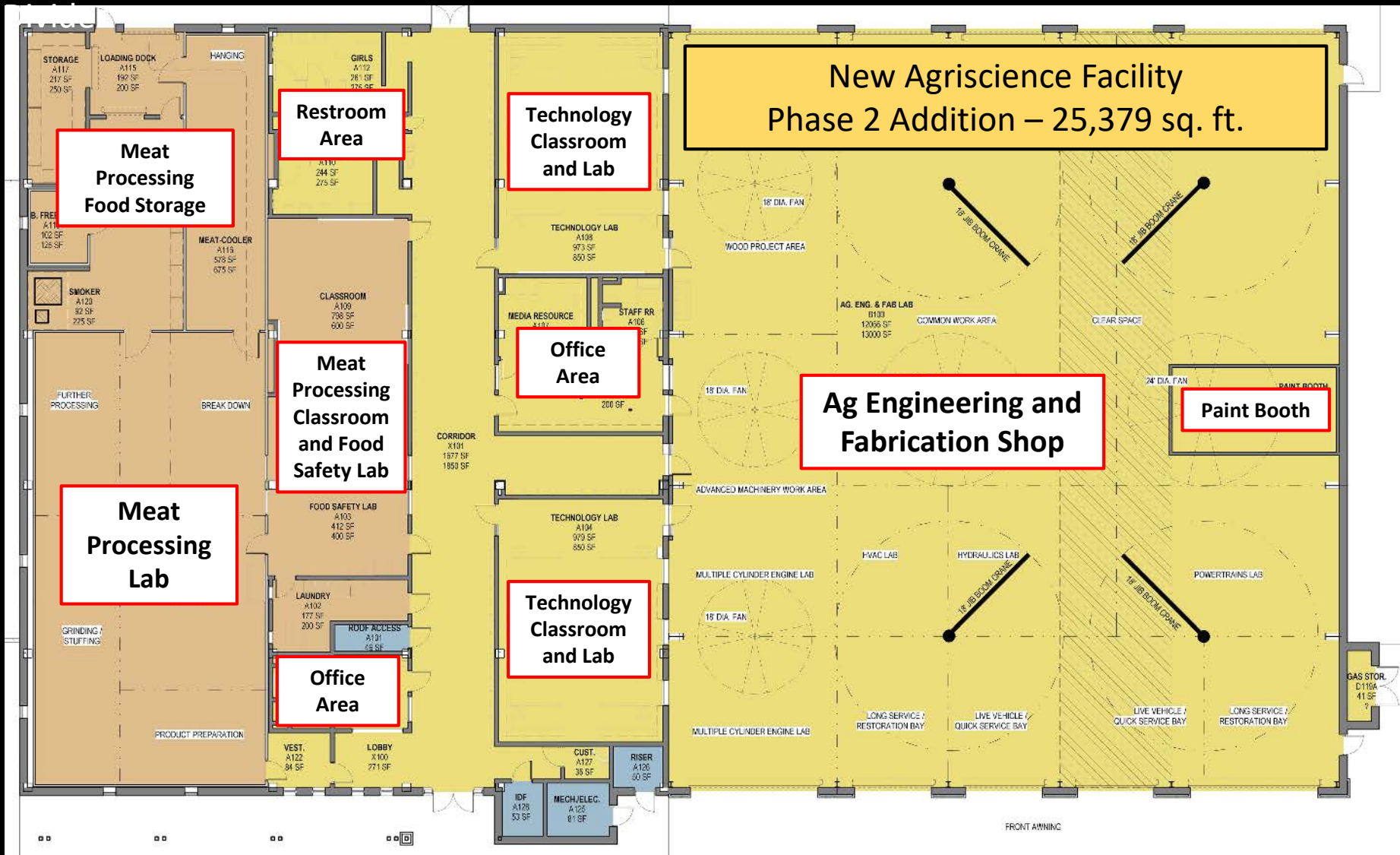




# North East Agriscience Phase 2 Project Site Analysis



# North East Agriscience Phase 2 Facility Addition Floor Plan





# North East Agriscience Phase 2 Facility Addition Elevations



SOUTH ELEVATION



NORTH ELEVATION

North East Agriscience Phase 2 Elevations

*North East Agriscience  
Madison HS*

# North East Agriscience Facility Phase 2 Elevations

---



WEST ELEVATION



EAST ELEVATION

# North East Agriscience Phase 2 Facility Addition Perspective

---



North East Agriscience Phase 2 Perspective

*North East Agriscience  
Madison HS*



# 2015 Bond Budget Review for North East Agriscience Phase 2 Facility Addition Project

---

• Design Account:	\$ 1,025,000
• Construction Account:	\$ 7,375,000
• Technology Account:	\$ 50,000
• FF&E Account:	<u>\$ 185,000</u>
TOTAL BOND PROGRAM =	\$ 8,635,000

# 2015 Bond Design and Construction Timeline



# North East Agriscience Phase 2 Facility Addition Project

## District Staff Recommendation

---

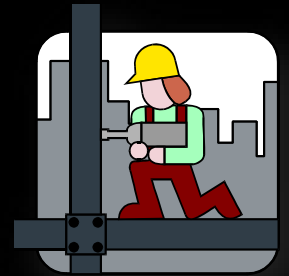
- Recommend Approval of the North East Agriscience Phase 2 Facility Addition Project Schematic Design Presentation which Constructs the following 2015 Bond-Approved Program Elements:

- Construct New Ag Engineering and Fabrication Shop
  - 2 Classrooms, 10 Lab Areas, Large Fabrication Shop, and Paint Booth
- Construct New Meat Processing Lab
  - Classroom, Food Safety Lab, Cutting Floor Area, Blast Freezer, Meat Smoker Area, Meat Cooler, Storage Area, Loading Dock, Locker Area, and Laundry Room
- Construct Site Improvements (Landscape, Irrigation, Drainage, Site Utilities, & Hardscape)
- Construction Budget = \$ 7,375,000





# 2015 Bond North East Agriscience Phase 2 Facility Addition Project Schematic Design Presentation



## Questions ?