

# **Churchill High School Fine Arts Addition Construction Document Presentation 2007 Bond Program**



**Garrett J. Sullivan, Executive Director  
Construction Management & Engineering Department**

**October 12, 2009**

# Churchill High School Fine Arts Addition & Renovation Aerial View

New Athletic Facility  
2007 Bond

Cafeteria, Science Classroom &  
Administration Addition  
2003 Bond

Library & Classroom Addition  
1998 Bond

Auditorium Renovation  
1995 Bond

Proposed Fine Arts  
Addition & Renovation Project  
2007 Bond

Blanco Road





# Churchill High School Fine Arts Addition & Renovation

## Aerial View – Scheduled Selective Demolition

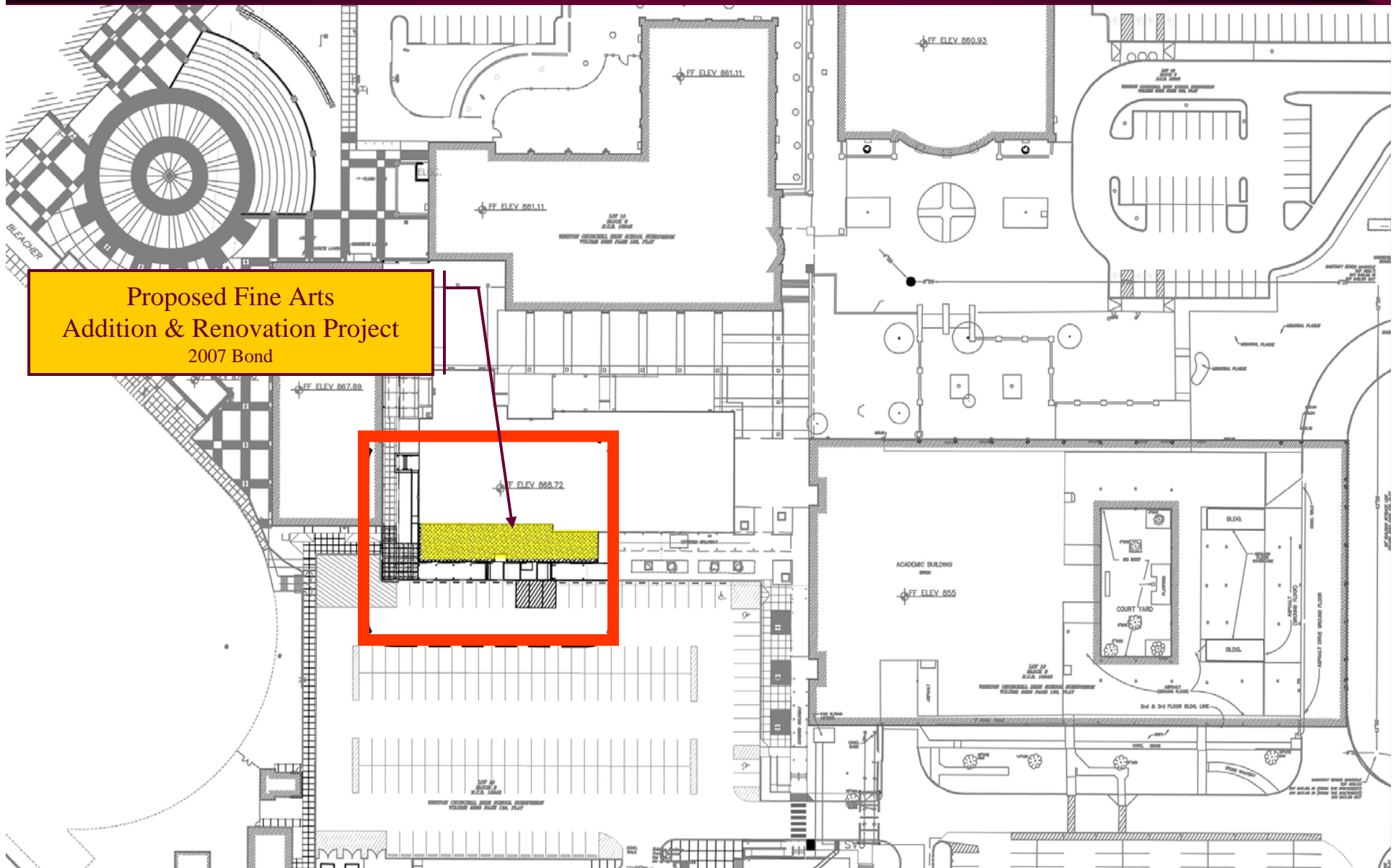


Existing Scene Shop and Storage  
Building

Existing Athletic Facility  
Schedule for Demolition  
2007 Bond



# Churchill High School Fine Arts Addition & Renovation Site Plan



# Existing Interior Spaces & Conditions



Girls Dressing Room



Boys Dressing Room



Prop Storage



Access Door to Scene Production /  
Prop Storage Building



# Existing Interior Spaces and Conditions



Prop Storage



Prop Storage



Scene Production Studio



Scene Production Studio

# Churchill High School Fine Arts Addition

## Scope of Work

---

- **Fine Arts Addition**

- Replace existing Scene Shop (locate adjacent to Back Stage Area)
- Replace existing Prop Storage Area (locate adjacent to Scene Shop)
- Relocate Existing Drama Classroom to better facilitate overall design layout for Building Addition
- Provide a Theater Arts Storage Library
- Renovate existing Boys and Girls Dressing Room / Storage Areas

Note: Existing Scene Shop and Prop Storage Areas are located in a building adjacent to the Gym Area scheduled for Demolition

Original Plan to relocate these functions to the old Churchill Cafeteria was evaluated but dismissed due to distance limitations from the Auditorium Area

# Existing Exterior Conditions



East View of Courtyard



North East View



North West View of Auditorium Bldg

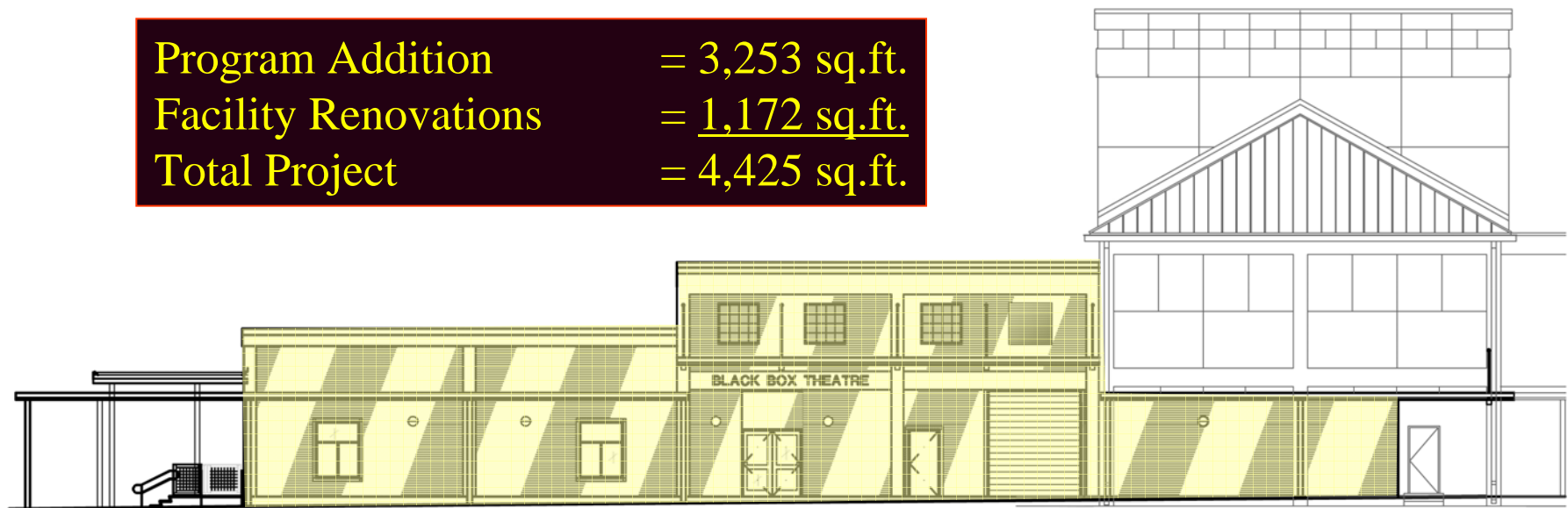


# Churchill High School Fine Arts Addition & Renovation

## Probable Construction Cost Estimate

Program Addition	3253	\$255.00	\$829,515.00
Facility Renovation	1172	\$167.00	\$195,485.00
Contingency			\$100,000.00
<b>Total Project</b>	<b>4425</b>		<b>\$1,125,000.00</b>

Program Addition = 3,253 sq.ft.  
 Facility Renovations = 1,172 sq.ft.  
 Total Project = 4,425 sq.ft.

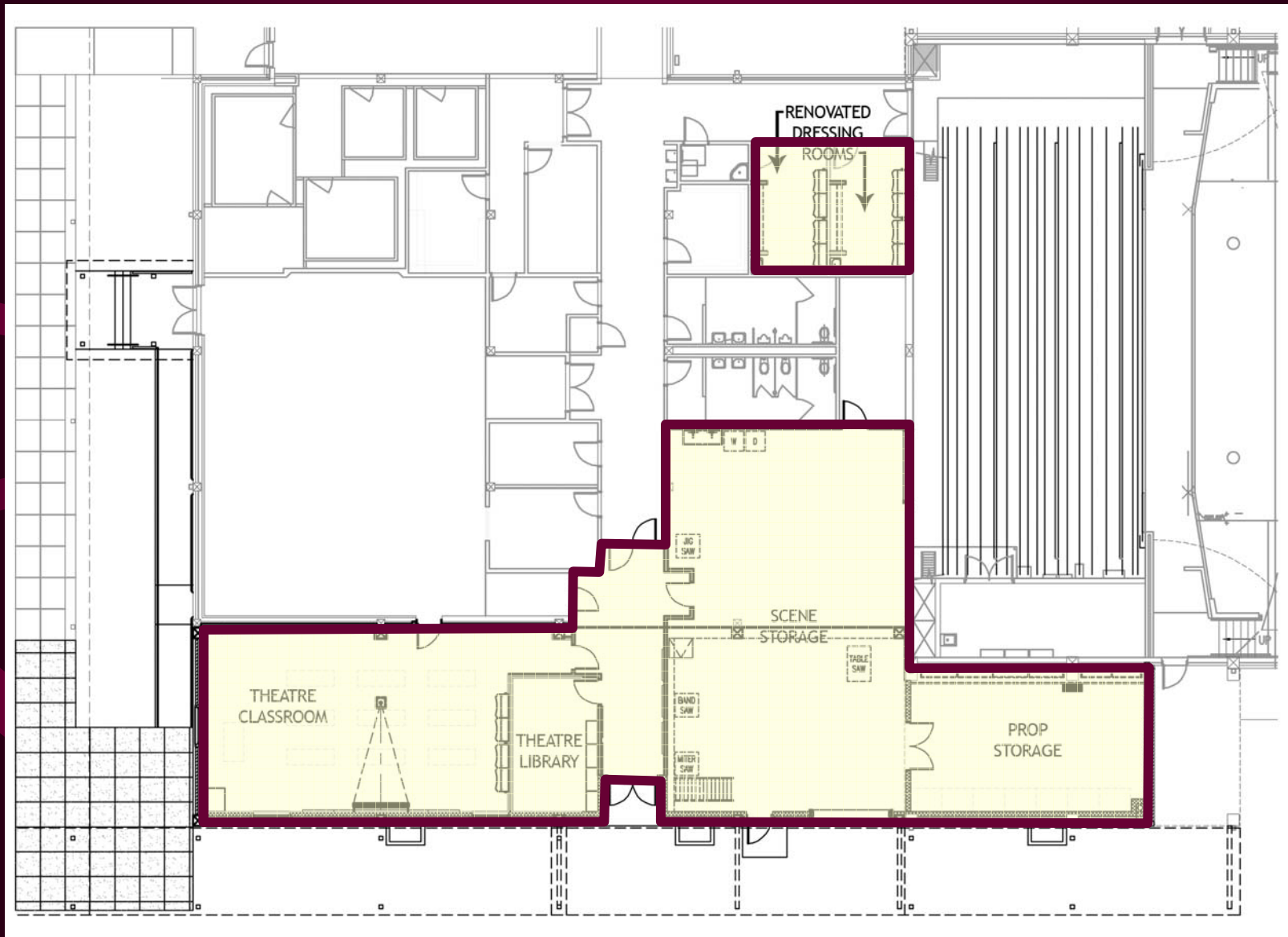


SOUTH ELEVATION

**New Fine Arts Addition and Renovation - Elevation**

# Churchill High School Fine Arts Addition & Renovation

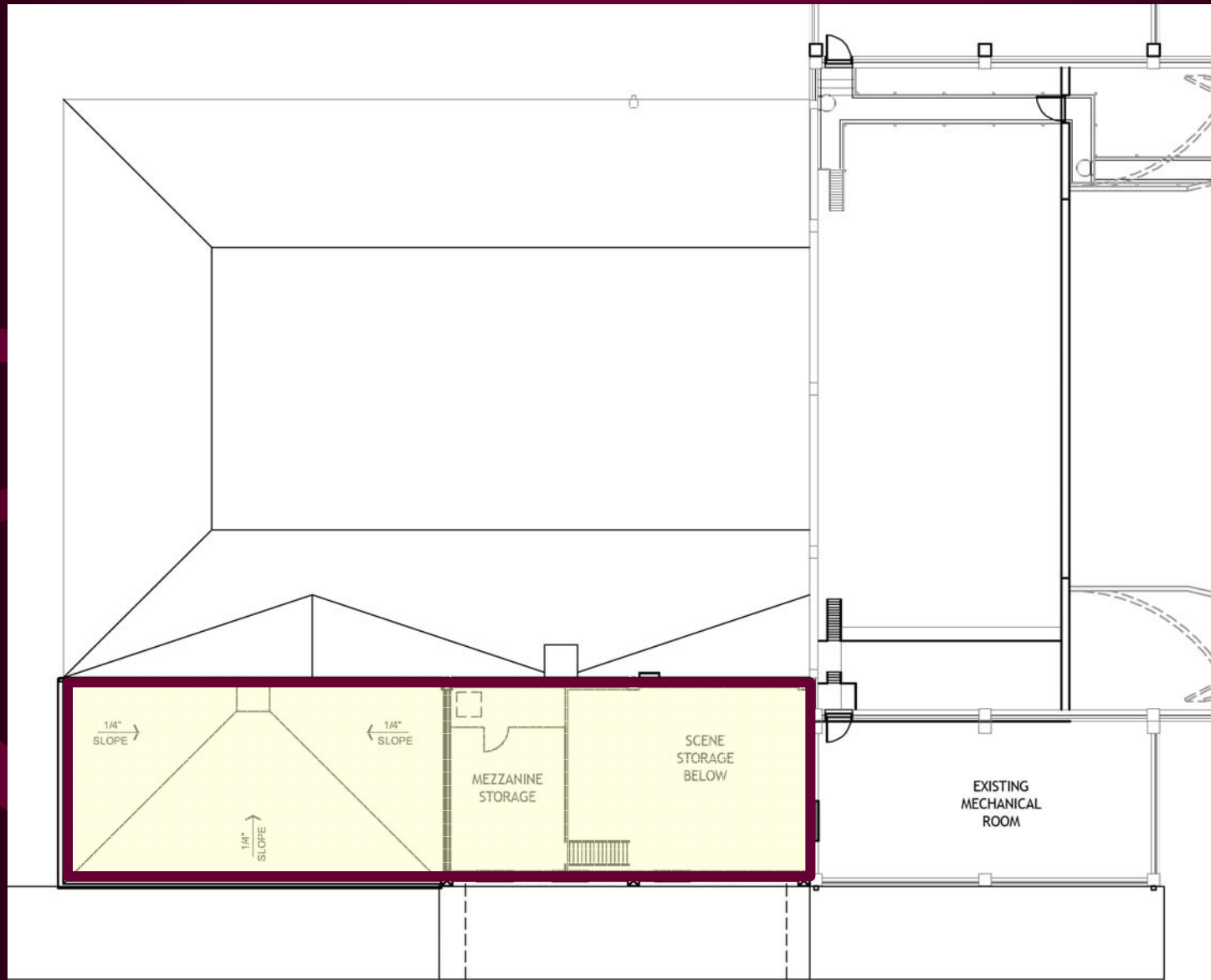
## 1<sup>st</sup> Floor Plan





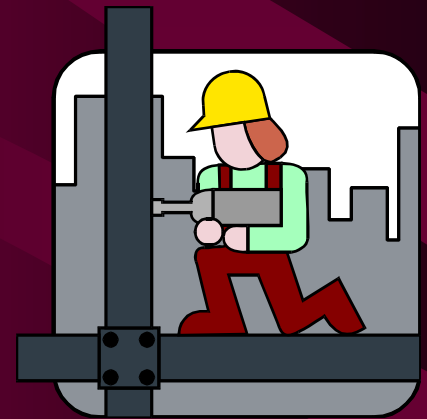
# Churchill High School Fine Arts Addition & Renovation

## 2<sup>nd</sup> Floor Plan



# Summary Presentation

## Churchill High School Fine Arts Addition 2007 Bond Program



Questions?