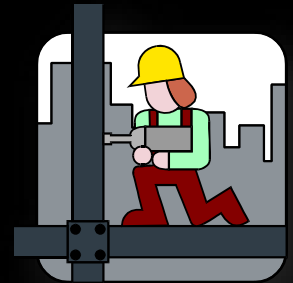




2015 Bond Colonial Hills Elementary School Kitchen Addition and Renovations Project Schematic Design Presentation



Garrett J. Sullivan, Executive Director
Construction Management and Engineering Department

August 14, 2017

- Project Design Team
- Program Review
- Project Site Analysis
- Concept Design Plans
- Budget Review
- Project Phasing Plan
- Schedule Review
- Staff Recommendation



Colonial Hills Elem. School Design & Construction Team

- Architect: Lopez Salas Architects
- General Contractor: Satterfield & Pontikes Construction
- MEP Engineer: ms2 Consulting Engineers
- Structural Engineer: Intelligent Engineering Services
- Civil Engineer: Intelligent Engineering Services
- Roofing Engineer: Wiss, Janey, Elstner & Associates
- Technology Engineer: Wrightson, Johnson, Haddon, & Williams
- Building Code Engineer: Protection Development, Inc.
- Landscape Architect: CFZ Group
- Acoustical Engineer: Wrightson, Johnson, Haddon, and Williams
- Geotechnical & Material Testing: Drash Consultants
- Test, Balance, and Commissioning: Alderson & Associates



Colonial Hills Elementary School Campus Site Aerial

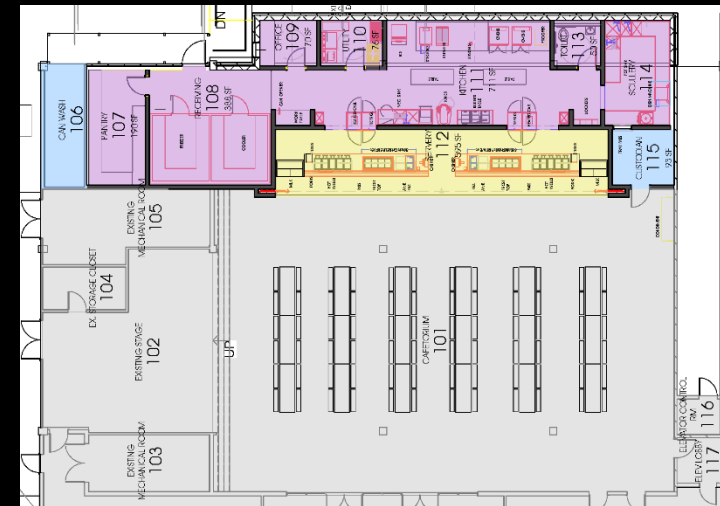
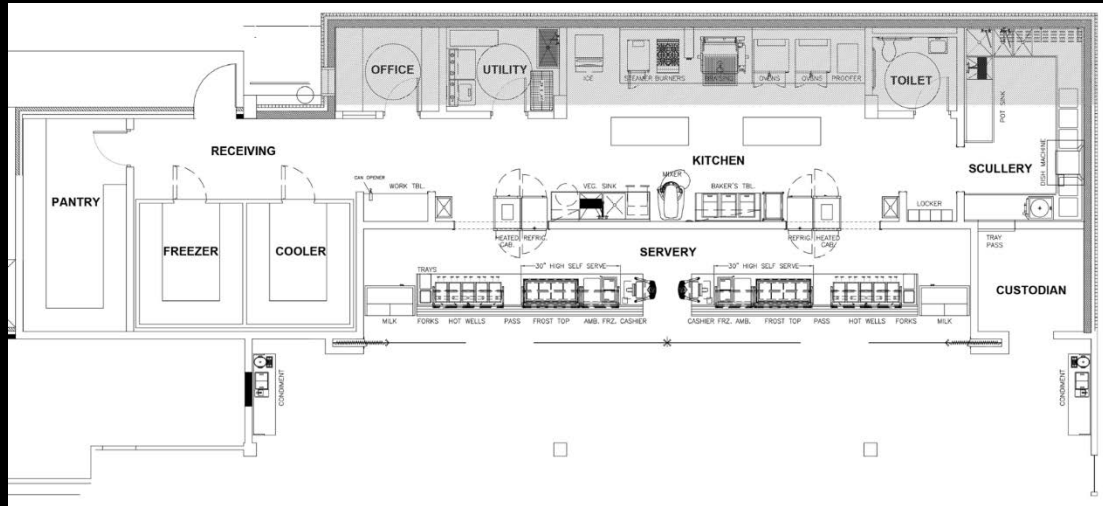


2015 Bond Program Review for Colonial Hills Elem. School Kitchen Addition and Renovations

- Expand the Colonial Hills Elem. School Kitchen Facility (571 sq. ft.)
- Renovate the Existing Kitchen Area and Blend with the Facility Expansion Providing a New Food Service Equipment Package (1,511 sq. ft.)
- Construct 2 Serving Lines for the Cafeteria Dining Area (595 sq. ft.)
- Reconfigure the Access Road to the Kitchen Loading Dock to Facilitate Deliveries by the Food Service Delivery Truck
- Construct Various Site Infrastructure Improvements to Support the Kitchen Expansion/Renovations (Landscape, Irrigation, Drainage, Site Utilities, and Hardscape)

2015 Bond Program Review for Colonial Hills Elem. School Kitchen Addition and Renovations

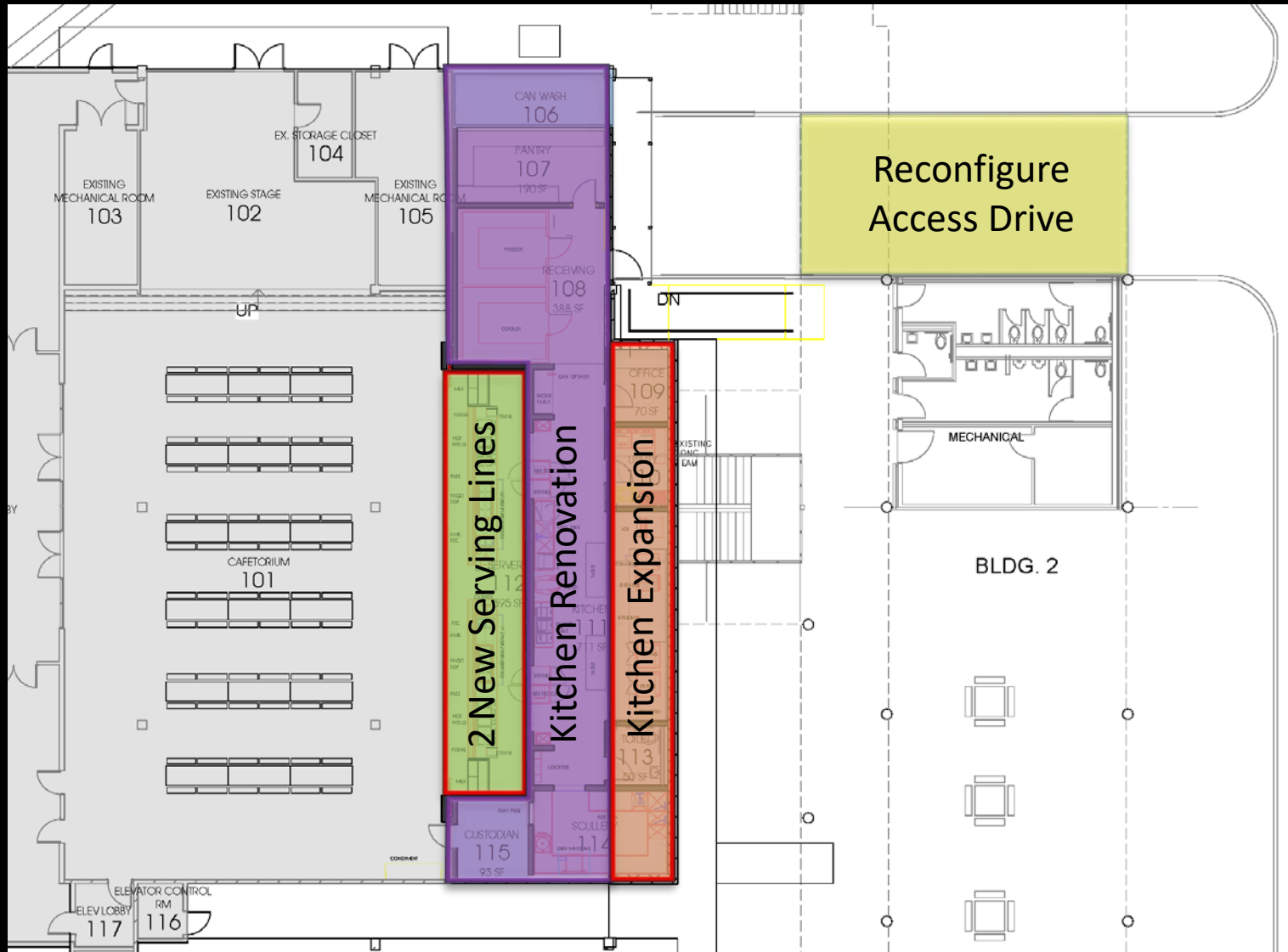
Elementary School Kitchen Facility		Number	Square Feet	Total S.F.	Scheme Total
1	Serving Areas (2 Serving Lines)	1	800	800	595
2	Kitchen/Food Prep Areas	1	950	950	711
3	Dishwashing	1	210	210	193
4	Custodial	1	50	50	93
5	Laundry	1	30	30	76
6	Pantry/Dry Storage	1	225	225	190
7	Walk-in Cooler/Freezer	1	190	190	388
8	Office	1	90	90	70
9	Staff Locker/Toilet Area	1	120	120	90
10	Inclusion of Interior & Exterior Walls				271
Elementary School Kitchen Program Subtotal (S.F.)=				2,665	2,677



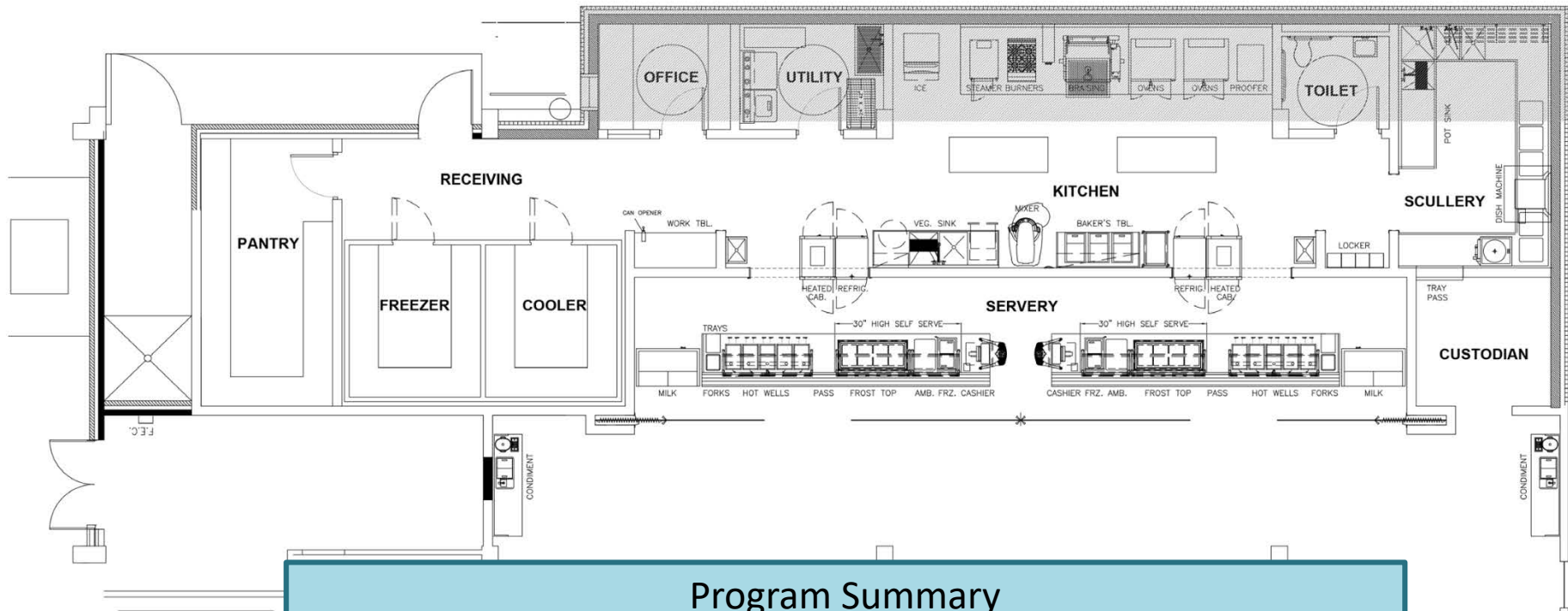
Colonial Hills Elem. School Project Site Analysis



Colonial Hills Elem. School Project Site Analysis



Colonial Hills Elem. School Project Site Analysis



Program Summary

New Addition = 571 sq. ft.

Kitchen Renovation = 1,511 sq. ft.

Serving Lines Area = 595 sq. ft.

Total Kitchen/Serving Line Addition & Renovations = 2,677 sq. ft.

Colonial Hills Elem. School Project Perspective



Colonial Hills ES Kitchen Addition & Renovations Project Perspective

*Colonial Hills ES
North East ISD*

2015 Bond Budget Review for Colonial Hills Elem. School Kitchen Addition and Renovations

• Design Account:	\$ 535,000
• Construction Account:	\$ 2,275,000
• Technology Account:	\$ 5,000
• FF&E Account:	<u>\$ 10,000</u>
TOTAL BOND PROGRAM =	\$ 2,825,000

2015 Bond Design and Construction Timeline

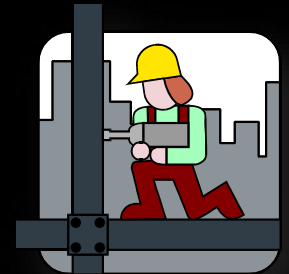


2015 Bond Colonial Hills Elem. School Kitchen Addition and Renovations Project - District Staff Recommendation

- Recommend Approval of the Colonial Hills Elementary School Kitchen Addition and Renovations Project Schematic Design Presentation which Constructs the following 2015 Bond-Approved Program Elements:
 - Expand the Campus Kitchen Facility (571 sq. ft.)
 - Renovate the Existing Kitchen Area and Blend with the Facility Expansion Providing a New Food Service Equipment Package (1,511 sq. ft.)
 - Construct 2 Serving Lines for the Cafeteria Dining Area (595 sq. ft.)
 - Reconfigure the Access Road to the Kitchen Loading Dock to Facilitate Deliveries by the Food Service Delivery Truck
 - Construct Various Site Improvements to Support the Kitchen Expansion/Renovations (Landscape, Irrigation, Drainage, Site Utilities, and Hardscape)
 - Construction Budget = \$ 2,275,000
- Approve use of the Job Order Contract Bid/Construction Delivery Method and Appoint Satterfield & Pontikes Construction as Designated General Contractor



2015 Bond Colonial Hills Elementary School Kitchen Addition and Renovations Project Schematic Design Presentation



Questions ?