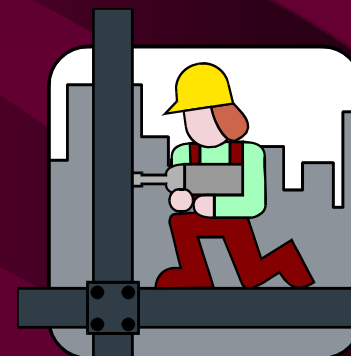
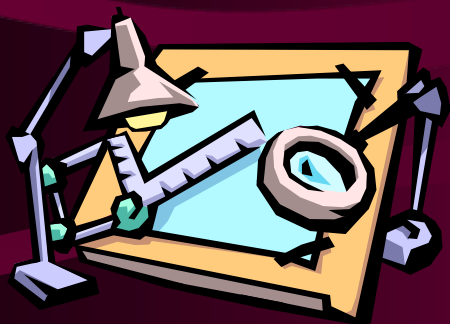


Claudia Taylor (Lady Bird)

Johnson High School

Package B: Facilities / Athletic Fields and Site Infrastructure

Bid Award Presentation - 2003 Bond Program



**Garrett J. Sullivan, Executive Director
Construction Management & Engineering Department**

March 20, 2005

CTJ High School – Program Analysis

- Construct New Academic/Support Facilities/Athletic Fields/ Parking/Roads and Infrastructure for a New High School including the following Program Areas:
 - Administrative Area with Student Health Clinic and Campus Support Areas
 - Art Program (3 Classroom Areas)
 - Athletics and Physical Education Program (2 Gymnasiums & Support Areas)
 - Career and Technology Program (19 Classroom Areas)
 - Computer Science Program (1 Classroom Area)
 - Dance/PEP/Cheerleader (1 Classroom Area)
 - Drivers Education Program (1 Classroom Area)
 - Food Service Program (Kitchen – Cafeteria – Outdoor Dining Area)
 - General Instructional and Language Arts (60 Classroom Areas)
 - Library / Media Center
 - Multi-Use Production Studio (2 Classroom Areas)
 - Music Program: Band – Orchestra – Choir (3 Classroom Areas)
 - Photojournalism (1 Classroom Area)
 - Science (20 Classrooms): 14 Full Labs / 2 Modified Labs / 4 Classrooms
 - JROTC (3 Classroom Areas)
 - Special Education (16 Classroom Areas)
 - Speech (2 Classroom Areas)
 - Theater Arts (1 Classroom with Auditorium and Black Box Theater)

CTJ High School – Variance Analysis

- Construct New Academic/Support Facilities/Athletic Fields/Parking/Roads and Infrastructure for a New High School including the following Program Areas:
 - Career and Technology Program (+1 Classroom Area)
 - Added Business Administration Systems Lab
 - Added H.E.C.P Classroom (Career Prep)
 - Deleted 1 Technology Education Lab
 - Special Education Program (-1 Classroom Area)
 - Deleted Hearing Impaired Classroom
 - Science Program (+ 2 Labs)
 - Added 2 Science Labs to Program adjacent to 4 Adjoining Classrooms
 - Program Area Increase by 43,726 sq. ft.
 - Program = 395,000 sq. ft. Design ~ 438,726 sq. ft.

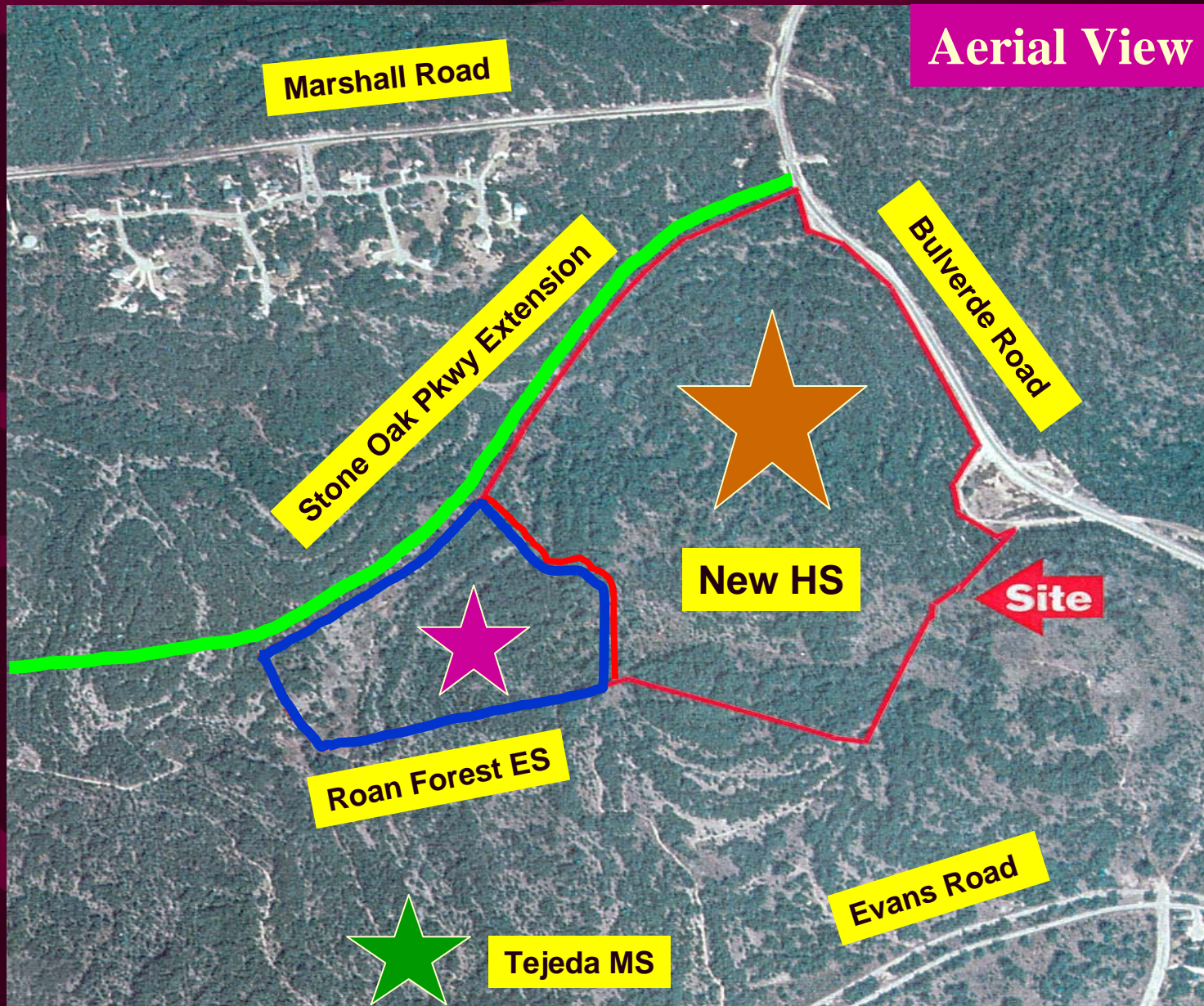
CTJ High School Design Program Summary

PROGRAM AREA	Program (SF)	Design (SF)	Delta	% Change
Administrative Student Services / Campus Support & Clinic	17,100	17,648	+ 548	+ 3.2%
Administrative Student Services	9,730	11,408	+ 1,678	---
Campus Support & Teacher Resource Areas	5,800	4,844	- 956	---
Student Health Center	1,570	1,396	- 174	---
Standard Instructional Program	90,314	93,984	+ 3,670	+ 4.1%
General Instructional Program (60 Classrooms & 4 Labs)	52,004	52,710	+ 706	---
Science Program (16 Science Labs)	29,500	32,150	+ 2,650	---
Computer Science Program	1,040	1,100	+ 60	---
JROTC Program	6,970	7,191	+ 221	---
Drivers Education Program	800	833	+ 33	---
Special Education Program	12,850	12,673	- 177	- 1.4%
Career and Technology Program	24,425	25,778	+ 1,353	+ 5.5%
Library and Multi-Use Production Studio	12,900	13,272	+ 372	+ 2.9%

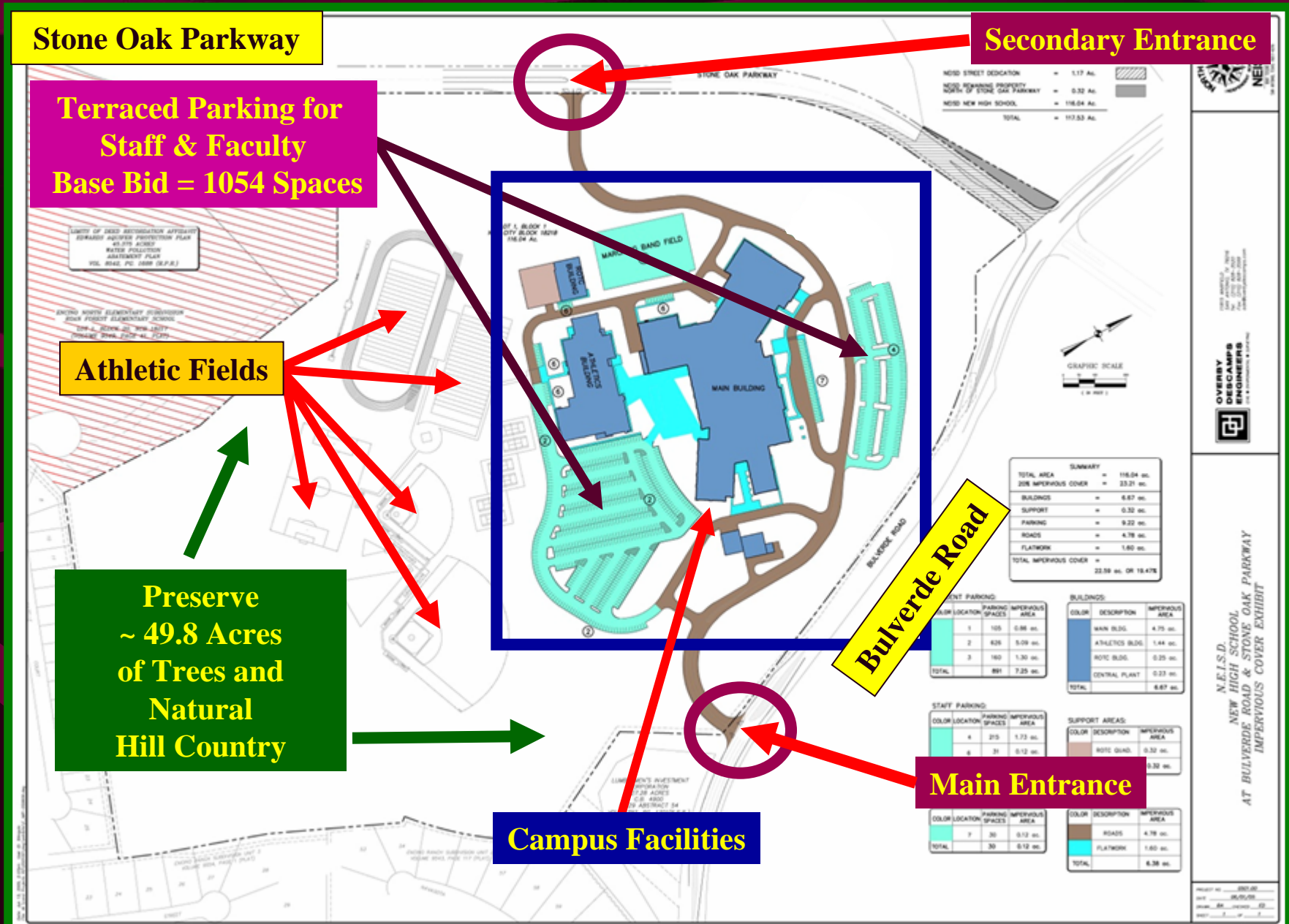
CTJ High School Design Program Summary

PROGRAM AREA	Program (SF)	Design (SF)	Delta	% Change
Fine Arts Program	48,715	49,985	+ 1,270	+ 2.6%
Art / Photo-Journalism / Speech	10,055	10,660	+ 605	---
Music (Band – Orchestra – Choir)	12,790	13,968	+ 1,178	---
Theater Arts (Auditorium and Black Box)	21,570	20,767	- 803	---
Dance / Pep Squad / Cheerleader	4,300	4,590	+ 290	---
Athletics and Physical Education Program	41,955	44,957	+ 3,002	+ 7.2%
Athletics and Physical Education	12,865	13,469	+ 604	---
Gymnasiums and Athletic / P.E. Support Facilities	29,090	31,488	+ 2,398	---
Food Service Program (Cafeteria and Kitchen)	19,050	19,780	+ 730	+ 3.8%
MEP Support Areas / Restrooms / Circulation / Structure	127,691	160,649	+ 32,958	+ 25.8%
MEP Support Areas and Restrooms	41,768	45,878	+4,110	---
Circulation Areas and Building Structure	85,923	109,925	+ 24,002	---
Net to Gross Sq. Footage Added thru Program Growth	0	4,846	+ 4,846	---
TOTAL	395,000	438,726	+ 43,726	+ 11.1%

CTJ High School Site Location

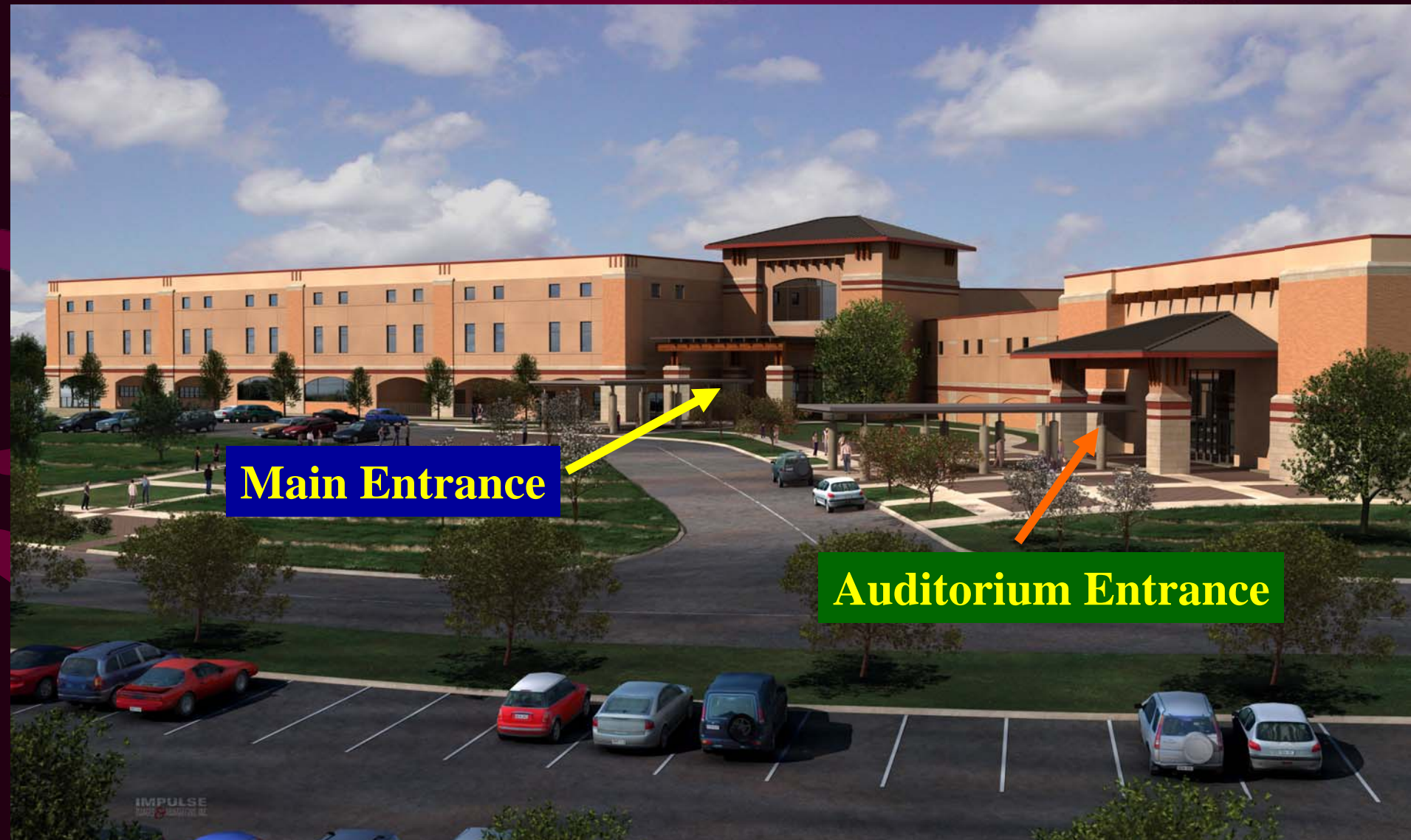


2003 Bond – CTJ High School – Final Site Plan



Claudia Taylor (Lady Bird) Johnson High School

Front Elevation Schematic Rendering



Claudia Taylor (Lady Bird) Johnson High School Schematic Sections



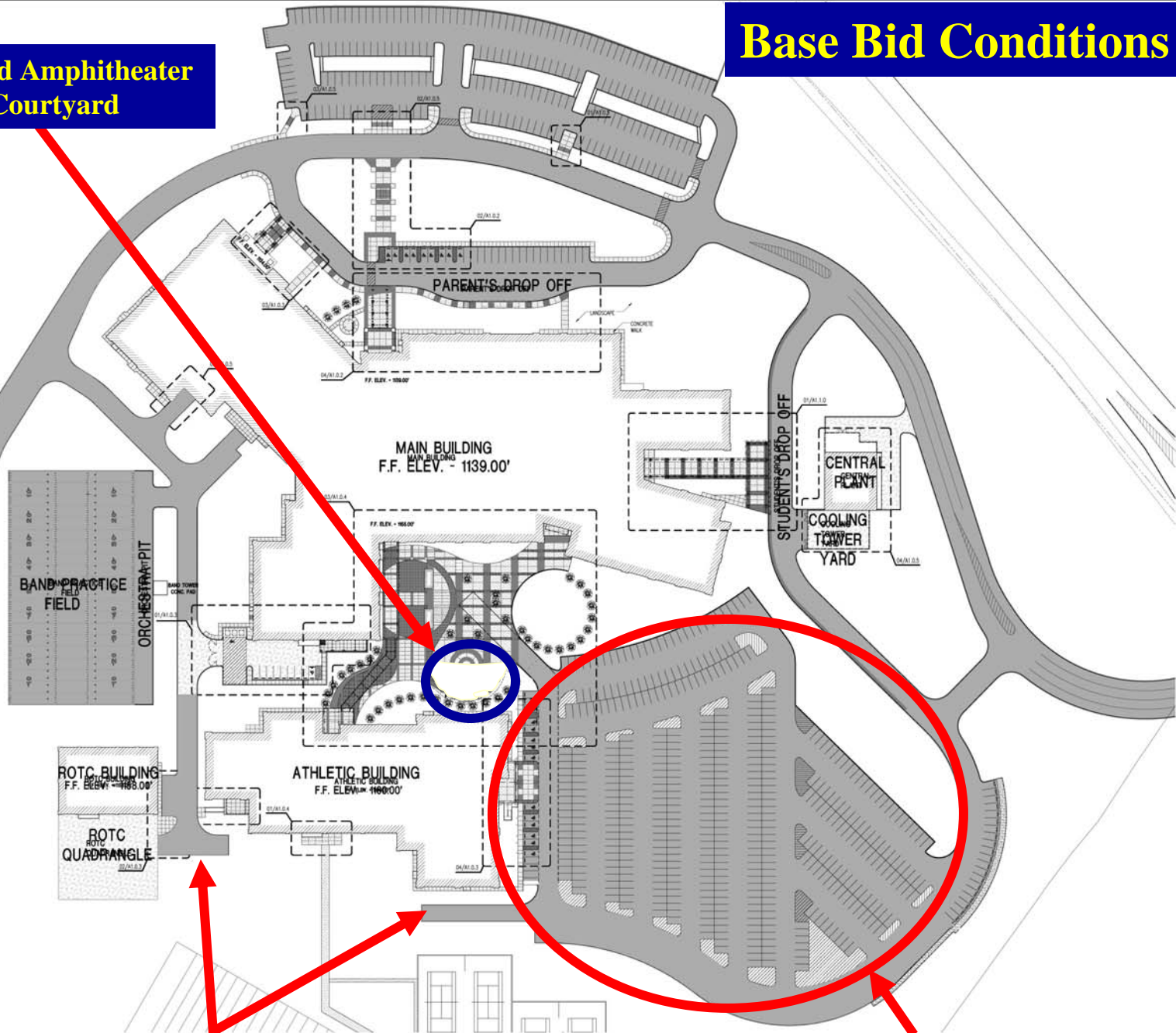
North-South Corridor



East-West Corridor

Base Bid Conditions

Eliminated Amphitheater
at Courtyard



Eliminated Connecting Loop Drive

Provided Striped Islands at the Student Parking Lot

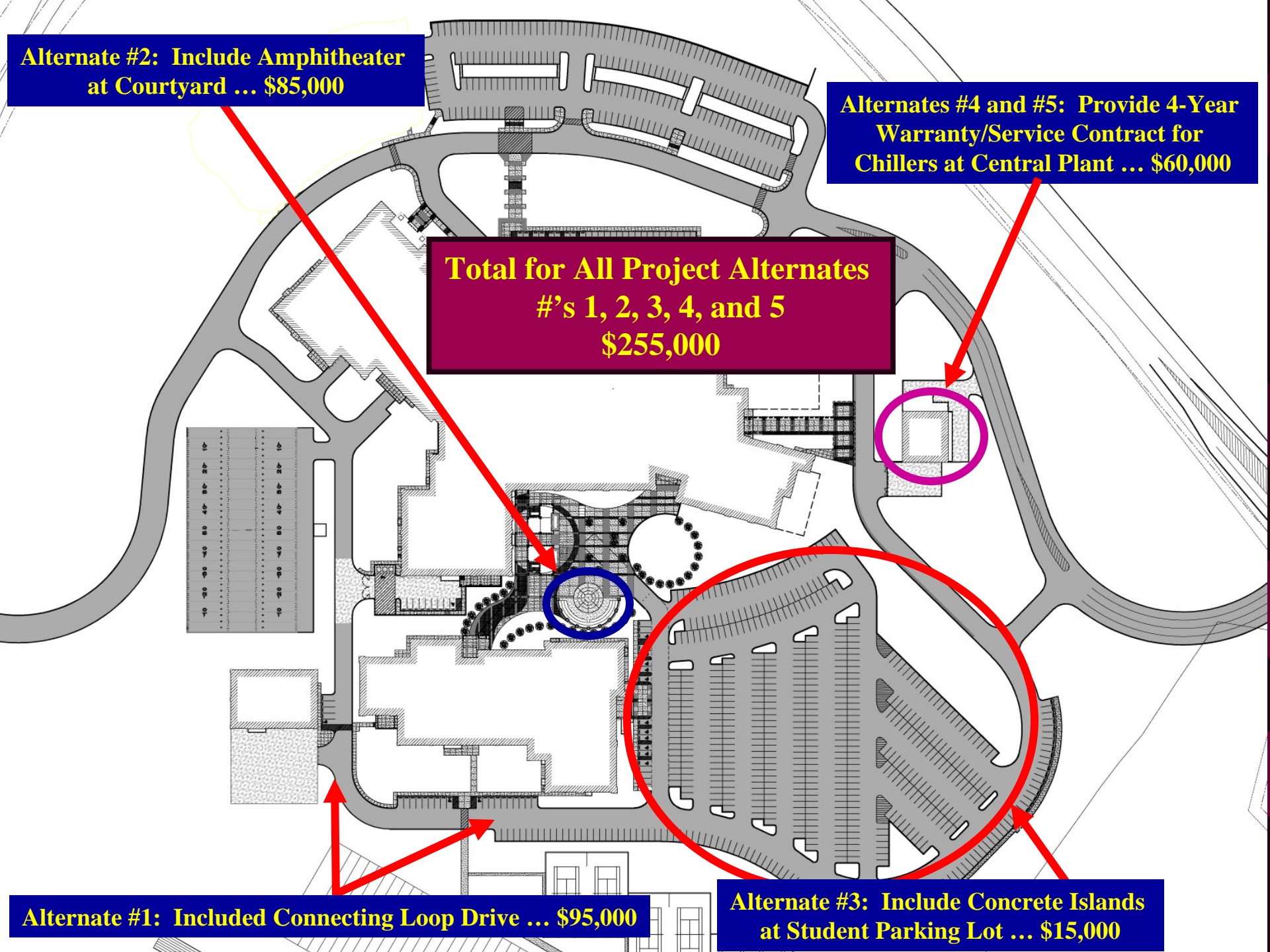
**Alternate #2: Include Amphitheater
at Courtyard ... \$85,000**

**Alternates #4 and #5: Provide 4-Year
Warranty/Service Contract for
Chillers at Central Plant ... \$60,000**

**Total for All Project Alternates
#s 1, 2, 3, 4, and 5
\$255,000**

Alternate #1: Included Connecting Loop Drive ... \$95,000

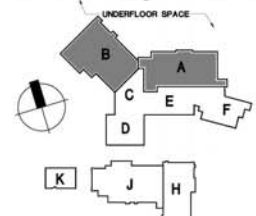
**Alternate #3: Include Concrete Islands
at Student Parking Lot ... \$15,000**

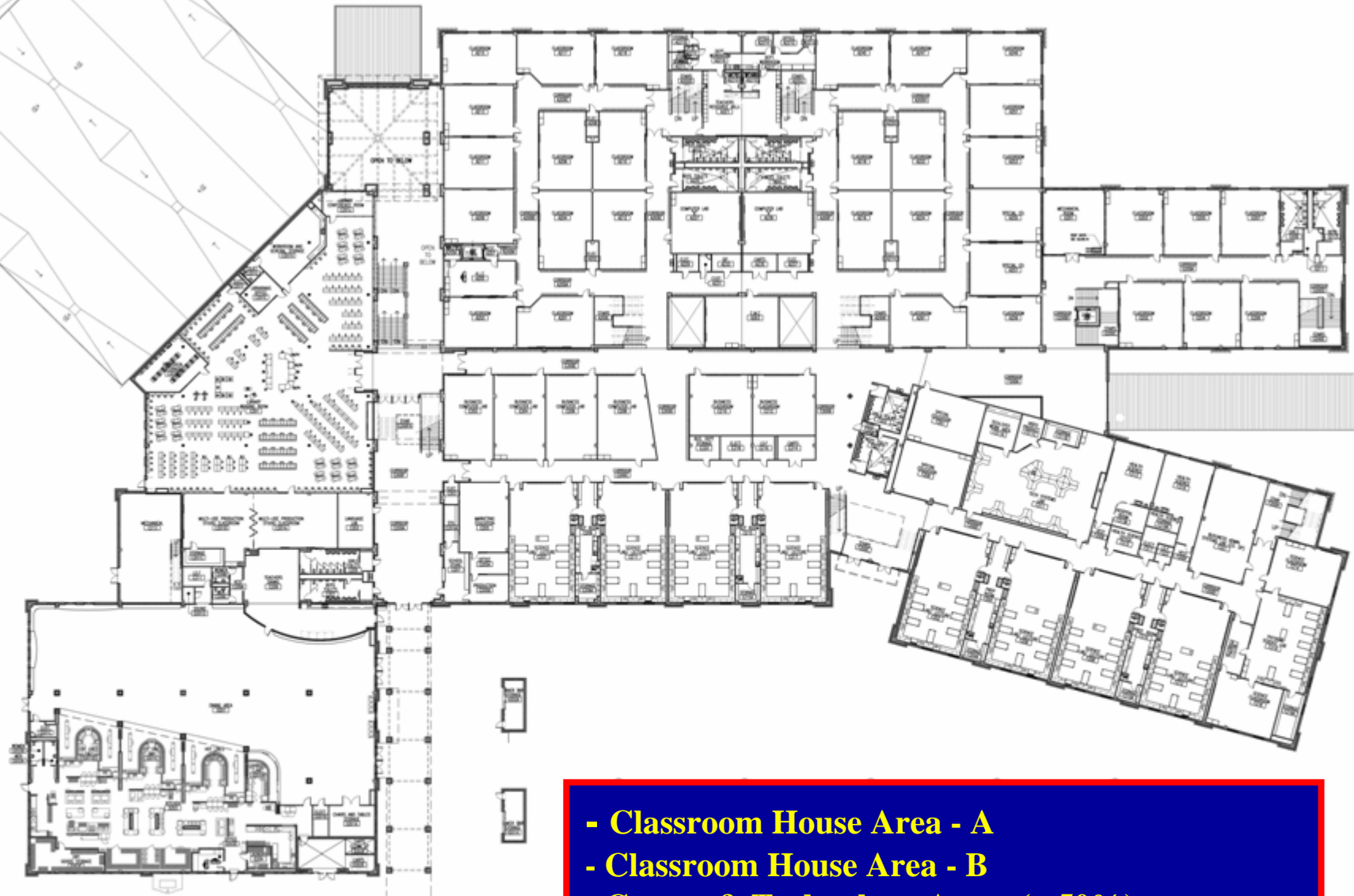


Main Academic Building 1st Floor Plan

02 PARTIAL FLOOR PLAN - LEVEL 1
AREA "A"
SCALE: 1/16" = 1'-0"

- Administrative Student Service
- Career and Counseling
- Clinic
- Auditorium and Fine Arts Areas
- Main Special Education Areas





Main Academic Building 2nd Floor Plan

- Classroom House Area - A
- Classroom House Area - B
- Career & Technology Areas (~ 50%)
- Science Areas (9 of 16 Labs)
- Special Education Areas Integrated with Houses
- Library and Multi-Use Production Classrooms
- Kitchen and Cafeteria



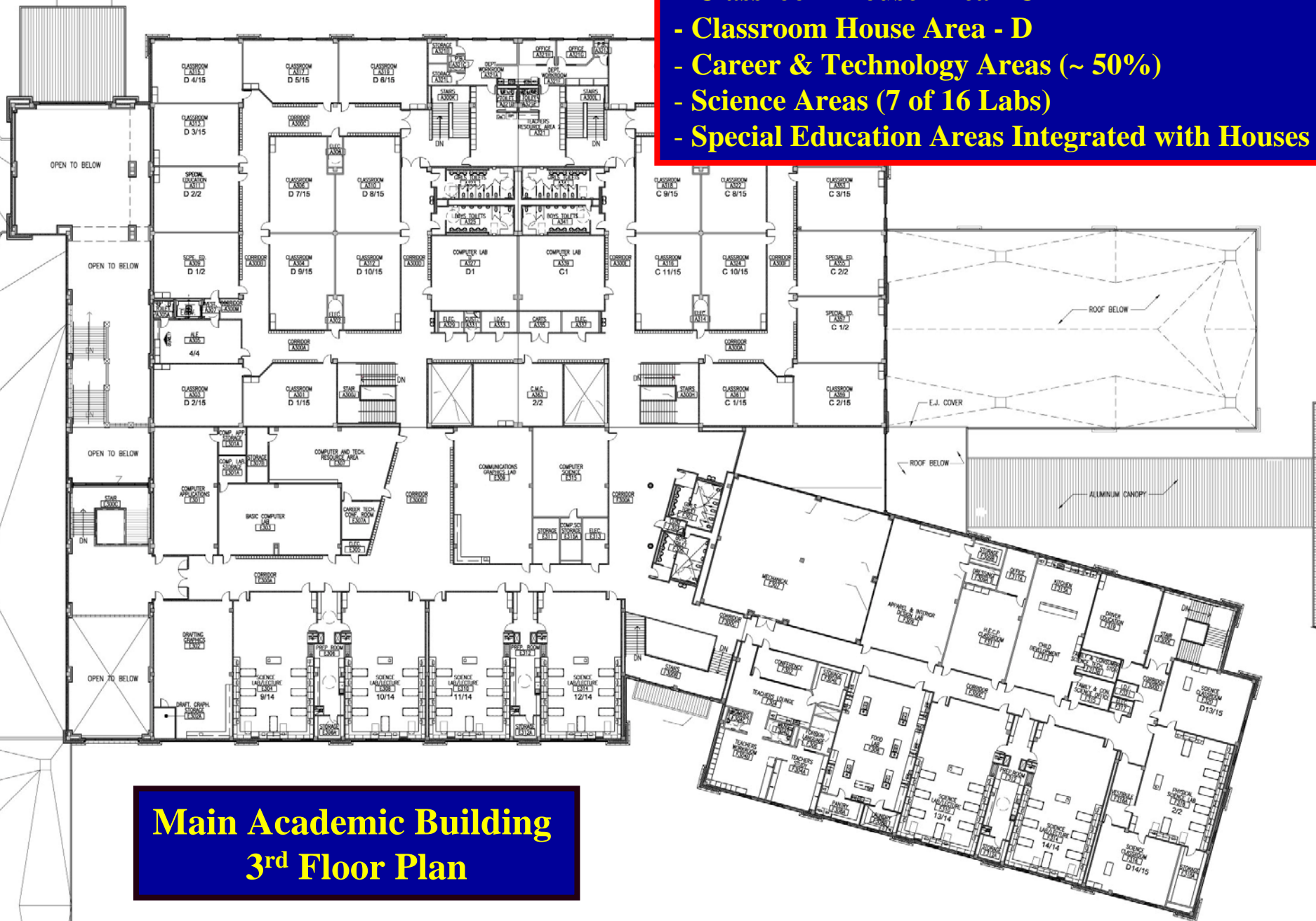
01

OVERALL FLOOR PLAN - LEVEL 2
AREAS A, C, D, E AND F



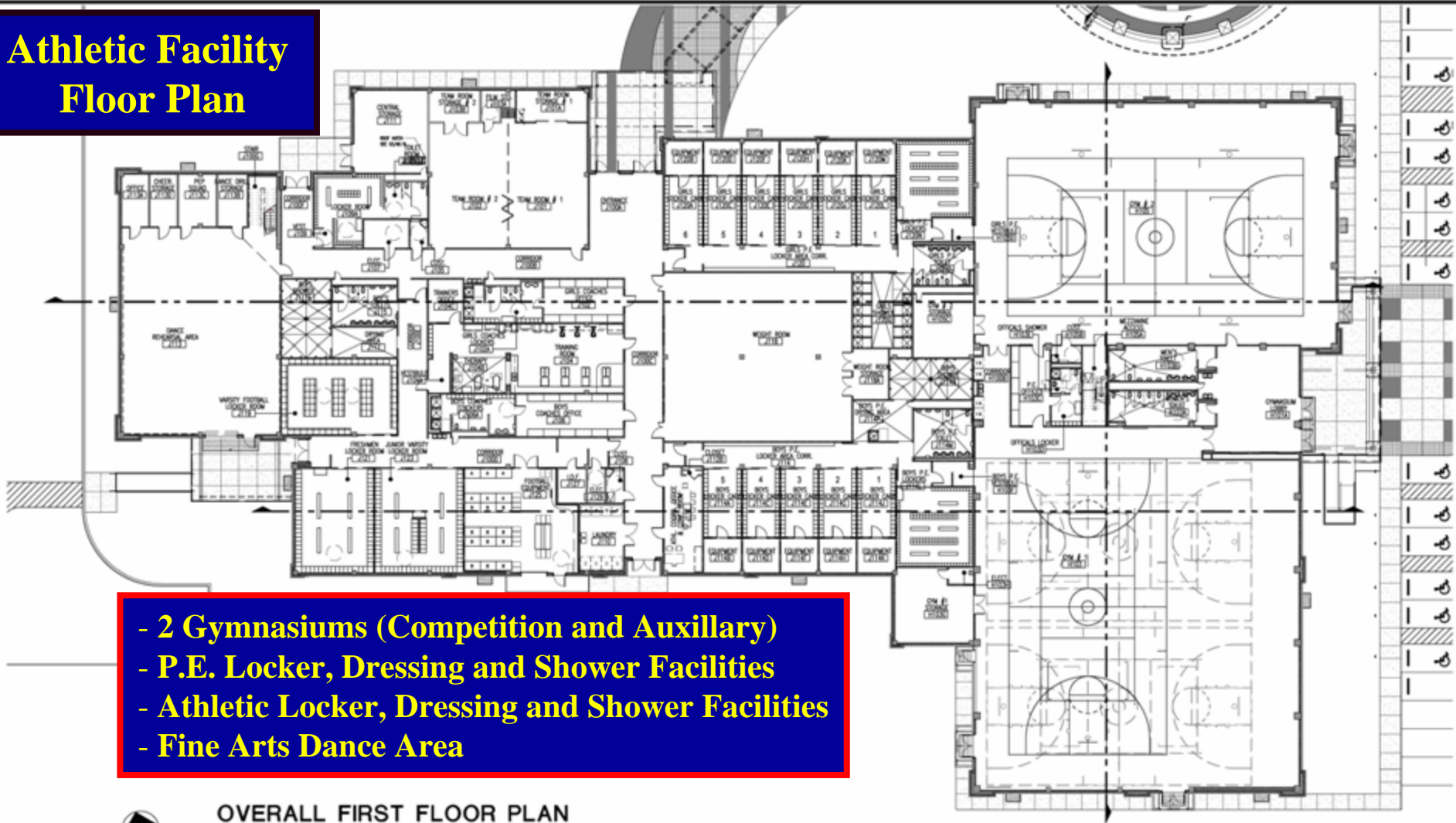
02

- Classroom House Area - C
- Classroom House Area - D
- Career & Technology Areas (~ 50%)
- Science Areas (7 of 16 Labs)
- Special Education Areas Integrated with Houses



**Main Academic Building
3rd Floor Plan**

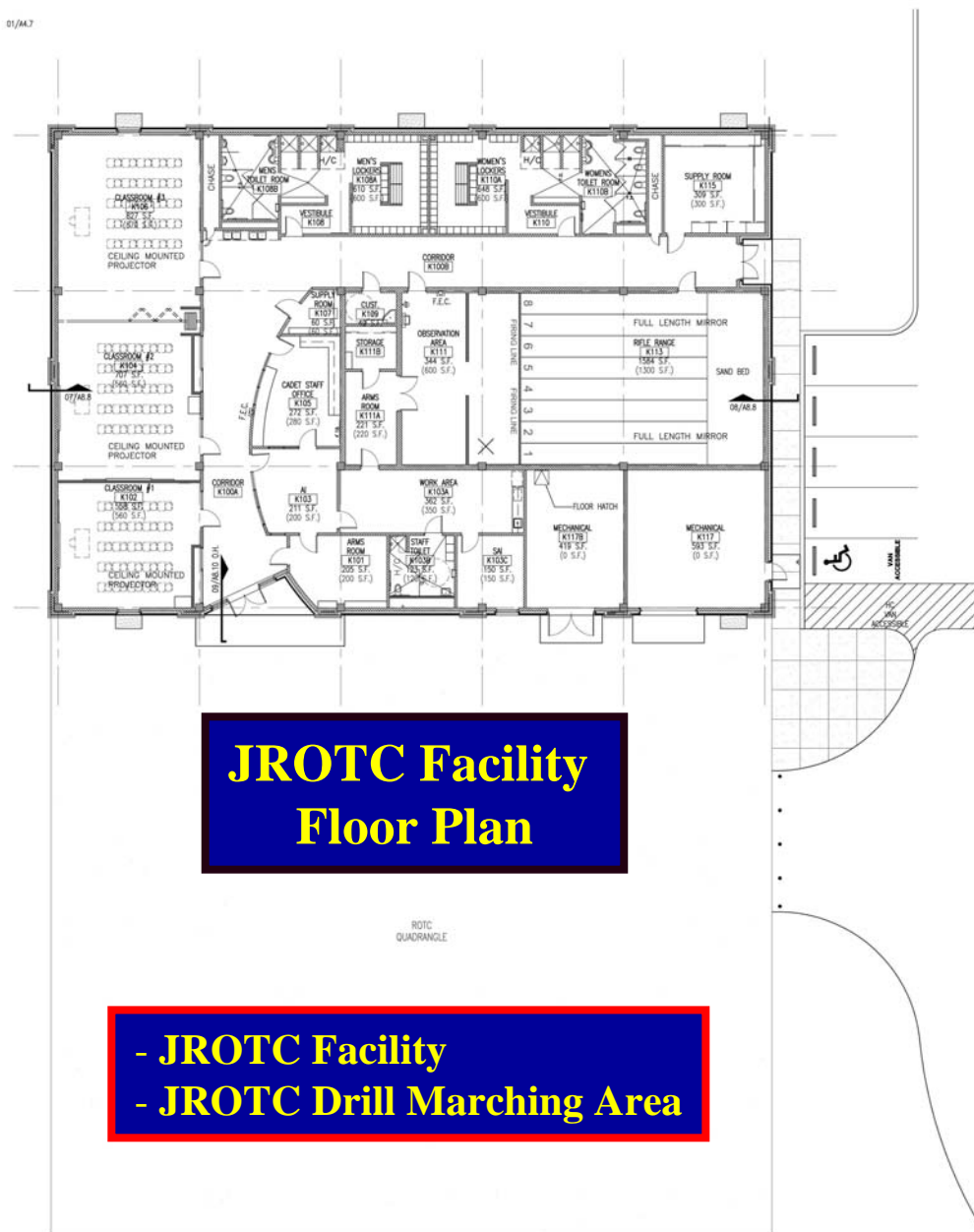
Athletic Facility Floor Plan



- 2 Gymnasiums (Competition and Auxillary)
- P.E. Locker, Dressing and Shower Facilities
- Athletic Locker, Dressing and Shower Facilities
- Fine Arts Dance Area



OVERALL FIRST FLOOR PLAN
ATHLETIC BUILDING (AREAS J AND H)
SCALE : 1/16" = 1'-0"



01

OVERALL FLOOR PLAN
R.O.T.C. (AREA K)

SCALE: 1/8" = 1'-0"

Executive Budget Summary

Construction Account:	\$ 57,198,695.00
Design Account:	\$ 4,558,077.00
Technology Account:	\$ 2,771,266.00
FF&E Account (1):	\$ 2,842,484.00
Library Books	\$ 827,860.00
CM Services:	\$ 1,446,332.00
ROCIP Contingency (2):	<u>\$ 1,565,286.00</u>
Grand Total:	\$ 71,210,000.00

Note 1 – FF&E: Furniture, Fixtures and Equipment

Note 2 – ROCIP: Rolling Owner Controlled Insurance Program

Project Budget / Bid Summary

Project Bid Package	Construction Budget Estimate	Project Bid Cost
Package A – Site Mass Grading & Preparation	\$3,565,000	\$3,739,300
Package B – Facilities / Athletic Fields and Site Infrastructure	\$52,528,155	\$67,815,776
Package C – Off-site Road Improvements (Development Agreements)	\$1,105,540	\$1,400,000
TOTAL =	\$57,198,695	\$72,955,076
Cost Per SF (based on 395,000 and 438,726 sq. ft.) =	\$144.81	\$166.29

Package B – Bid Tab Executive Summary

General Contractors	Recommendation	Gilbane Building Company	Joeris-Bartlett Cocke L.P. Joint Venture
Base Bid	Accepted	\$ 68,215,000.00	\$ 71,311,000.00
Alternate #1 (Loop Drive)	Accepted	\$ 95,000.00	\$ 92,000.00
Alternate #2 (Amphitheater)	Accepted	\$ 85,000.00	\$ 122,000.00
Alternate #3 (Concrete Islands)	Accepted	\$ 15,000.00	\$ 26,000.00
Alternate #4 (WC Chiller Warranty)	Accepted	\$ 40,000.00	\$ -
Alternate #5 (AC Chiller Warranty)	Accepted	\$ 20,000.00	\$ -
Total for Alternates	#'s 1,2,3,4 and 5	\$ 255,000.00	\$ 240,000.00
Base Bid & Alternates	Accepted	\$ 68,470,000.00	\$ 71,551,000.00
Value Engineering	Accepted - 23 Items	\$ (697,574.00)	N/A
Post Bid Addendum	Accepted - 8 Items	\$ 43,350.00	N/A
Total Contract Award for Package B	Accepted	\$ 67,815,776.00	

Package B – Bid Tab Unit Price Summary

Unit Price Description		Gilbane Building Co.	Joeris-Bartlett Cocke J.V.
Unit Price #1: Piers of Greater Depth (\$/LF) - Expanded from Bid		Unit Price of \$180.00/LF Voided	\$ 187.00
18" Diameter Shaft	Adjusted Contract Unit Price	\$ 47.00	N/A
24" Diameter Shaft	Adjusted Contract Unit Price	\$ 68.00	N/A
36" Diameter Shaft	Adjusted Contract Unit Price	\$ 110.00	N/A
42" Diameter Shaft	Adjusted Contract Unit Price	\$ 138.00	N/A
48" Diameter Shaft	Adjusted Contract Unit Price	\$ 170.00	N/A
Unit Price #2: Piers of Lesser Depth (\$/LF) - Expanded from Bid		Unit Price of \$9.00/LF Voided	\$ 19.00
18" Diameter Shaft	Adjusted Contract Unit Price	\$ 13.80	N/A
24" Diameter Shaft:	Adjusted Contract Unit Price	\$ 17.20	N/A
36" Diameter Shaft:	Adjusted Contract Unit Price	\$ 27.20	N/A
42" Diameter Shaft:	Adjusted Contract Unit Price	\$ 33.60	N/A
48" Diameter Shaft:	Adjusted Contract Unit Price	\$ 41.20	N/A
Unit Price #3: Temporary Casings (\$/LF) - Expanded from Bid		Unit Price of \$115.00/LF Voided	\$ 75.00
18" Diameter Shaft	Adjusted Contract Unit Prices for Temporary Casings do not include the cost associated with leaving or abandoning the steel casing shafts	\$ 42.00	Temporary Casing Prices are to bearing stratum only. Any cost for casing into stratum, sensitive features or voids shall be deducted from Allowance #4
24" Diameter Shaft:		\$ 58.00	
36" Diameter Shaft:		\$ 74.00	
42" Diameter Shaft:		\$ 85.70	
48" Diameter Shaft:		\$ 103.00	
Unit Price #4: Fill Sensitive Features (In-Place) with Gravel (\$/CY)		\$ 40.00	\$ 30.00
Unit Price #5: Cap Sensitive Features (In-Place) with Concrete (\$/CY)		\$ 120.00	\$ 85.00

Package B – Gilbane Bid Summary

Budget/Construction Element	Cost (\$)	Description
Base Bid Contract Price	\$ 68,215,000	Gilbane Building Company
Construction Alternates	\$ 255,000	Alternates 1, 2, 3, 4 and 5
Value Engineering	(\$ 697,574)	See Exhibit A (23 Items Approved)
Post Bid Addendum	\$ 43,350	See Exhibit A (8 Items Approved) (11 Items Pending)
Revised Contract Price	\$ 67,815,776	Contract Award Amount

Timeline

Package A: Site work

- *Conceptual Design Approval – 9 August 2004*
- *Schematic Design Approval – 13 September 2004*
- *Design/Construction Documents – 14 September 04 thru 13 June 05*
- *Bidding Period (RFCSP) – 14 June through 4 August 2005*
- *Bid Opening – 4 August 2005*
- *Contract Award – 22 August 2005*
- *Pre-Construction Services – 23 August through 21 September 2005*
- *Notice to Proceed with Construction – 22 September 2005*
- *Construction Period – 22 September 2005 through Mid March 2006*

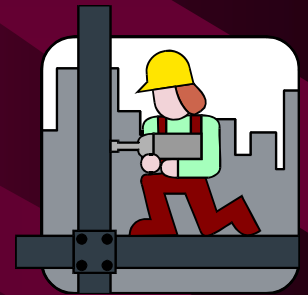
Timeline

Package B: Facilities / Athletic Fields / Site Infrastructure

- *Conceptual Design Approval – 9 August 2004*
- *Schematic Design Approval – 13 September 2004*
- *Design/Construction Documents – 14 Sep 2004 thru 2 January 2006*
- *Bidding Period (RFCSP) – 3 January 2006 through 14 February 2006*
- *Bid Opening – 14 February 2006*
- *Contract Award – 20 March 2006*
- *Pre-Construction Services – 21 March through 26 April 2006*
- *Notice to Proceed with Construction – 27 April 2006*
- *Construction Period – 27 April 2006 through 30 May 2008 (765 days)*
- *Building Commissioning (NEISD Consultant) – 31 May through 31 July 2008*
- *Move-In Period – 21 June through 15 August 2008*
- *New High School Facility Opens – 18 August 2008*

Bid Award Presentation

CTJ High School - 2003 Bond Program



Questions?