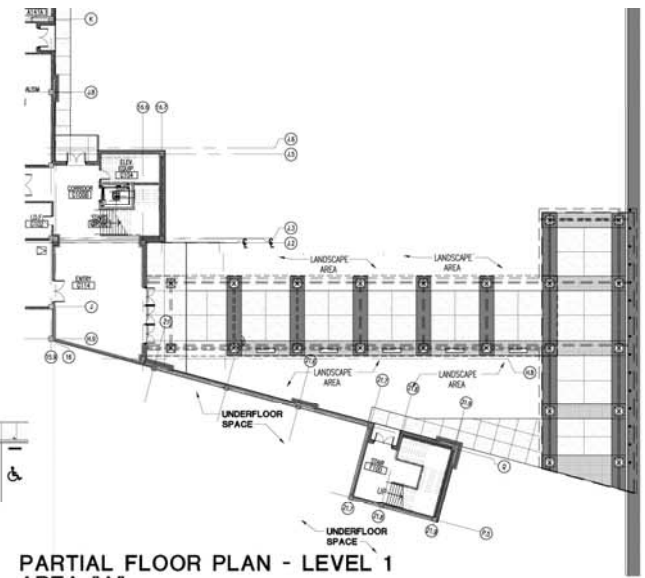


Main Academic Building 1st Floor Plan

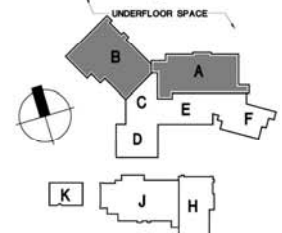


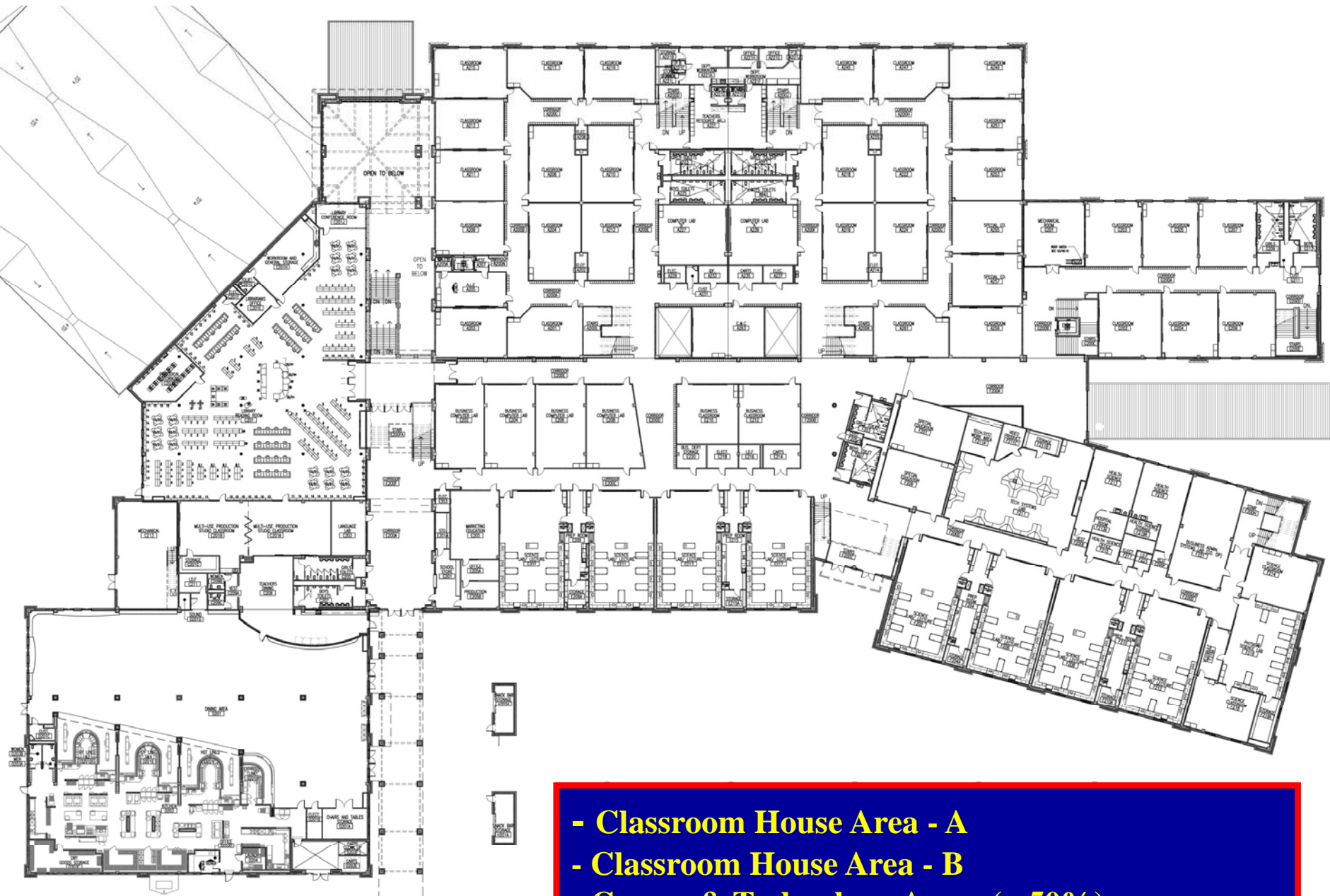
02

PARTIAL FLOOR PLAN - LEVEL 1
AREA "A"
SCALE: 1/16" = 1'-0"

- Administrative Student Service
- Career and Counseling
- Clinic
- Auditorium and Fine Arts Areas
- Main Special Education Areas

SCALE: 1/16" = 1'-0"





Main Academic Building 2nd Floor Plan

- Classroom House Area - A
- Classroom House Area - B
- Career & Technology Areas (~ 50%)
- Science Areas (9 of 16 Labs)
- Special Education Areas Integrated with Houses
- Library and Multi-Use Production Classrooms
- Kitchen and Cafeteria



01

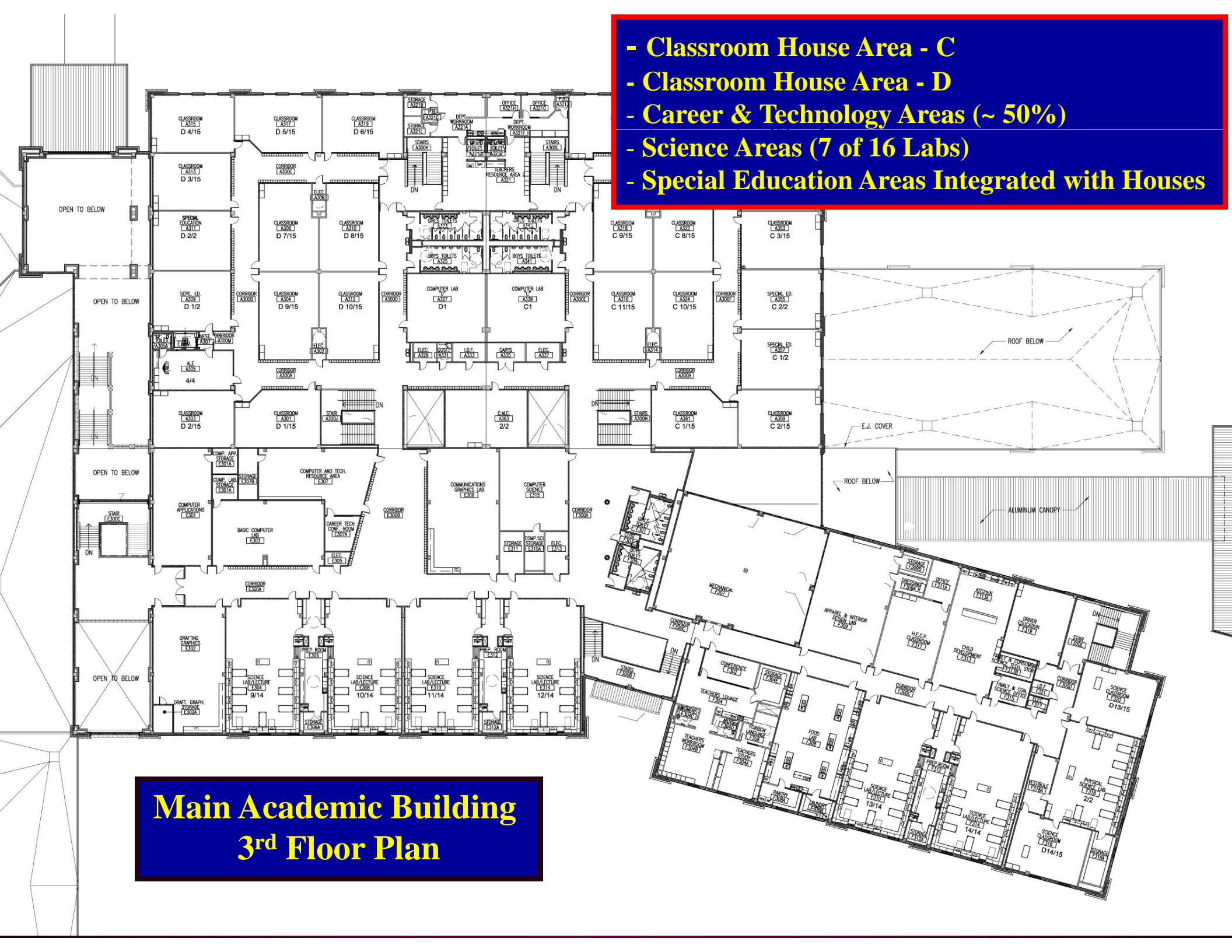
OVERALL FLOOR PLAN - LEVEL 2
AREAS A, C, D, E AND F
SCALE: 1/16" = 1'-0"



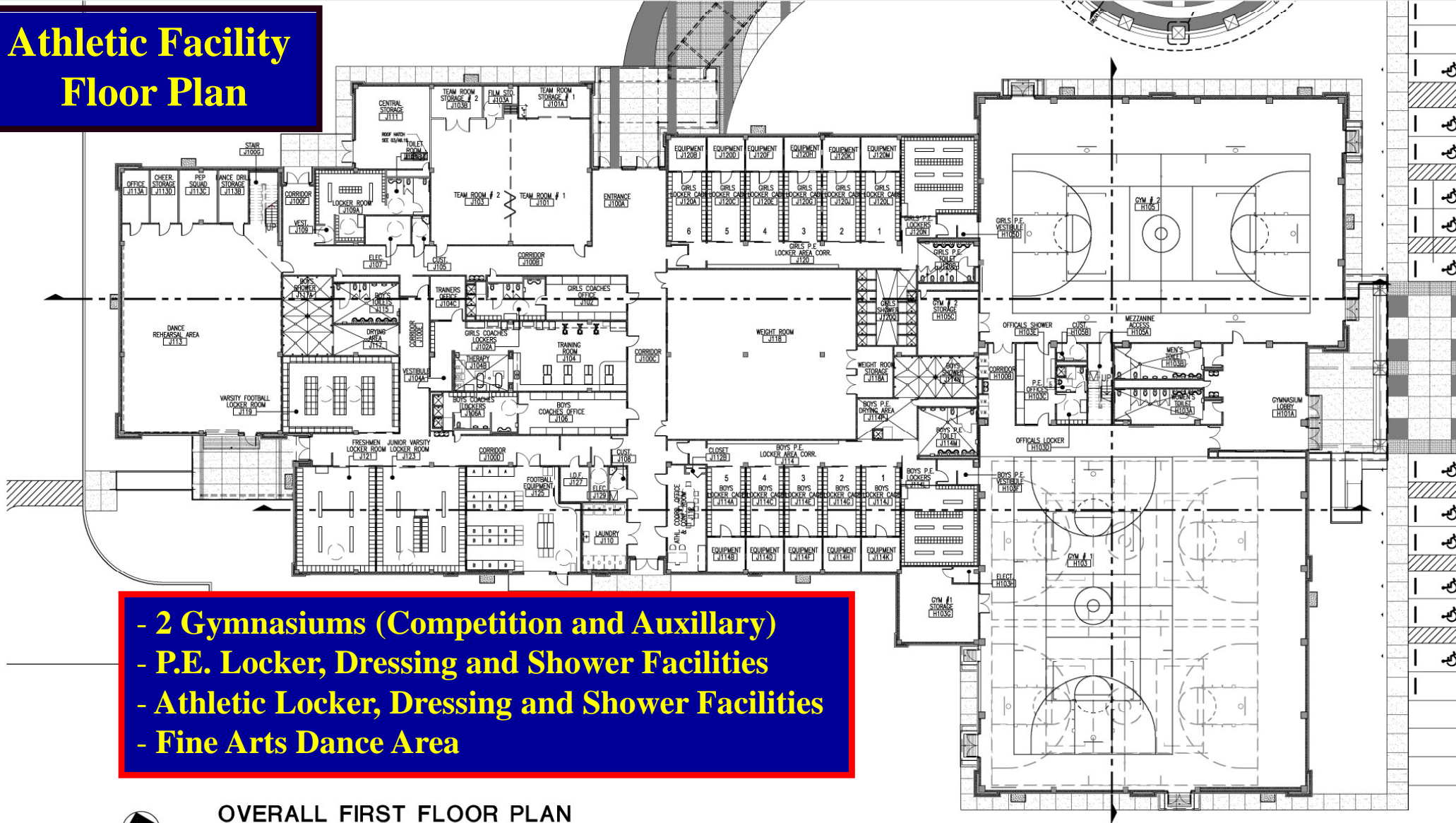
02

- Classroom House Area - C
- Classroom House Area - D
- Career & Technology Areas (~ 50%)
- Science Areas (7 of 16 Labs)
- Special Education Areas Integrated with Houses

Main Academic Building 3rd Floor Plan



Athletic Facility Floor Plan

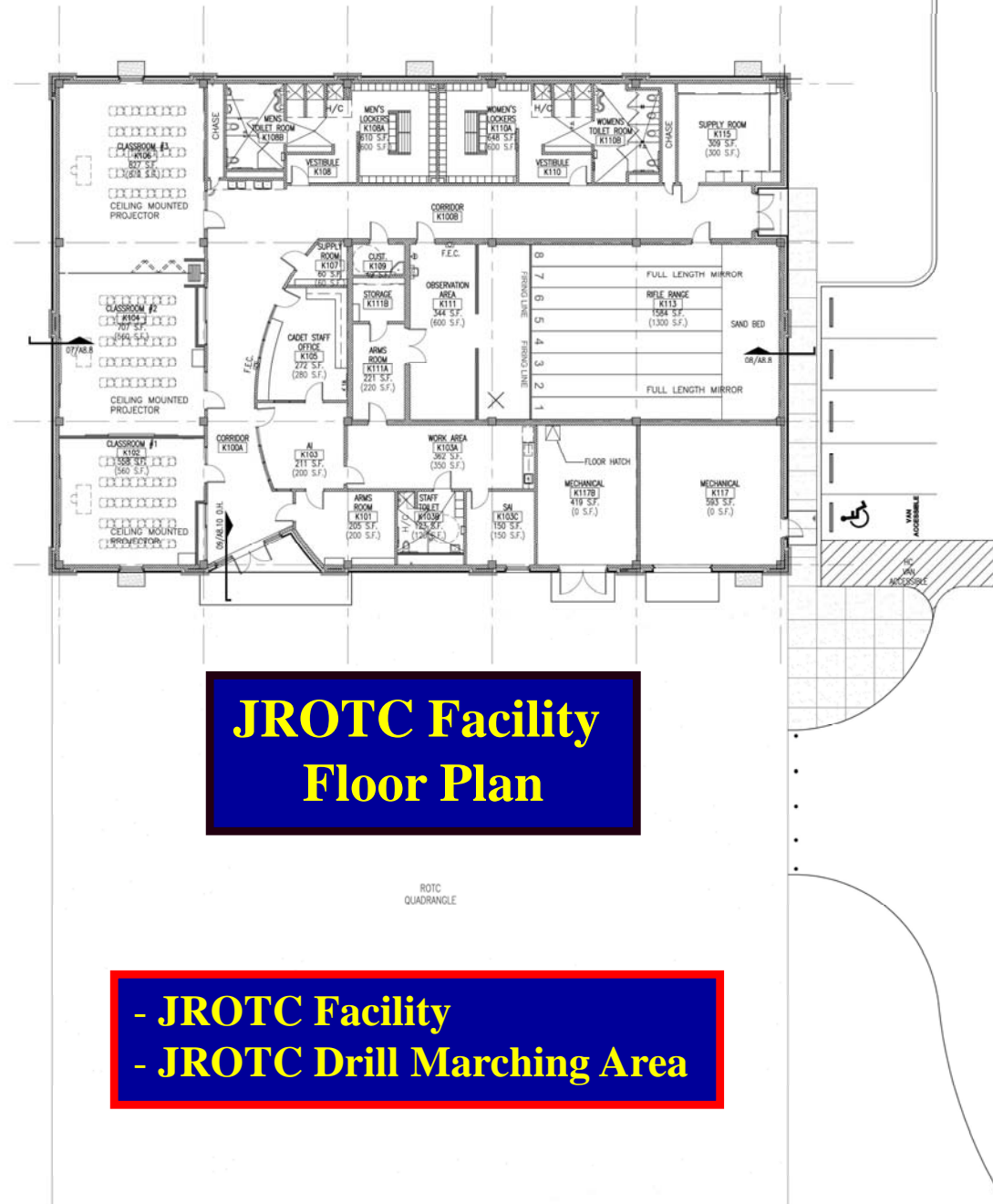


- 2 Gymnasiums (Competition and Auxillary)
- P.E. Locker, Dressing and Shower Facilities
- Athletic Locker, Dressing and Shower Facilities
- Fine Arts Dance Area



01

OVERALL FIRST FLOOR PLAN
ATHLETIC BUILDING (AREAS J AND H)
SCALE : 1/16" = 1'-0"



01

OVERALL FLOOR PLAN
R.O.T.C. (AREA K)

SCALE : 1/8" = 1'-0"