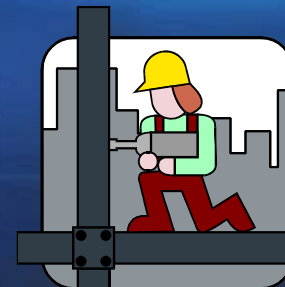




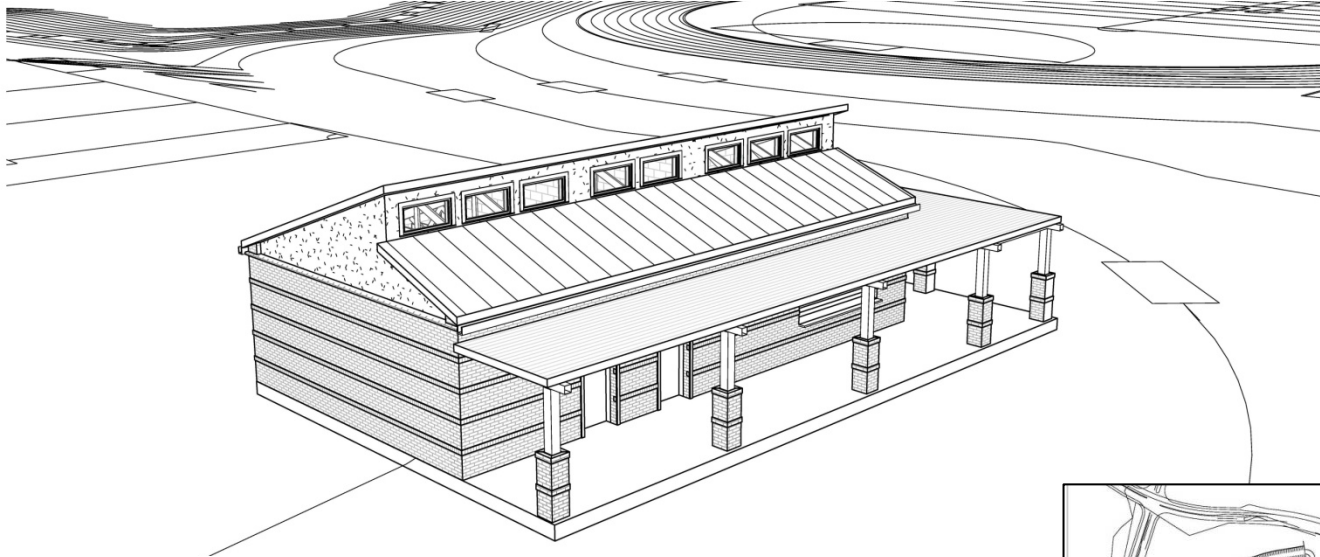
Johnson High School Schematic Design Presentation 2011 Bond Program



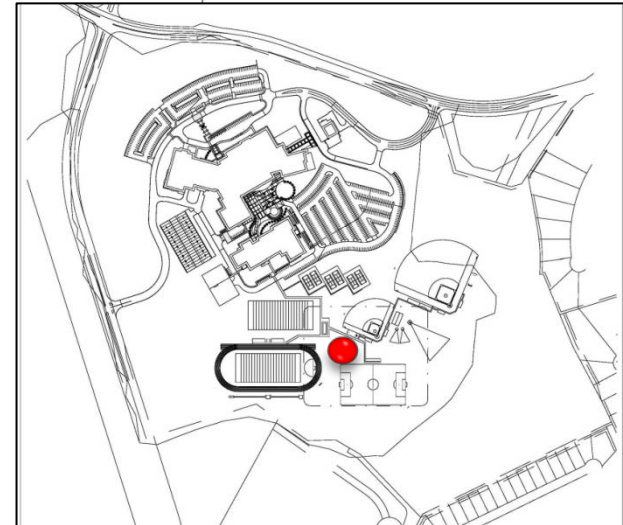
Garrett J. Sullivan, Executive Director
Construction Management and Engineering Department

February 11, 2013

Schematic Design Presentation Agenda



- Project Design Team
- General Site Analysis
- Program Review
- Concept Design Plans
- Program Analysis and Budget Review
- CBAC Review
- Project Schedule Review
- District Staff Recommendation



Presentation Agenda

Johnson High School
North East ISD

Johnson High School Project Design Team

- Architect: Garza/Bomberger & Associates
- MEP Engineer: Alderson & Associates, Inc.
- Structural Engineer: Reynolds, Slattner, Chetter & Roll, Inc.
- Civil Engineer: Pape-Dawson Engineers, Inc.
- Fire Protection Engineer: Protection Development, Inc.
- Landscape Architect: Cooper-Lochte Landscape Architects
- Roofing Engineer: Wiss Janney Elstner & Associates
- Geotechnical & Material Testing: Terracon Consultants, Inc.
- Test, Balance & Commissioning: Energy Testing & Balance, Inc.
- Code Consultant: Protection Development, Inc.

Johnson High School Existing Site Aerial



Site Aerial – Existing Campus

*Johnson High School
North East ISD*

Johnson High School Design Program Summary

- **New Athletic Outdoor Concessions and Restrooms Facility**
 - Facility Program @ 1,175 sq. ft.
 - Concession Stand with Storage Area
 - Mens' Restroom
 - Womens' Restroom

I. JOHNSON HIGH SCHOOL 2011 BOND PROGRAM SUMMARY						
ATHLETIC OUTDOOR CONCESSIONS AND RESTROOMS FACILITY				Number	Sq. Ft.	Total Sq.Ft.
	1.	Concession Stand		1	235	235
	2.	Concession Storage		1	100	100
	3.	Mens Restroom		1	260	260
	4.	Womens Restroom		1	260	260
	5.	Net to Gross Area (Includes Wall Thicknesses)		1	320	320
	Athletic Outdoor Concessions and Restrooms Facility Total (sq.ft.) =					1,175

Johnson HS Athletic Outdoor Concessions and Restrooms Facility Perspective



Johnson HS Athletic Outdoor Concessions
and Restrooms Facility Perspective

*Johnson High School
North East ISD*

Johnson HS Schematic Design Plan Budget Analysis

Concept Plan	Construction Cost Estimate	Under/Over Budget
Board-Approved Budget	\$ 625,000	-
Schematic Design Concept Plan	\$ 575,000	- \$ 50,000

District Staff Recommendation is to Approve the Johnson HS Schematic Design Concept Plan

Johnson High School Program Analysis

Program Element	Johnson Program	Johnson Design
New Athletic Outdoor Concessions and Restrooms Facility		
Concession Stand	235	235
Concession Storage Area	100	108
Mens' Restroom	260	258
Womens' Restroom	260	259
Circulation and Wall Thicknesses (Net To Gross)	320	325
TOTAL PROGRAM	1,175	1,185

Johnson High School Budget Review

- Design Account: \$ 75,000
- Construction Account: \$ 625,000
- Technology Account: \$ 0
- Furniture, Fixtures, and Equipment Account: \$ 0
- Program Contingency: \$ 50,000
- TOTAL PROGRAM = \$ 750,000

Johnson High School CBAC Review

2011 Bond Planning Estimate

Board-Approved Budget = \$625,000

Project Scope

- New Athletic Outdoor Concessions and Restrooms Facility including: Concession Stand with Storage Area, Mens' Restroom and Womens' Restroom Areas
- Total New Construction @ 1,175 sq.ft.

Timeline

- All Facilities Completed by Jun 2014

2011 Bond Planning Estimate

✓ Construction Cost Estimate = \$575,000

✓ Project Scope

- New Athletic Outdoor Concessions and Restrooms Facility including: Concession Stand with Storage Area, Mens' Restroom and Womens' Restroom Areas
- Total New Construction @ 1,185 sq.ft.

✓ Timeline

- All Facilities Completed by Jan 2014

Johnson HS Design & Construction Timeline



Project Schedule

Johnson High School
North East ISD

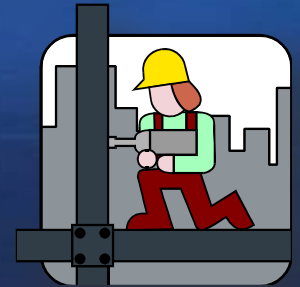
Johnson High School Project

District Staff Recommendation

- Recommend Approval of Johnson High School Schematic Design Plan
 - Constructs Bond-Approved Plan which includes:
 - New Athletic Outdoor Concessions and Restrooms Facility including:
 - Concession Stand with Storage Area
 - Mens' Restrooms
 - Womens' Restrooms



Johnson High School Schematic Design Presentation 2011 Bond Program



Questions?