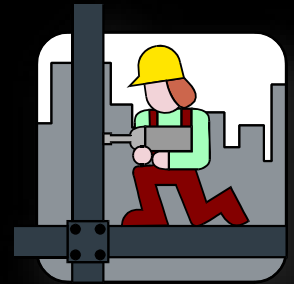
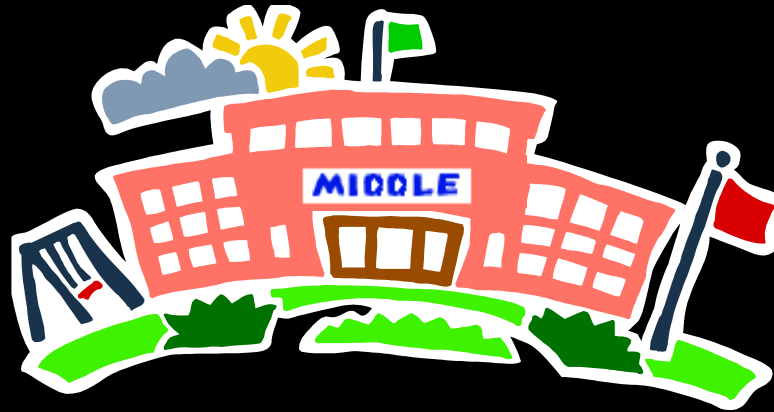




# Krueger Middle School Phase 2 Campus Replacement Project Schematic Design Presentation 2015 Bond Program



Garrett J. Sullivan, Executive Director  
Construction Management and Engineering Department

November 14, 2016

# Schematic Design Presentation Agenda

---

- Project Design Team
- Program Review
- Project Site Analysis
- Concept Design Plans
- Budget Review
- Project Phasing Plan
- Schedule Review
- Staff Recommendation





# Krueger Middle School Project Design Team

---

- Architect: LPA
- MEP Engineer: Cleary Zimmermann Engineers
- Structural Engineer: Alpha Consulting Engineers
- Civil Engineer: CDS Muery
- Roofing Engineer: Wiss, Janey, Elstner & Associates
- Technology Engineer: Combs Consulting Group
- Fire Protection/Building Code Engineer: Protection Development, Inc.
- Landscape Architect: Cooper-Lochte Landscape Architects
- Food Service Engineer: Cosper & Associates
- Acoustical Engineer: BAI
- Geotechnical & Material Testing: Professional Services Industries
- Test, Balance, and Commissioning: Energy Testing and Balance





# Krueger Middle School Site Aerial



Campus Site Aerial

*Krueger Middle School  
North East ISD*



# 2015 Bond Program Review for Krueger Middle School Project # 5.3

---

- Construct New Cafeteria and Kitchen
- Construct New Fine Arts Facility (Band, Orchestra, Choir, Drama & Art)
- Construct New Athletic Facility
- Construct New Campus Central Plant (Air-Cooled Chillers)
- Construct New Field House with Restrooms and Storage
- Construct New Tennis Courts (4 Total)
- Construct Various Site Improvements (Landscape, Irrigation, Drainage, Site Utilities, and Hardscape)



# 2015 Bond Program Review for Krueger Middle School

---

1. **Construct New Facility Addition (74,052 sq. ft.)**
  - a. **Food Service Program: Kitchen, Cafeteria, and Stage**
  - b. **Fine Arts Program: Band, Orchestra, Choir, Drama, and Art Rooms**
  - c. **Athletic Program: 2 Gymnasiums, Boys' and Girls' Locker Rooms, Weight Room, Laundry Room, Coaches' Offices, and Storage**
  - d. **Student/Public Restrooms**
  - e. **Support Areas (Custodial and MEP)**
2. **Construct New Central Plant (Air-Cooled Chillers, Boilers, & Pumps @ 4,070 sq. ft.)**
3. **Construct New Field House (Athletic Storage and Public Restrooms @ 940 sq. ft.)**
4. **Construct Various Site Improvements**
  - a. **New Bleacher Seating for Football Field**
  - b. **New Tennis Courts (4 Total)**
  - c. **New Parking Area and Fire Lane**
  - d. **Site Drainage Structure and Underground Storm Piping System**
  - e. **Landscape, Irrigation, Site Utilities, and Hardscape Walkways to Support the New Facility Addition**

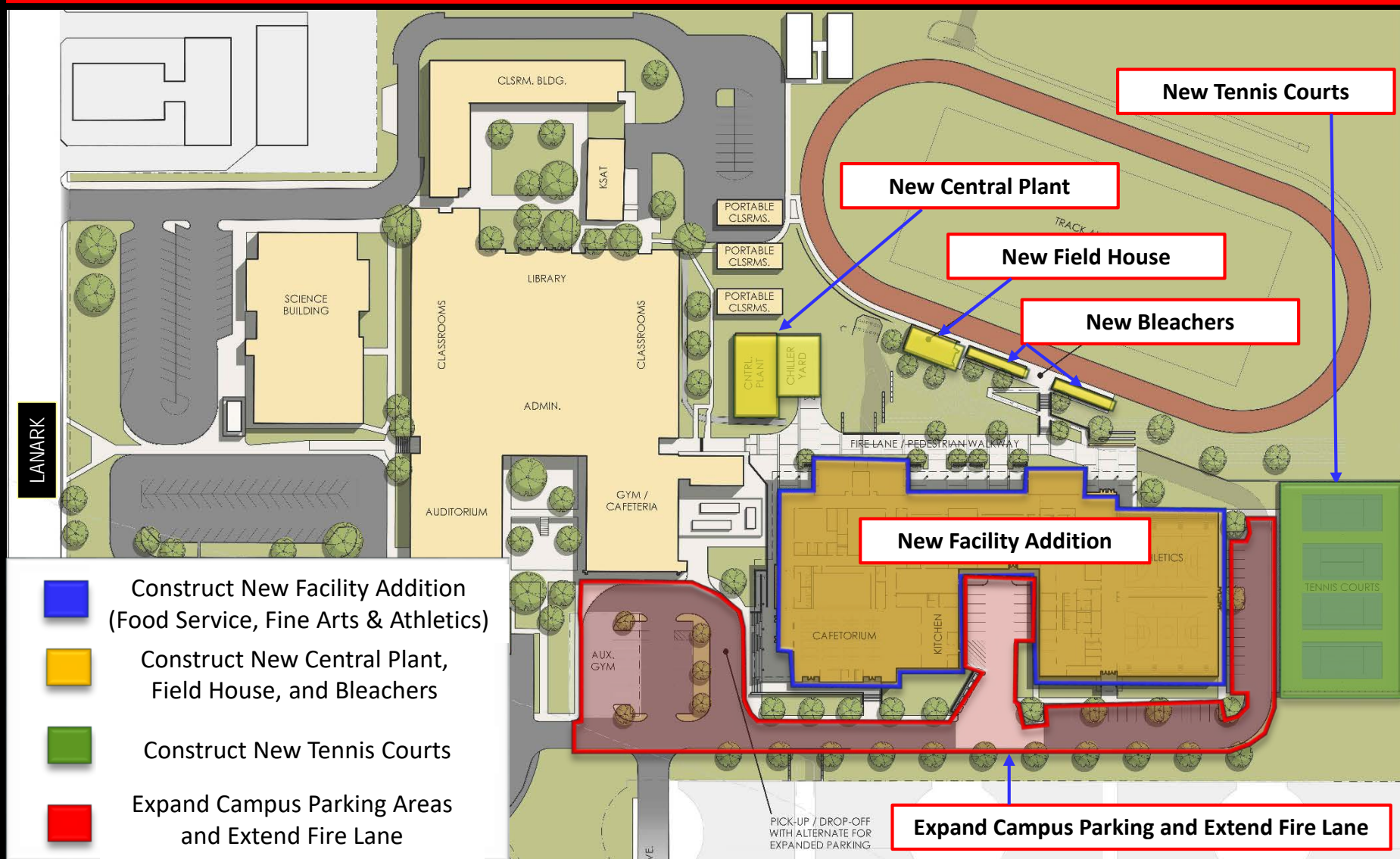
# Krueger Middle School Existing Site Conditions



Krueger MS Existing Site Conditions

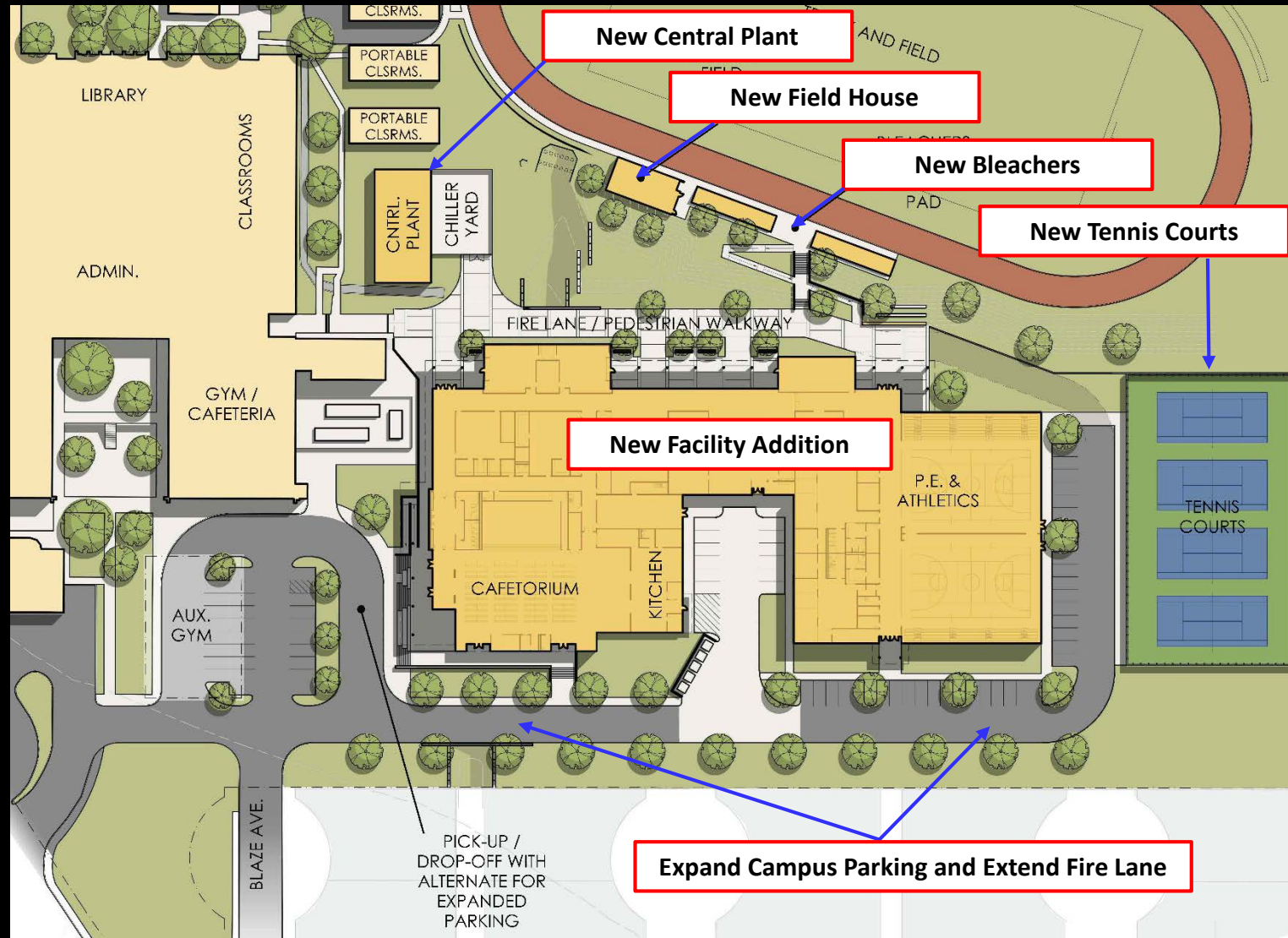
*Krueger Middle School  
North East ISD*

# Krueger Middle School Project Site Analysis

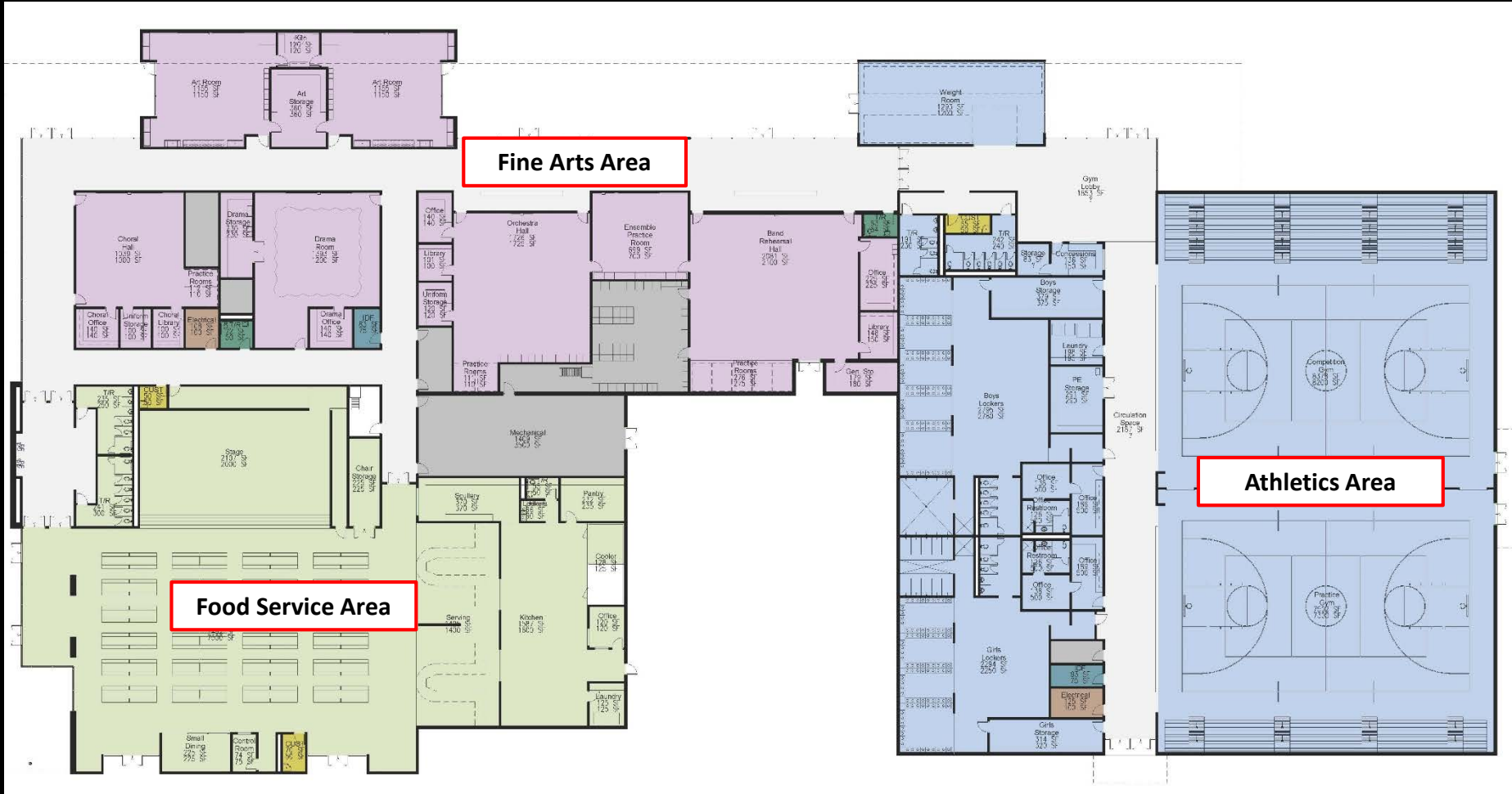




# 2015 Bond Program Krueger MS Facility Improvements



# Krueger Middle School Project Floor Plan



New Facility Addition Floor Plan

Krueger Middle School  
North East ISD

# Krueger Middle School Project Floor Plan (Food Service – Kitchen & Cafeteria)



New Facility Addition Floor Plan (Food Service)

*Krueger Middle School  
North East ISD*



This architectural floor plan illustrates the second floor of a school building, featuring a variety of rooms for arts and general education. The layout is divided into several distinct sections, each with rooms color-coded for clarity.

**Top Section (Purple Rooms):**

- Art Rooms:** Three Art Rooms, each measuring 1155 SF, are arranged along the top wall. A central **Art Storage** room (365 SF) and a **Kiln** (120 SF) are also located in this section.

**Middle-Left Section (Purple Rooms):**

- Choral Hall:** 1039 SF.
- Drama Room:** 1393 SF.
- Practice Rooms:** 115 SF.
- Drama Storage:** 230 SF.
- Choral Office:** 140 SF.
- Uniform Storage:** 100 SF.
- Choral Library:** 100 SF.
- Electrical:** 108 SF.
- Drama Office:** 140 SF.
- IDF:** 83 SF.

**Middle-Right Section (Purple Rooms):**

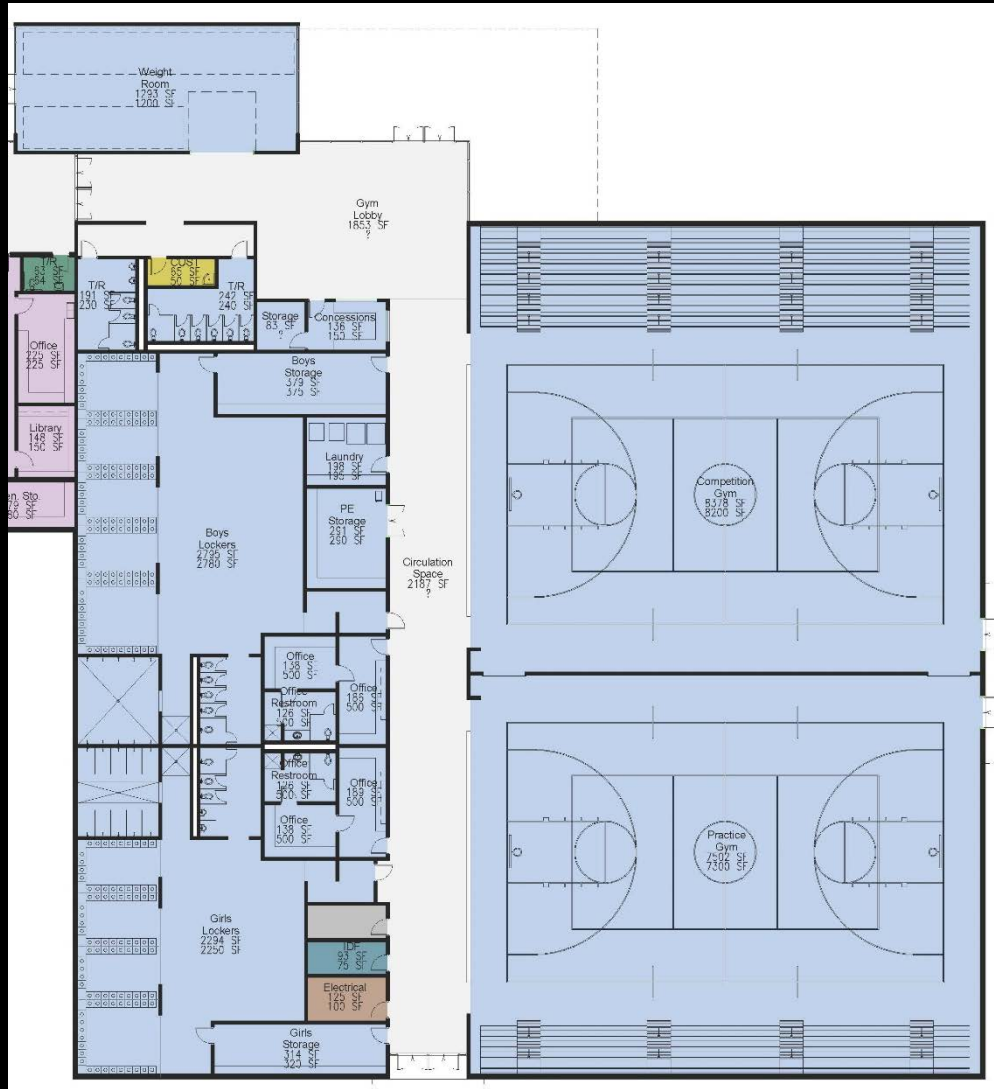
- Orchestra Hall:** 1726 SF.
- Ensemble Practice Room:** 669 SF.
- Band Rehearsal Hall:** 2081 SF.
- Office:** 140 SF.
- Library:** 101 SF.
- Uniform Storage:** 120 SF.
- Practice Rooms:** 111 SF.
- Office:** 225 SF.
- Library:** 148 SF.
- Gen. Sto.:** 179 SF.

**Bottom Section (Green Rooms):**

- Stage:** 2197 SF.
- Chair Storage:** 225 SF.
- Mechanical:** 1409 SF.
- T/R:** 235 SF.
- CUST:** 250 SF.

The plan also includes various smaller rooms and storage areas, such as **Office** (225 SF), **Library** (150 SF), and **Gen. Sto.** (180 SF), distributed throughout the floor.

*Krueger Middle School  
North East ISD*



## New Facility Addition Floor Plan (Athletics)

*Krueger Middle School  
North East ISD*

# Krueger Middle School New Facility Addition Perspective

---

**View Looking South from Drop-Off Loop**



**New Facility Addition Perspective**

*Krueger Middle School  
North East ISD*



# Krueger Middle School New Facility Addition Perspective

View Looking Southwest from Athletic Fields



New Facility Addition Perspective

*Krueger Middle School  
North East ISD*

# Krueger Middle School New Facility Addition Perspective

**View Looking Northwest from Athletic Fields**



**New Facility Addition Perspective**

*Krueger Middle School  
North East ISD*



# Krueger Middle School New Facility Addition Perspective

---

**View Looking East from Campus Western Boundary**



**New Facility Addition Perspective**

*Krueger Middle School  
North East ISD*



# 2015 Bond Budget Review for Krueger Middle School

---

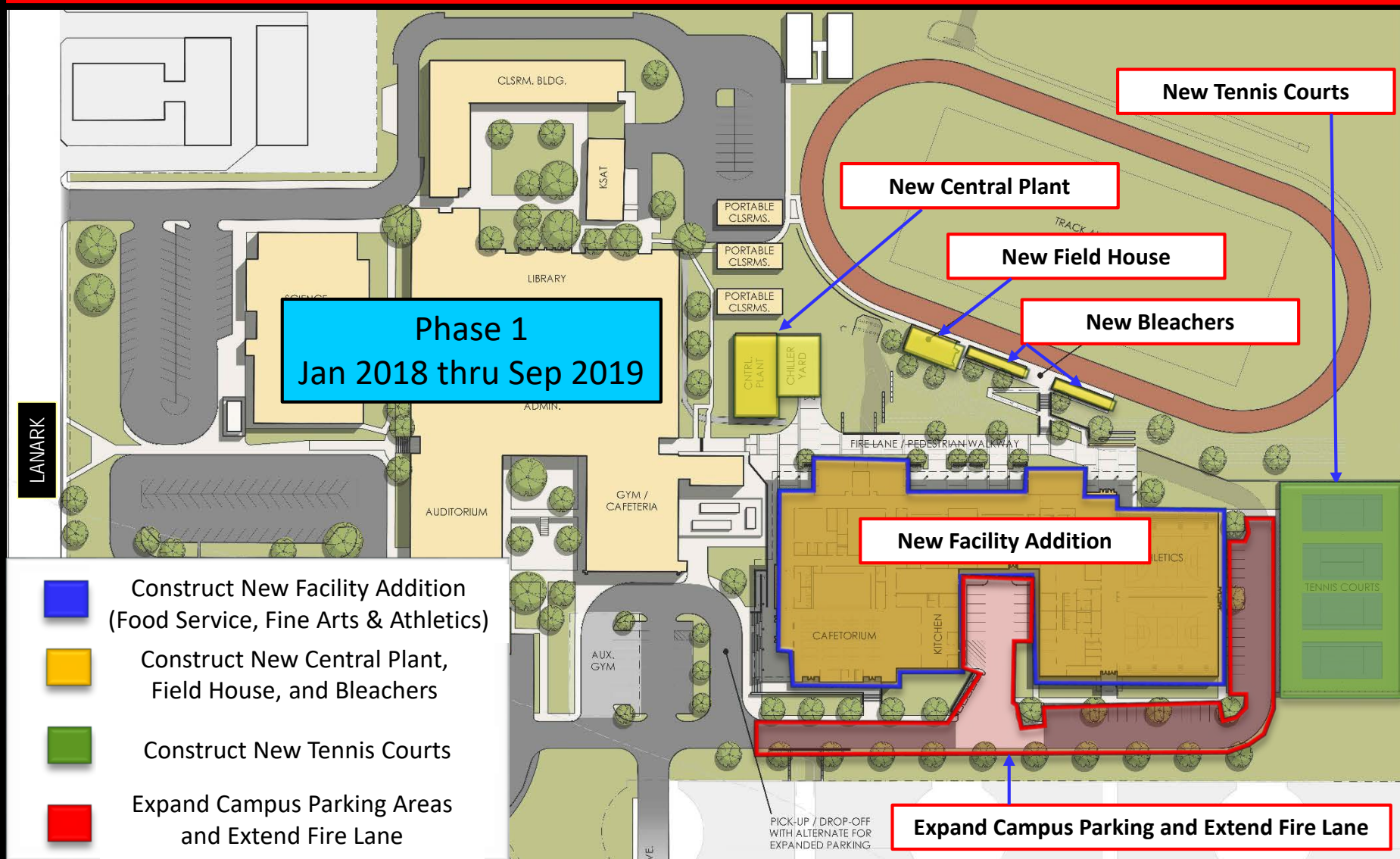
• Design Account:	\$ 2,700,000
• Construction Account:	\$ 24,500,000
• Technology Account:	\$ 50,000
• FF&E Account:	<u>\$ 750,000</u>
TOTAL BOND PROGRAM =	\$ 28,000,000

# Krueger Middle School Campus Replacement Program (Multi-Bond) Fly-Around

---

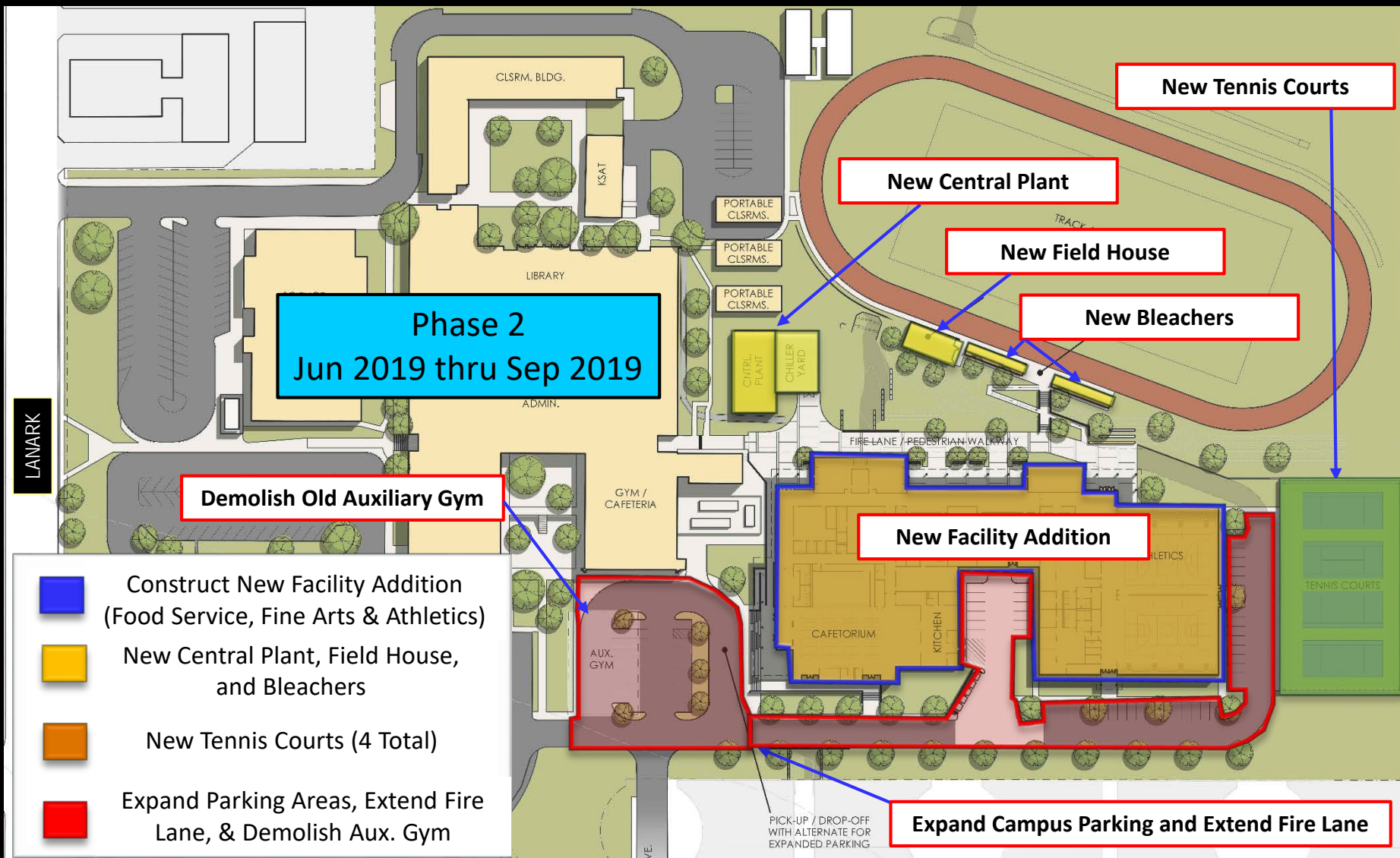


# Krueger Middle School Project Phasing Plan





# Krueger Middle School Project Phasing Plan





# 2015 Bond Design & Construction Timeline



# Krueger Middle School 2015 Bond Project

## District Staff Recommendation

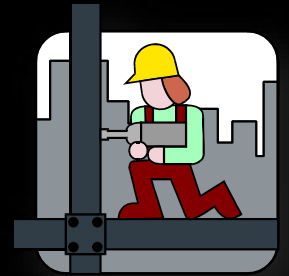
---

- Recommend Approval of Krueger Middle School Schematic Design Presentation which Constructs the following 2015 Bond-Approved Program Elements:
  - Construct New Cafeteria and Kitchen
  - Construct New Fine Arts Facility (Band, Orchestra, Choir, Drama & Art)
  - Construct New Athletic Facility
  - Construct New Campus Central Plant (Air-Cooled Chillers)
  - Construct New Field House with Restrooms and Storage
  - Construct New Tennis Courts (4 Total)
  - Various Site Improvements (Landscape, Irrigation, Drainage, Site Utilities, & Hardscape)
  - Construction Budget = \$ 24,500,000





# Krueger Middle School Phase 2 Campus Replacement Project Schematic Design Presentation 2015 Bond Program



## Questions