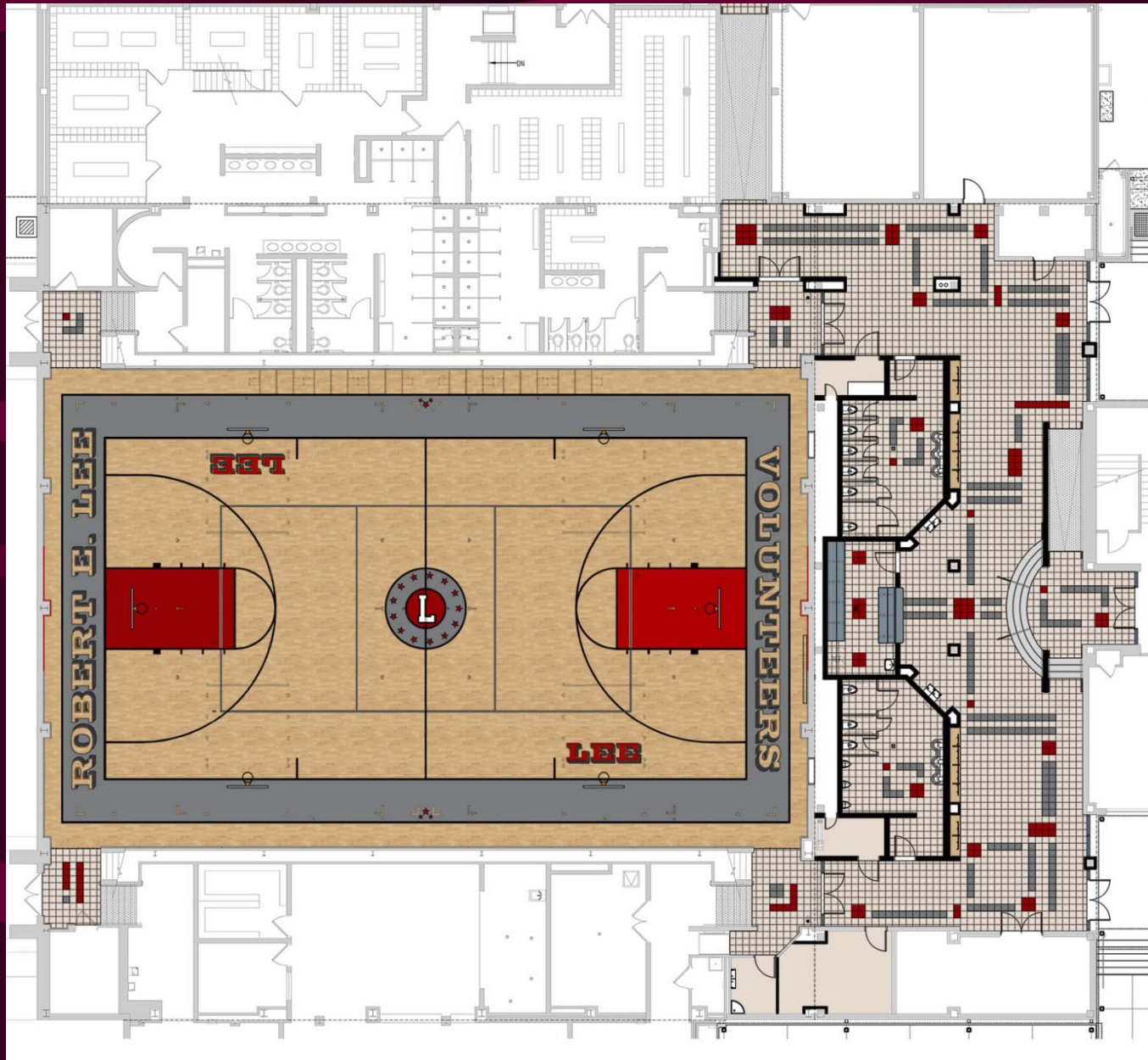
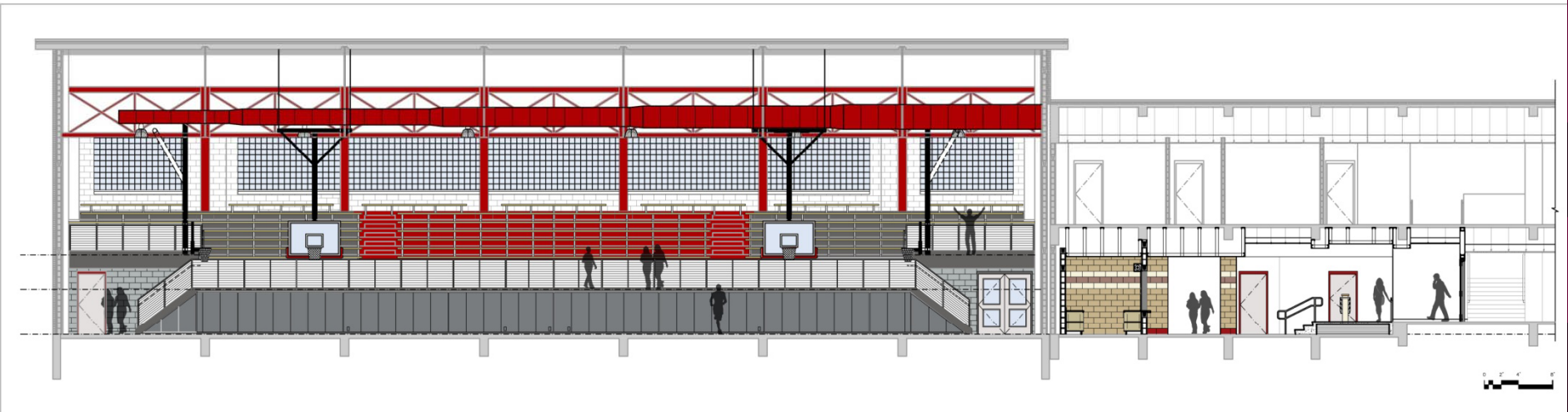
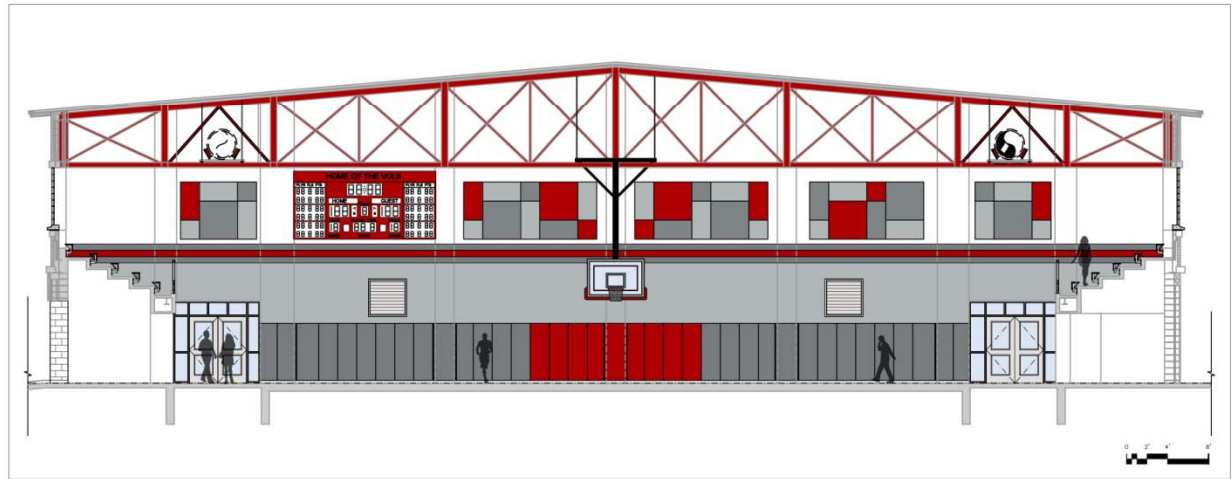


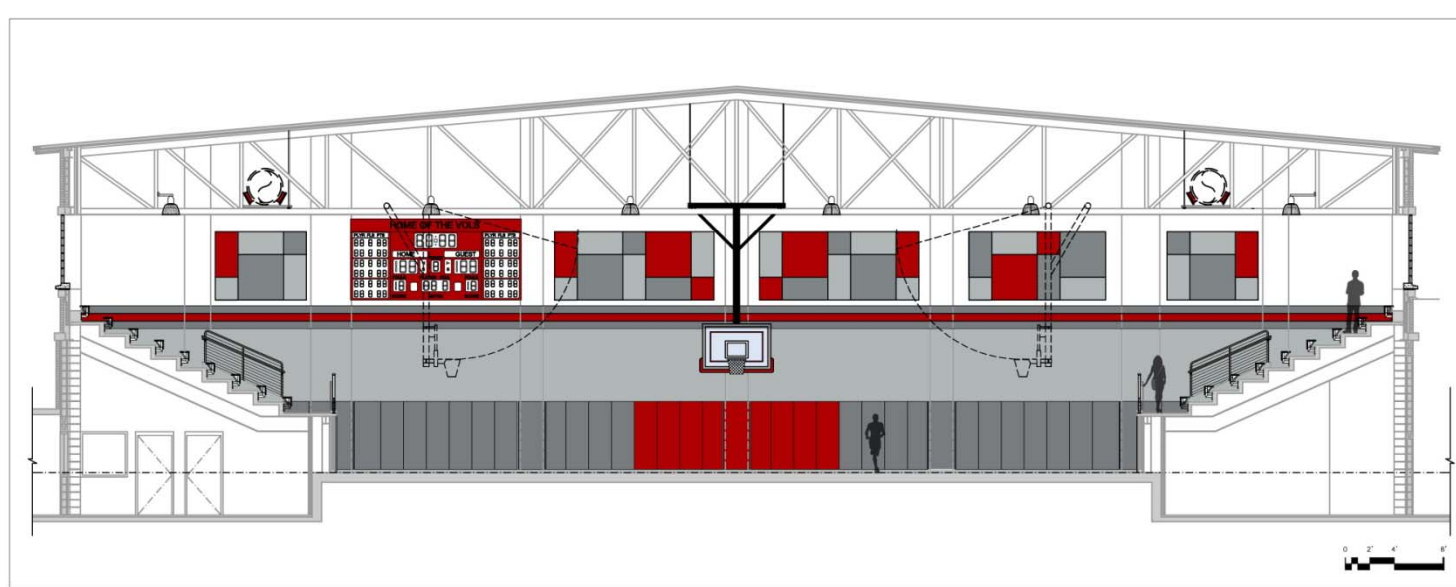
# Lee HS Athletic Renovations – Floor Plan



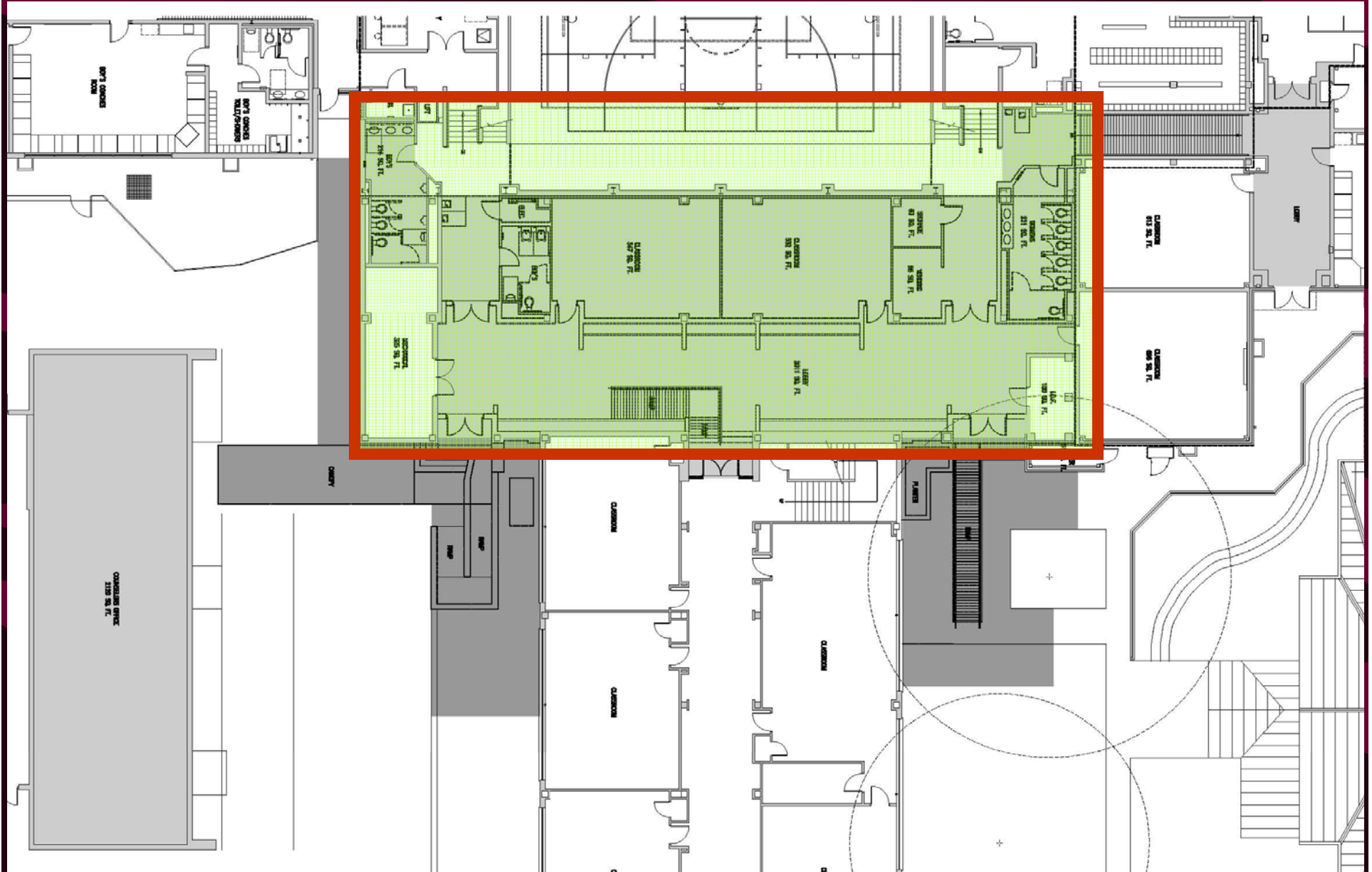
# Lee HS Athletic Renovations – Interior Elevations



# Lee HS Athletic Renovations – Interior Elevations

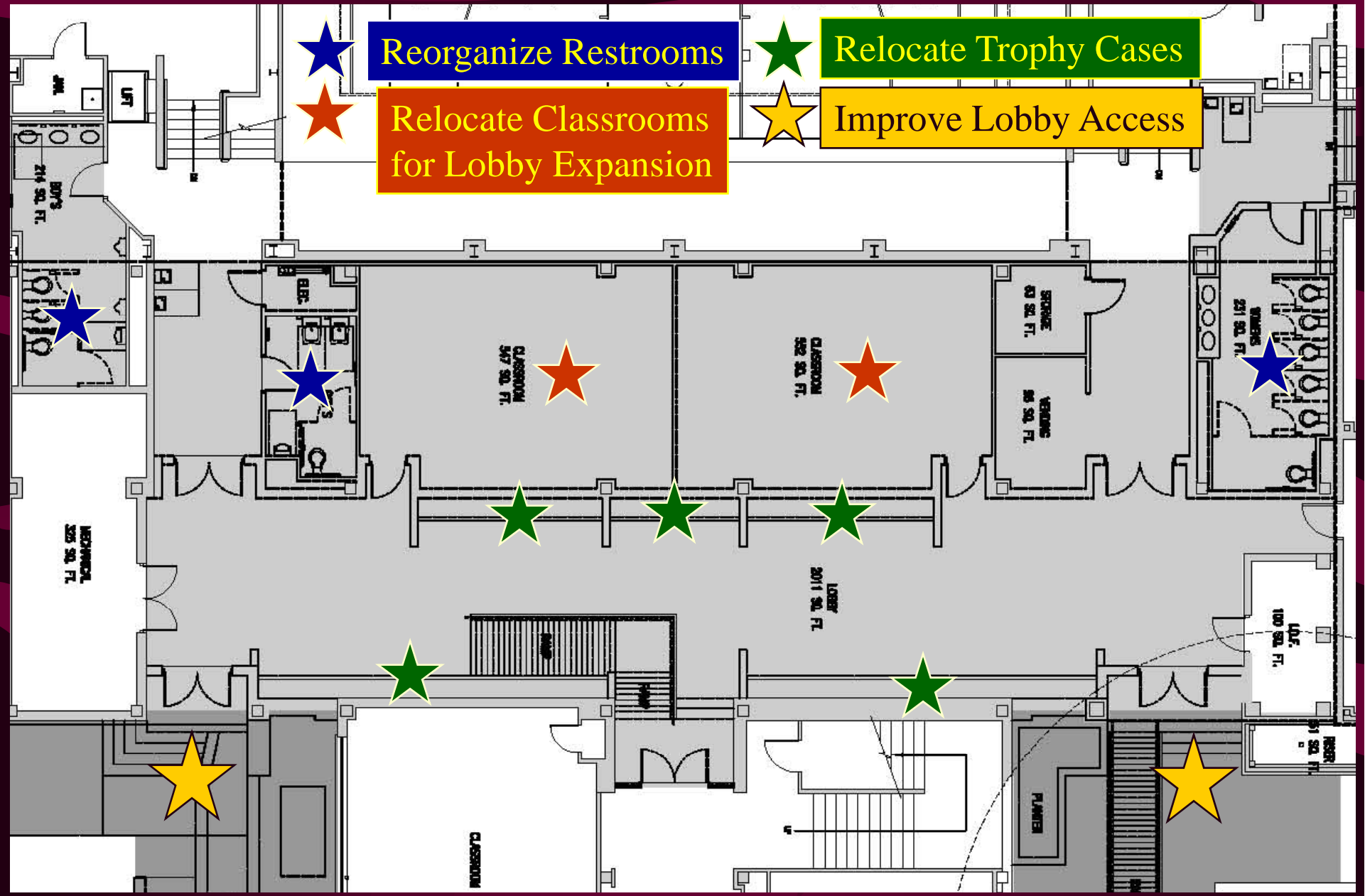


# Lee HS Athletic Renovations – Demolition Plan



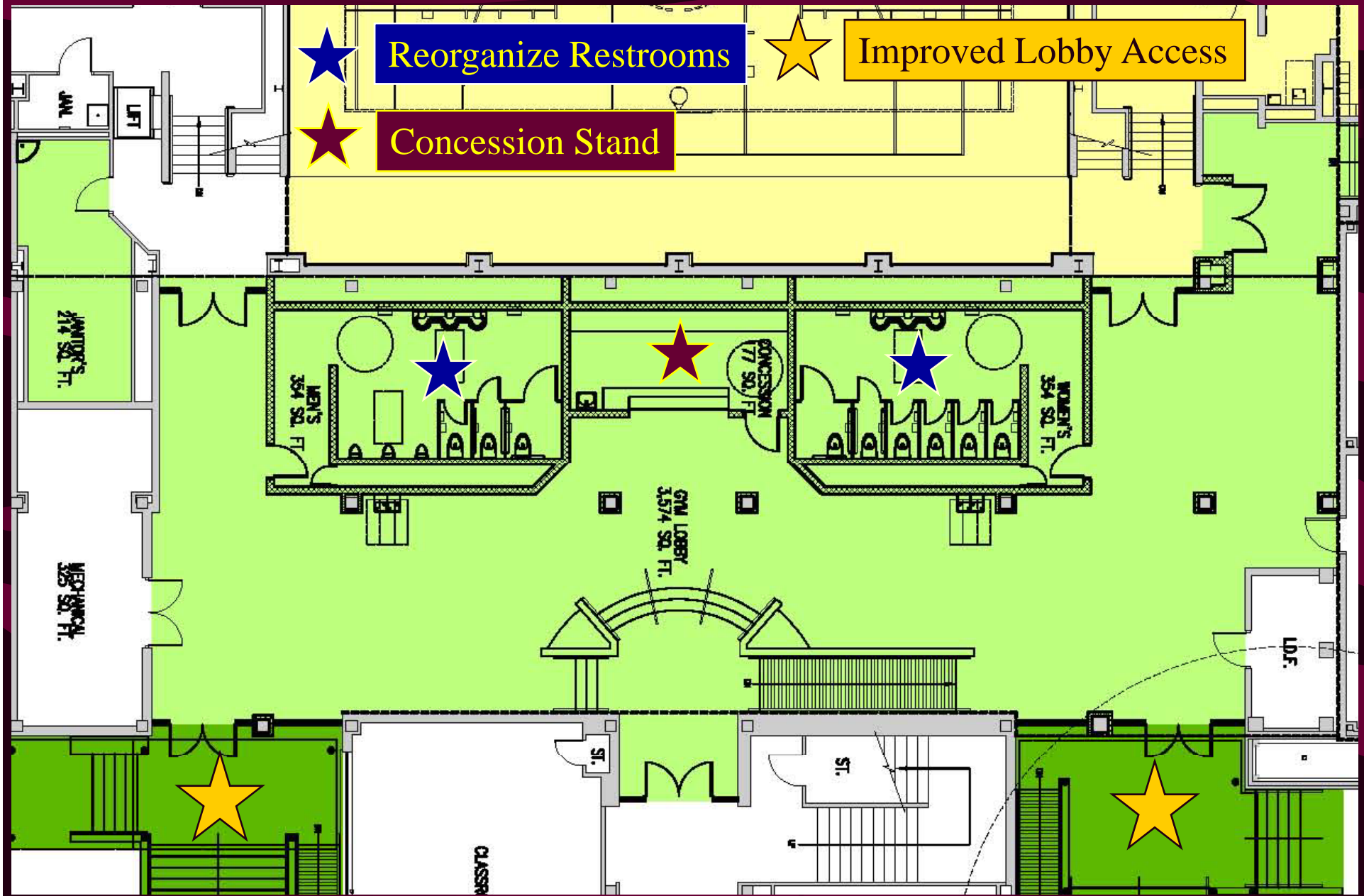


# Lee HS Athletic Renovations – Demolition Plan



This architectural floor plan depicts a school building with various rooms and a central corridor. A red rectangular highlight is drawn around a central section of the plan. The highlighted area includes a large central corridor labeled 'CENTRAL CORRIDOR 1,174 SQ. FT.', a 'MEN'S 364 SQ. FT.' restroom, a 'WOMEN'S 364 SQ. FT.' restroom, a 'LOCKER ROOM 77 SQ. FT.', and a 'GYM LIBRARY 1,574 SQ. FT.' area. To the left of the highlighted area are two 'CLASSROOM' spaces, each labeled '1,068 SQ. FT.'. To the right are two more 'CLASSROOM' spaces. Above the highlighted area are 'BOYS' LOCKERS ROOM' and 'BOYS' LOCKERS TOILET/SHOWER'. Below the highlighted area are several 'CLASSROOM' spaces and a 'ST.' (stair) area. The plan also shows various other rooms, including a 'LIB.' (library) and a 'ST.' (stair) area. The overall layout is complex, with many rooms and corridors, and the red highlight is a key feature.

# Lee HS Athletic Renovations – Renovation Plan



# Lee HS Athletic Renovations – Renovation Plan

