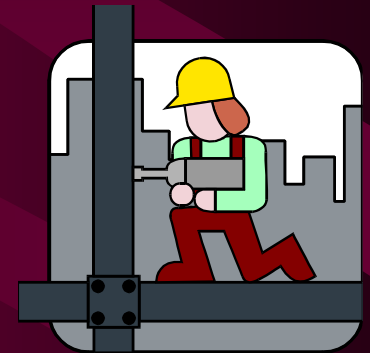
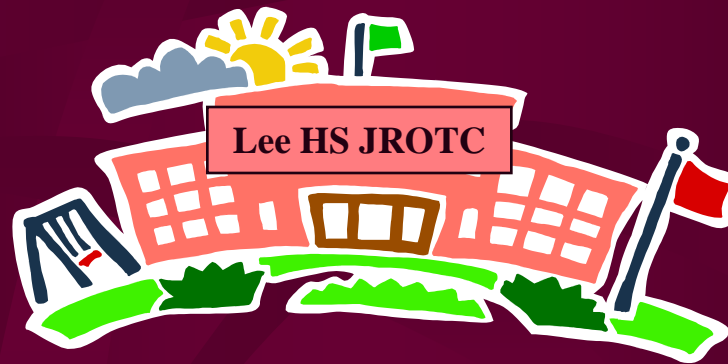


Lee High School New JROTC Facility

Schematic Design Presentation

2007 Bond Program



Jorge M. Cabello, P.E. – Senior Director
Construction Planning & Design Department

January 21, 2010

Lee High School New JROTC Facility Project

Design Team

- Architect: Pfluger Associates Architects
- MEP Engineer: mS2 Consulting Engineers
- Structural Engineer: Danysh & Associates
- Civil Engineer: Macina-Bose-Copeland Engineers
- Landscape Architect: Cooper-Lochte
- Roofing: Wiss Janney Elstner & Associates
- Technology: Combs Consulting Group
- Geotechnical and Material Testing: Raba-Kistner Consultants
- Test, Balance & Commissioning: Testing Specialties
- Code Consulting: Protection Development, Inc.



Lee High School Site Aerial



Jackson-Keller

Lee High School Site Aerial with Proposed Perspective of JROTC Facility



Jackson-Keller

Lee High School Site Aerial with Proposed Perspective of JROTC Facility



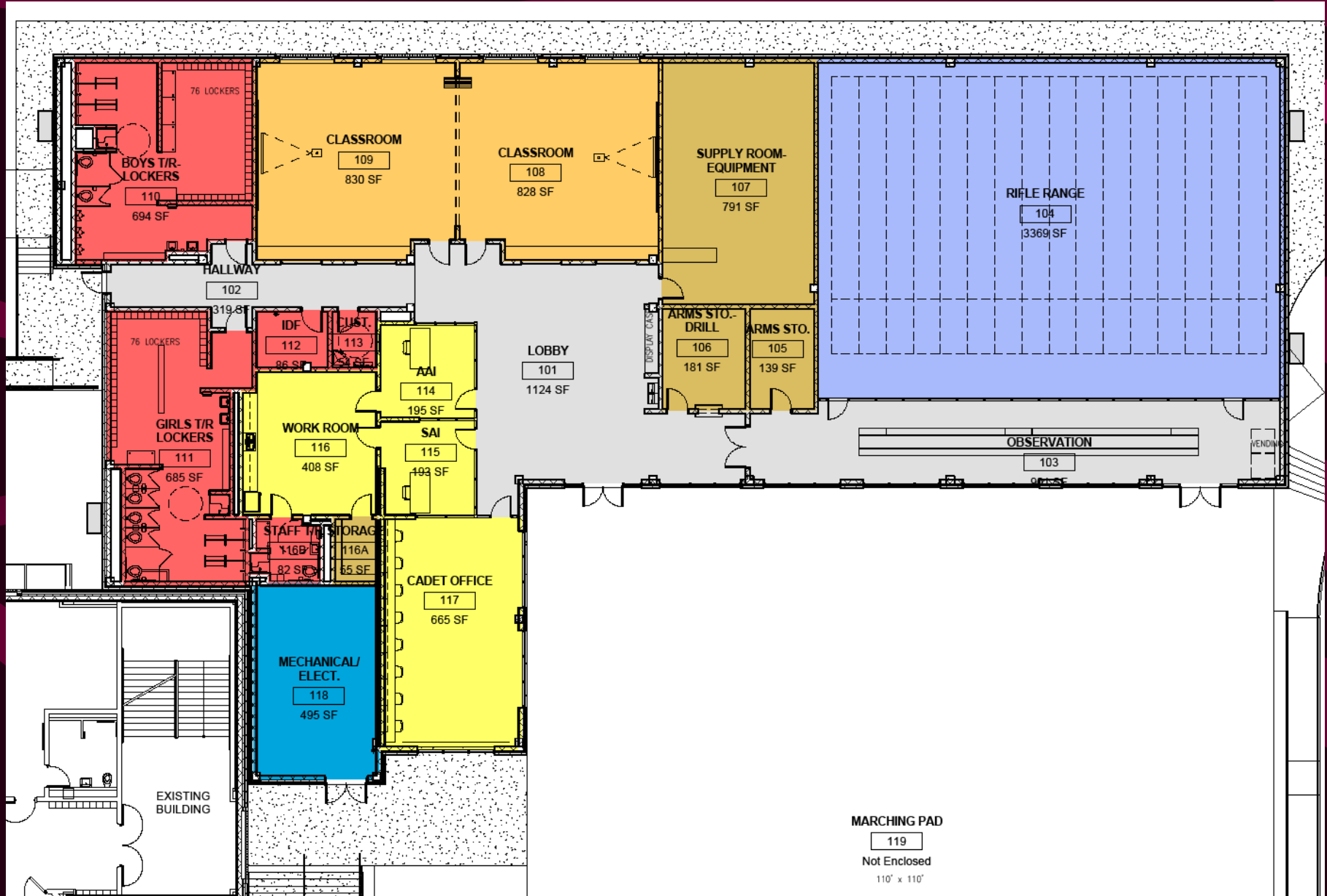
Lee High School – New JROTC Facility Perspective



Lee High School – New JROTC Facility Site Plan



Lee High School – New JROTC Facility Floor Plan



Lee High School – New JROTC Facility Elevations



2

EAST ELEVATION

SCALE: 1" = 10'-0"

Lee High School – New JROTC Facility Elevations



3 **SOUTH ELEVATION**
SCALE: 1" = 10'-0"

Lee High School – New JROTC Facility Elevations



4

WEST ELEVATION

SCALE: 1" = 10'-0"

Lee High School – New JROTC Facility Elevations



1

NORTH ELEVATION

SCALE: 1" = 10'-0"

Lee High School New JROTC Facility

Program Review

Program Element	JROTC Program	JROTC Design
General Instructional Program (sq ft) – 2 Classrooms	1,500	1,680
Indoor Rifle Range (16 Lanes) and Observation Area	3,700	4,274
JROTC Operations Areas (Arms Room and Supply Room)	765	1,168
General Learning Instructional Program Subtotal (sq ft) =	5,965	7,122
Men and Women Locker Rooms / Dressing Rooms / Showers	1,300	1,396
SAI/AAI Office and Support Area	515	475
Cadet Office and Support Area	785	1,085
Core Areas Subtotal (sq ft) =	2,600	2,956
Corridors / Stair Towers / Circulation / Walls Central Plant and MEP Services (sq ft) =	5,185	3,398
TOTAL PROGRAM	13,750	13,476

Lee High School New JROTC Facility

Schematic Design Budget Review (Revised)

Construction Account:	\$ 2,829,960.00
Design Account:	\$ 350,040.00
Technology Account:	\$ 20,000.00
FF&E ¹ Account:	<u>\$ 25,000.00</u>
Grand Total:	\$ 3,225,000.00

Note 1 – FF&E = Furniture, Fixtures and Equipment

**Schematic Design Phase ~ \$210.00 / sq. ft. based on
Schematic Design Cost Estimate of \$2,829,960**

Lee High School New JROTC Facility

Timeline Review

- Design Phase: 15 Jun 09 thru 10 May 10
- Bidding Phase: 24 Oct 10 thru 13 Dec 10
- Pre-Construction Phase: 14 Dec 10 thru 17 Jan 11
- Construction Phase: 18 Jan 11 thru 30 Nov 11
- Building Commissioning: 1 Dec 11 thru 16 Dec 11
- Move-In Phase: 17 Dec 11 thru 2 Jan 12
- School Opens: 3 Jan 12

Note: Delay Bidding Phase for Lee HS JROTC Facility until bids are received for both Knights Cross and Vineyard Ranch Elementary Schools in Sep and Oct 2010

Summary Presentation

Lee High School New JROTC Facility 2007 Bond Program



Questions?