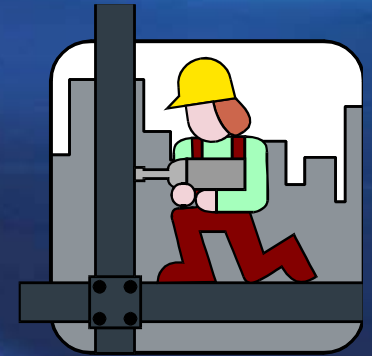




# Citizens Bond Advisory Committee (CBAC) Meeting Lee High School

## Program and Concept Review Presentation 2011 Bond Program



Jorge Cabello, Senior Director  
Construction Planning and Design

**June 21, 2012**



# Lee High School and ISA Campus





# Lee High School and ISA Campus





# Lee / ISA High School Design Program



## FINAL - 2011 BOND LEE / ISA HIGH SCHOOLS ADDITIONS AND RENOVATIONS PROGRAM - FINAL

I. JROTC FACILITY				
A.	General Classroom Instructional Program	Number	Sq. Ft.	Total Sq.Ft.
	1. JROTC Classrooms	2	785	1,570
	General Classroom Instructional Program Subtotal (sq.ft.) =		2 Classrooms	1,570
B.	JROTC Rifle Range	Number	Sq. Ft.	Total Sq.Ft.
	1. Rifle Range (16 Lane)	1	3,225	3,225
	2. Rifle Range Observation Area	1	1,040	1,040
	3. Rifle Range Public Restrooms (Mens and Womens)	2	200	400
	JROTC Rifle Range Program Subtotal (sq.ft.) =		16 Lane Rifle Range	4,665
C.	JROTC Support Areas	Number	Sq. Ft.	Total Sq.Ft.
	1. Arms Room Storage Area (Weapons)	1	125	125
	2. Arms Room Storage Area (Drill and Ceremony)	1	200	200
	3. Supply Room - Equipment	1	810	810
	4. Supply Room - Paper Products	1	40	40
	JROTC Support Areas Program Subtotal (sq.ft.) =		Support Areas	1,175
D.	JROTC Cadre Office Areas	Number	Sq. Ft.	Total Sq.Ft.
	1. SAI Office	1	225	225
	2. AAI Office	1	215	215
	3. Cadet Staff Office and Conference Area	1	825	825
	4. Cadet Staff Work Room	1	400	400
	5. Staff Restroom	1	130	130
	JROTC Cadre Office Areas Program Subtotal (sq.ft.) =		Cadre Office Areas	1,795
E.	JROTC Locker Room and Dressing Support Areas	Number	Sq. Ft.	Total Sq.Ft.
	1. Boys Locker Room, Dressing, Shower, and Restroom Area	1	700	700
	2. Girls Locker Room, Dressing, Shower, and Restroom Area	1	700	700
	JROTC Locker Room and Dressing Support Areas Program Subtotal (sq.ft.) =		Locker Room Areas	1,400
F.	MEP and Technology Support Areas	Number	Sq. Ft.	Total Sq.Ft.
	1. Mechanical / Electrical Room	1	520	520
	2. Custodial Wet Closet	1	40	40
	3. Sprinkler Riser Room	1	60	60
	4. IDF Room	1	50	50
	MEP and Technology Support Areas Program Subtotal (sq.ft.) =		MEP & Tech Support Areas	670
G.	Facility Net to Gross	Number	Sq. Ft.	Total Sq.Ft.
	1. Net to Gross Area (Includes Corridors, Circulation Space, and Wall Thicknesses)	1	3,075	3,075
	Facility Net to Gross Program Subtotal (sq.ft.) =		Net to Gross Area	3,075
H.	JROTC Marching Quadrangle	Number	Sq. Ft.	Total Sq.Ft.
	1. Construct JROTC Marching Quadrangle (110 ft x 110 ft)	1	12,100	12,100
	JROTC Marching Quadrangle Program Subtotal (sq.ft.) =			
TOTAL JROTC FACILITY PROGRAM		2 CLRM's & Rifle Range		14,350

# Lee / ISA High School Design Program



II. SCIENCE CLASSROOM FACILITY ADDITION				
A. ISA High School Science Classrooms (1st Floor)		Number	Sq. Ft.	Total Sq.Ft.
1.	Science Classroom (Lecture and Lab Area - 56 ft x 30 ft) - Lecture Area (26.5 ft x 30 ft) & Lab Area (29.5 ft x 30 ft) with 7 Lab Stations	6	1,680	10,080
2.	Standard Science Prep Room Area (56 ft x 9 ft) - Locate between 2 adjoining Science Classrooms)	2	504	1,008
3.	Main Science Prep Room and Chemical Storage Area (56 ft x 20 ft) - Locate between 2 adjoining Science Classrooms	1	1,120	1,120
4.	Teacher Resource Area with Faculty Restrooms (2 @ 48 sf each) and Storage Area (14 sf x 9 sf)	1	1,600	1,600
5.	Computer Lab (33 ft x 30 ft = 990 sf) with Adjacent Storage Area (90 sf)	1	1,080	1,080
6.	General Purpose Classrooms (32 ft x 25 ft each)	3	800	2,400
7.	Conference Room (20 ft x 20 ft)	1	400	400
8.	Mens and Womens Restrooms (20 ft x 14 ft for each Restroom Area)	2	265	530
9.	Computer Cart Storage and Charging Room (12 ft x 9 ft)	1	108	108
ISA High School Science Facility Addition Program Subtotal (sq.ft.) =				18,326
B. Lee High School Science Classrooms (2nd Floor)		Number	Sq. Ft.	Total Sq.Ft.
1.	Science Classroom (Lecture and Lab Area - 56 ft x 30 ft) - Lecture Area (26.5 ft x 30 ft) & Lab Area (29.5 ft x 30 ft) with 7 Lab Stations	8	1,680	13,440
2.	Standard Science Prep Room Area (56 ft x 9 ft) - Locate between 2 adjoining Science Classrooms)	3	504	1,512
3.	Main Science Prep Room and Chemical Storage Area (56 ft x 20 ft) - Locate between 2 adjoining Science Classrooms	1	1,120	1,120
4.	Teacher Resource Area with Faculty Restrooms (2 @ 48 sf each) and Storage Area (14 sf x 9 sf)	1	1,600	1,600
5.	Mens and Womens Restrooms (20 ft x 14 ft for each Restroom Area)	2	265	530
6.	Computer Cart Storage and Charging Room (12 ft x 9 ft)	1	108	108
Lee High School Science Facility Addition Program Subtotal (sq.ft.) =				18,310
C. MEP and Technology Support Areas		Number	Sq. Ft.	Total Sq.Ft.
1.	Mechanical Rooms (50 ft x 30 ft)	2	1,500	3,000
2.	Electrical Rooms (16 ft x 16 ft)	2	256	512
3.	IDF Room (10 ft x 10 ft)	1	100	100
4.	Elevator and Machine Room (~ 7.5 ft x 7 ft each)	1	104	104
5.	Fire Riser Room (10 ft x 5ft)	1	50	50
6.	Custodial Wet Closets (1 Per Floor)	2	50	100
MEP and Technology Support Areas Program Subtotal (sq.ft.) =				3,866
D. Facility Net to Gross		Number	Sq. Ft.	Total Sq.Ft.
1.	Net to Gross Area (Includes Cooridors, Circulation Space, and Wall Thicknesses)	1	12,998	12,998
Facility Net to Gross Program Subtotal (sq.ft.) =		Net to Gross Area		12,998
TOTAL LEE AND ISA HIGH SCHOOL SCIENCE FACILITY ADDITION PROGRAM		14 Labs and 4 CLRMs		53,500
III. ISA HIGH SCHOOL FACILITY RENOVATIONS (BUILDING 100)				
A. Classroom Area and Technology Upgrades		Number	Sq. Ft.	Total Sq.Ft.
1.	Upgrade ClassroomTechnology Systems in ISA Main Building (~ 40 Classrooms) to Classrroom of the Future Standards	1	55,000	55,000
2.	Renovate Interior Classroom Areas (Painting, Lighting and Ceilings)			
3.	Replace all Chalk Boards with Dry-Erase Marker Boards or Smart Boards (Meet Instructional and Program Specific Requirements)			
4.	Renovate Restroom Areas (8 Restrooms - 4 per Floor)			
5.	Renovate Administrative Office Areas			
ISA High School Facility Renovations (Building 100) Program Subtotal (sq.ft.) =				55,000
TOTAL ISA HIGH SCHOOL FACILITY RENOVATIONS (BUILDING 100) PROGRAM				55,000

# Lee / ISA High School Design Program



IV. ATHLETIC / PHYSICAL EDUCATION FACILITY ADDITION				
A. Athletic / Physical Education Support Facilities		Number	Sq. Ft.	Total Sq.Ft.
1. Team Rooms 1 and 2 with Moveable Wall Divider (~ 48 ft x 42 ft)		1	2,016	2,016
2. Team Room Storage Areas (22.5 ft x 10 ft)		2	225	450
3. Film Workroom (16 ft x 18 ft)		1	288	288
4. Weight Room (58 ft x 56 ft)		1	3,248	3,248
5. Weight Room Storage (20 ft x 18 ft)		1	360	360
6. Training Room (60 ft x 26 ft) - Includes 4 Stations with Table and Millwork and Ice Machine & Wet Area (16 ft x 14 ft) with 3 Whirlpools		1	1,560	1,560
7. Trainer Office (12.5 ft x 12 ft)		1	150	150
8. Training Storage (22 ft x 9 ft)		1	198	198
9. Laundry Room (22 ft x 18 ft) includes hook-ups for 4 Commercial Washers and 4 Commercial Dryers		1	396	396
10. Athletic Coordinator Office and Conference Room (24 ft x 19 ft)		1	456	456
11. Girl's Coaches Offices (30 x 20 ft) - 10 Coaches each with a 5 ft Work Counter plus Millwork		1	600	600
12. Girl's Coaches Dressing (30 x 14 ft) - 3 Showers and 3 Fixtures		1	420	420
13. Boy's Coaches Offices (35 ft x 20 ft) - 12 Coaches each with a 5 ft Work Counter plus Millwork		1	700	700
14. Boy's Coaches Dressing (30 x 16 ft) - 3 Showers and 3 Fixtures		1	480	480
15. Physical Education Offices (28 ft x 20 ft) - 6 Total Stations with 5 ft Work Counter plus Millwork, Dressing Area, Shower & Restroom		2	560	1,120
16. Main Gym Storage Area (25 ft x 22 ft) - Locate Adjacent to Main Gym		1	550	550
17. Auxiliary Gym Storage Area (20 ft x 20 ft) - Locate Adjacent to Auxiliary Gym		1	400	400
Athletic / Physical Education Support Facilities Program Subtotal (sq.ft.) =				13,392
B. Girl's Athletics and Physical Education Program		Number	Sq. Ft.	Total Sq.Ft.
1. Girls's Athletic Locker Room (22 ft x 12 ft) with 60 Cages and Storage Area (8 ft x 12 ft) with Modular Storage System		6	360	2,160
2. Girl's Dressing and Shower Area (18 ft x 14 ft) includes 8 Individual Showers, 1 ADA Shower, and Shower Room with 6 Fixtures		1	252	252
3. Girl's Restroom Area (18 ft x 16 ft) includes 5 Water Closets and 2 Lavatories with 5 Hand Washing Stations		1	288	288
4. Girl's PE Locker Room (36 ft x 18 ft) with 540 Lockers		1	648	648
Girl's Athletics and Physical Education Program Subtotal (sq.ft.) =				3,348
C. Boy's Athletics and Physical Education Program		Number	Sq. Ft.	Total Sq.Ft.
1. Boy's Athletic Locker Room (22 ft x 12 ft) with 60 Cages and Storage Area (8 ft x 12 ft) with Modular Storage System		5	360	1,800
2. Boy's Dressing and Shower Area (18 ft x 14 ft) includes Shower Room (18 Fixtures) and 1 ADA Shower		1	252	252
3. Boy's Restroom Area (18 ft x 16 ft) includes 2 Water Closets, 3 Urinals, and 2 Lavatories with 5 Hand Washing Stations		1	288	288
4. Boy's PE Locker Room (36 ft x 18 ft) with 540 Lockers		1	648	648
Boy's Athletics and Physical Education Program Subtotal (sq.ft.) =				2,988
D. Football Program		Number	Sq. Ft.	Total Sq.Ft.
1. Varsity Football Locker Cage Area (48 ft x 25 ft) with 80 Varsity Football Lockers		1	1,200	1,200
2. Junior Varsity Football Locker Cage Area (32 ft x 32 ft) with 90 JV Lockers @ 24"W x 15"D x 72"H		1	1,024	1,024
3. Freshman Football Locker Cage Area with (32 ft x 32 ft) with 125 Freshman Lockers @ 24"W x 15"D x 36"H		1	1,024	1,024
4. Football Dressing and Shower Area (35 ft x 22 ft) includes 18 Wall-Mounted Fixtures and 2 Shower Towers (4 Fixtures Each)		1	770	770
5. Football Restroom Area with (20 ft x 18 ft) includes 3 Water Closets, 3 Urinals, and 2 Lavatories with 6 Hand Washing Stations		1	360	360
6. Football Storage Area (62 ft x 24 ft) with Ice Machines and Modular Storage System		1	1,488	1,488
Football Program Subtotal (sq.ft.) =				5,866

# Lee / ISA High School Design Program

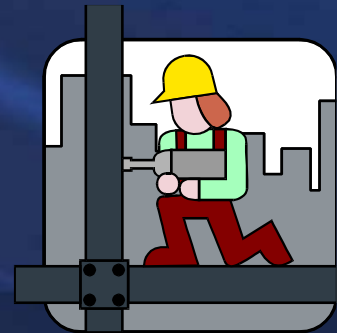


E. MEP & Technology Support Areas		Number	Sq. Ft.	Total Sq.Ft.
1.	Central Plant	1	3,000	3,000
2.	Mechanical Rooms	1	5,000	5,000
3.	Electrical Rooms (16 ft x 16 ft)	2	256	512
4.	Fire Riser Room (10 ft x 5ft)	1	50	50
5.	IDF Room (10 ft x 10 ft)	1	100	100
6.	Custodial Wet Closets	2	50	100
MEP & Technology Support Areas Program Subtotal (sq.ft.) =				8,762
F. Facility Net to Gross		Number	Sq. Ft.	Total Sq.Ft.
1.	Net to Gross Area (Includes Corridors, Circulation Space, and Wall Thicknesses)	1	10,644	10,644
Facility Net to Gross Program Subtotal (sq.ft.) =			Net to Gross Area	10,644
G. Renovate Athletic Area below Main West Side Gym Bleachers		Number	Sq. Ft.	Total Sq.Ft.
1.	Renovate Athletic Area below Main West Side Bym Bleachers	1	2,500	2,500
Facility Net to Gross Program Subtotal (sq.ft.) =				2,500
TOTAL ATHLETIC AND PHYSICAL EDUCATION FACILITY ADDITION				47,500
H. Outdoor Concession and Restroom Building		Number	Sq. Ft.	Total Sq.Ft.
1.	Concession Stand	1	235	235
2.	Concession Storage	1	100	100
3.	Mens Restroom	1	260	260
4.	Womens Restroom	1	260	260
5.	Net to Gross Area (Includes Wall Thicknesses)	1	320	320
Outdoor Concession and Restroom Building Subtotal (sq.ft.) =				1,175
TOTAL OUTDOOR CONCESSION AND RESTROOM BUILDING				1,175
V. TENNIS COURTS REPLACEMENT		Number	Sq. Ft.	Total Sq.Ft.
1.	Replace 6 Tennis Courts (300 ft x 120 ft) - Construct on Roof of New Athletic / Physical Education Facility)	1	36,000	36,000
2.	Spectator Seating Area at Center Court	1	4,000	4,000
3.	Outdoor Storage Building (10 ft x 15 ft)	1	150	150
TOTAL TENNIS COURTS REPLACEMENT PROGRAM				40,000
VI. CAMPUS ENTRANCE UPGRADES & IMPROVEMENTS / AUDITORIUM LOBBY ADDITION AND FACILITY DEMOLITION				
A. Campus Entrance / Courtyard Upgrades and Improvements and Auditorium Lobby Addition		Number	Sq. Ft.	Total Sq.Ft.
1.	Construct Campus Entrance/Courtyard between Lee Academic/JROTC Facilities and Fine Arts Facility	1	30,000	30,000
2.	Construct Secondary Entrance and Lobby Area with Concession Stand for the Lee / ISA / NESA Theater	1	6,500	6,500
Campus Entrance/Courtyard Upgrades and Improvements and Auditorium Lobby Addition Program Subtotal (sq.ft.) =				36,500
B. Lee High School Facility Demolition to Support New Bond Program Construction		Number	Sq. Ft.	Total Sq.Ft.
1.	Demolish Old Lee Bunker Academic Facility	1	12,100	12,100
2.	Demolish Old JROTC Building	1	5,000	5,000
3.	Demolish Old Science Building	1	21,400	21,400
4.	Demolish Old Cosmetology Building	1	9,500	9,500
5.	Demolish Old Boy's Athletics and Athletic Support Areas	1	13,500	13,500
Campus Entrance / Courtyard Upgrades and Improvements and Auditorium Lobby Addition Program Subtotal (sq.ft.) =				61,500
TOTAL CAMPUS ENTRANCE UPGRADES & IMPROVEMENTS / AUDITORIUM LOBBY ADDITION AND FACILITY DEMOLITION				98,000

# Design & Construction Process

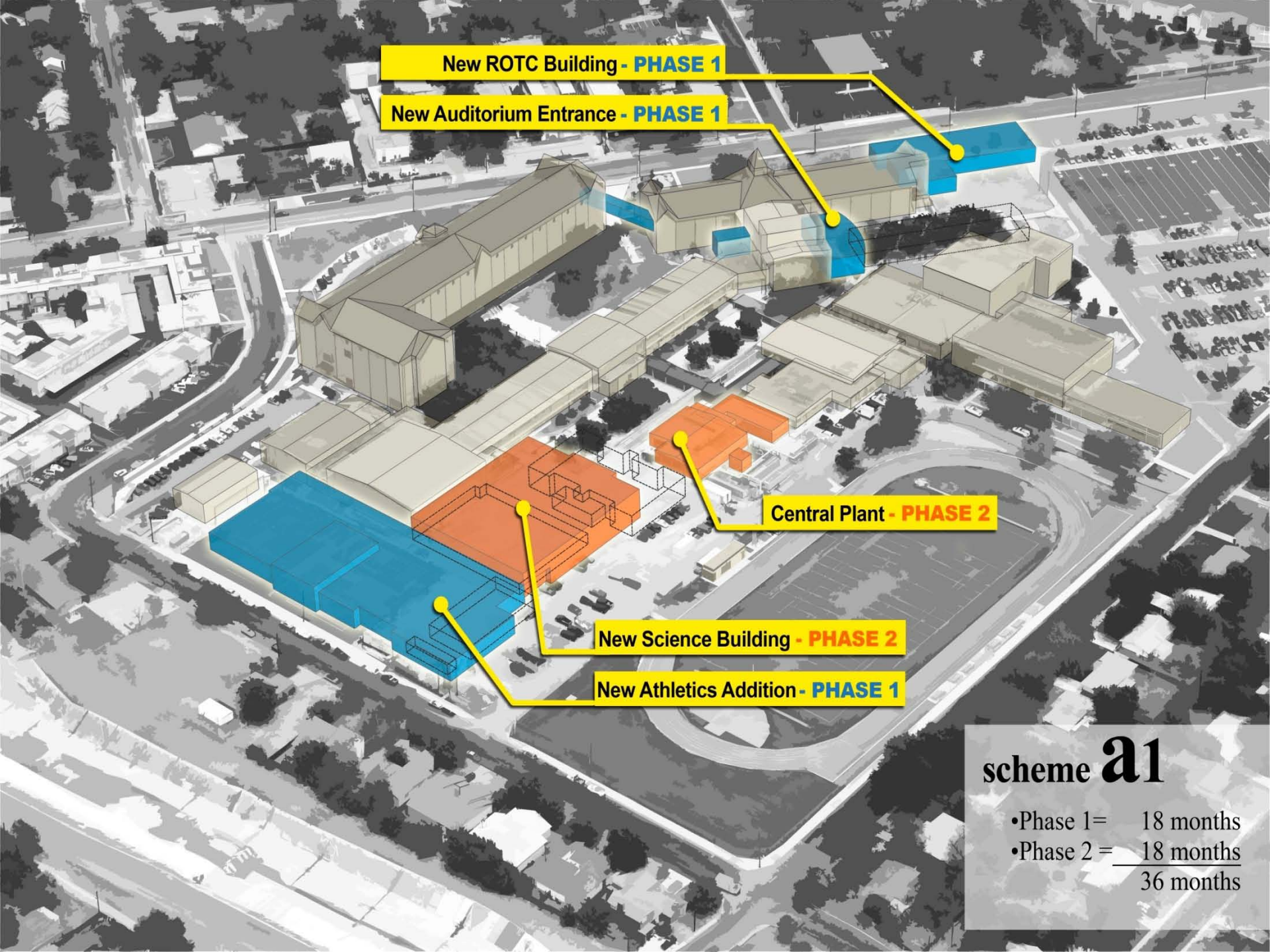
---

1. Issue Design Contract to A/E (\*)
- 2. Concept Formulation for Project**
3. Schematic Design Phase (\*)
4. Design Development Phase
5. Construction Document Development Phase (\*)
6. Bidding Phase
7. Construction Contract Award Phase (\*)
8. Construction Phase
9. Warranty Phase
10. Project Complete (\*)



(\*) Indicates Board Action





New ROTC Building - **PHASE 1**

New Auditorium Entrance - **PHASE 1**

Central Plant - **PHASE 2**

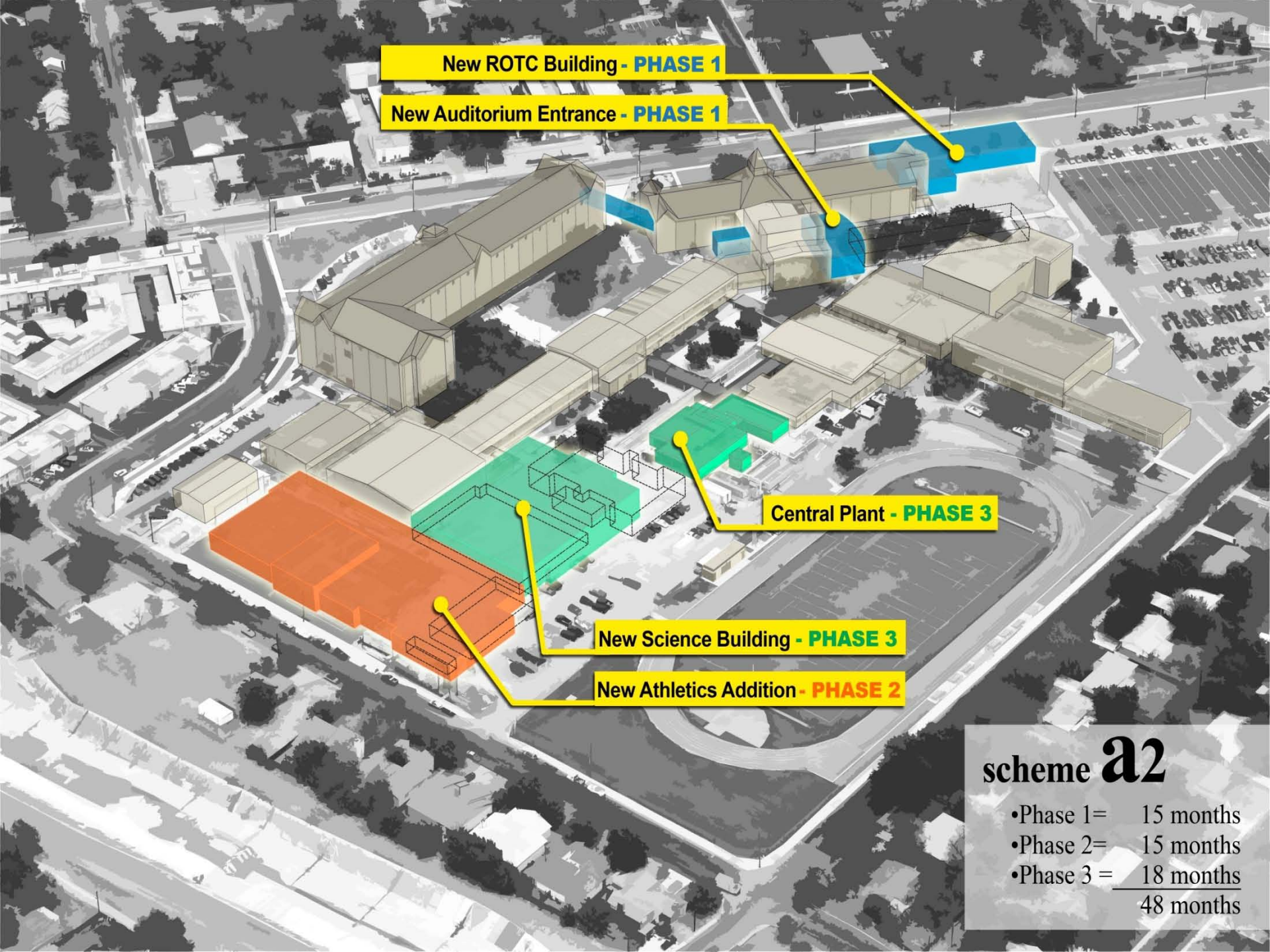
New Science Building - **PHASE 2**

New Athletics Addition - **PHASE 1**

scheme **a1**

•Phase 1= 18 months  
•Phase 2= 18 months  
36 months





New ROTC Building - **PHASE 1**

New Auditorium Entrance - **PHASE 1**

Central Plant - **PHASE 3**

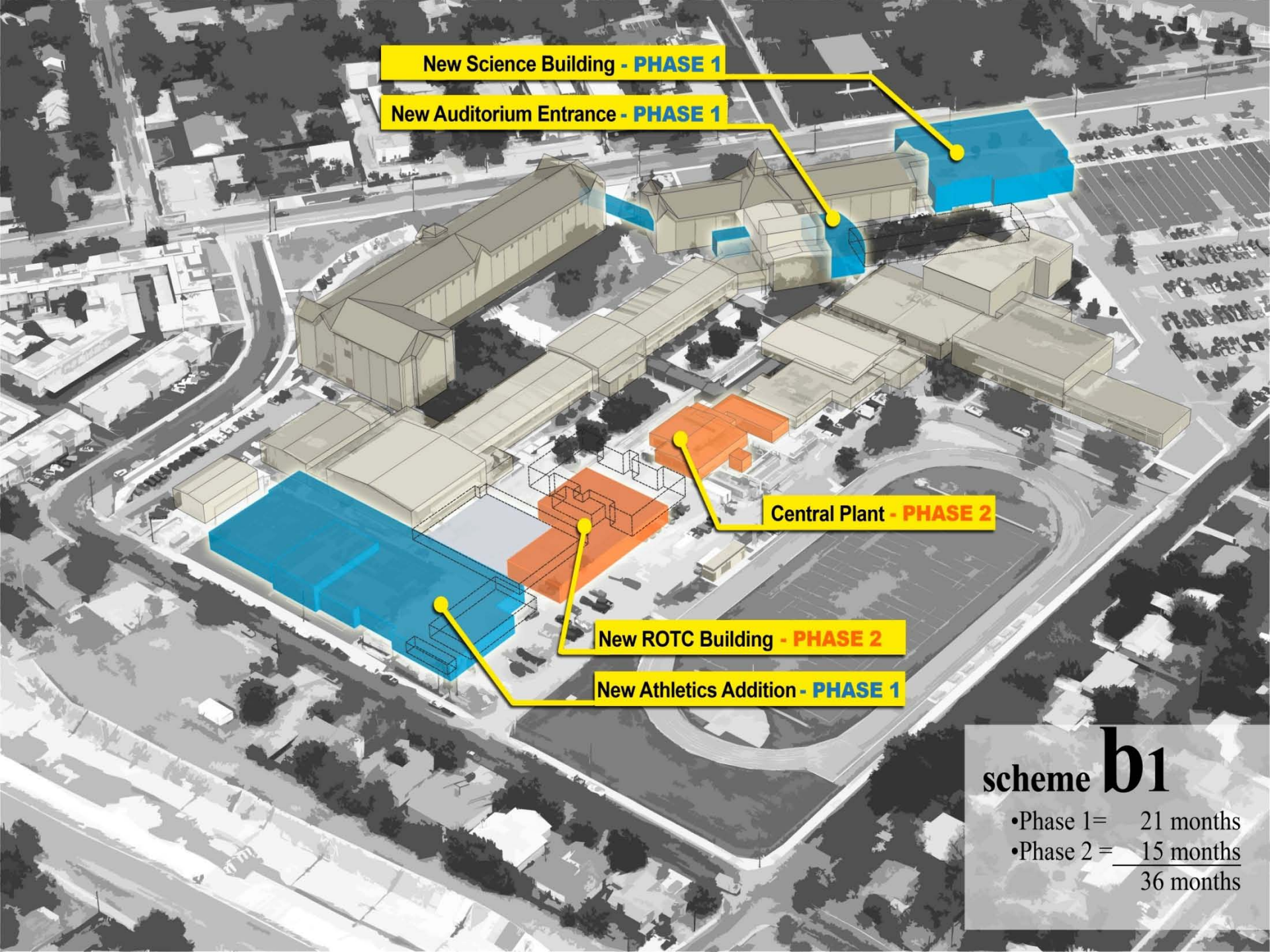
New Science Building - **PHASE 3**

New Athletics Addition - **PHASE 2**

scheme **a2**

- Phase 1= 15 months
  - Phase 2= 15 months
  - Phase 3 = 18 months
- 
- 48 months





New Science Building - **PHASE 1**

New Auditorium Entrance - **PHASE 1**

Central Plant - **PHASE 2**

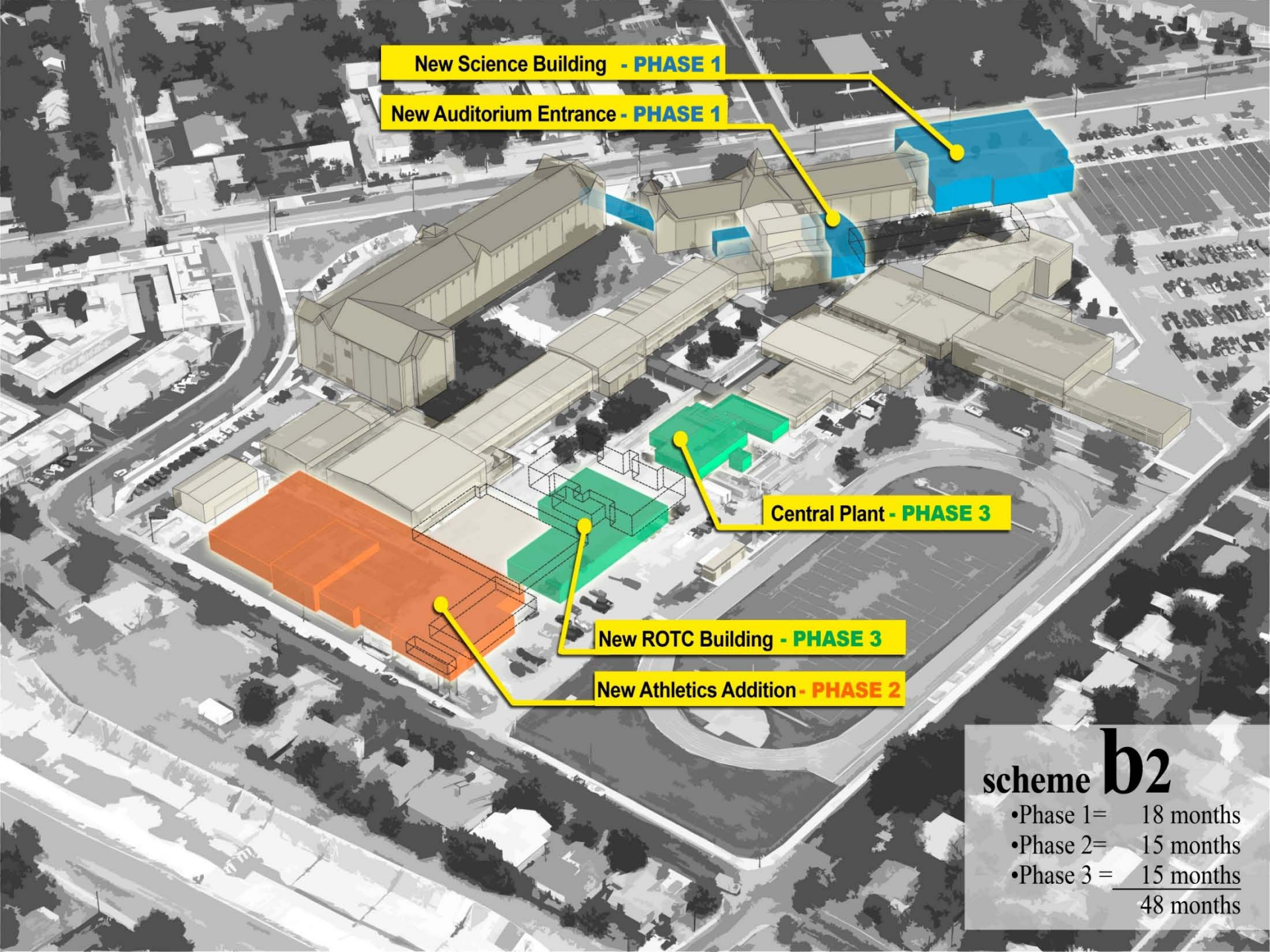
New ROTC Building - **PHASE 2**

New Athletics Addition - **PHASE 1**

scheme **b1**

•Phase 1= 21 months  
•Phase 2= 15 months  
36 months





New Science Building - **PHASE 1**

New Auditorium Entrance - **PHASE 1**

Central Plant - **PHASE 3**

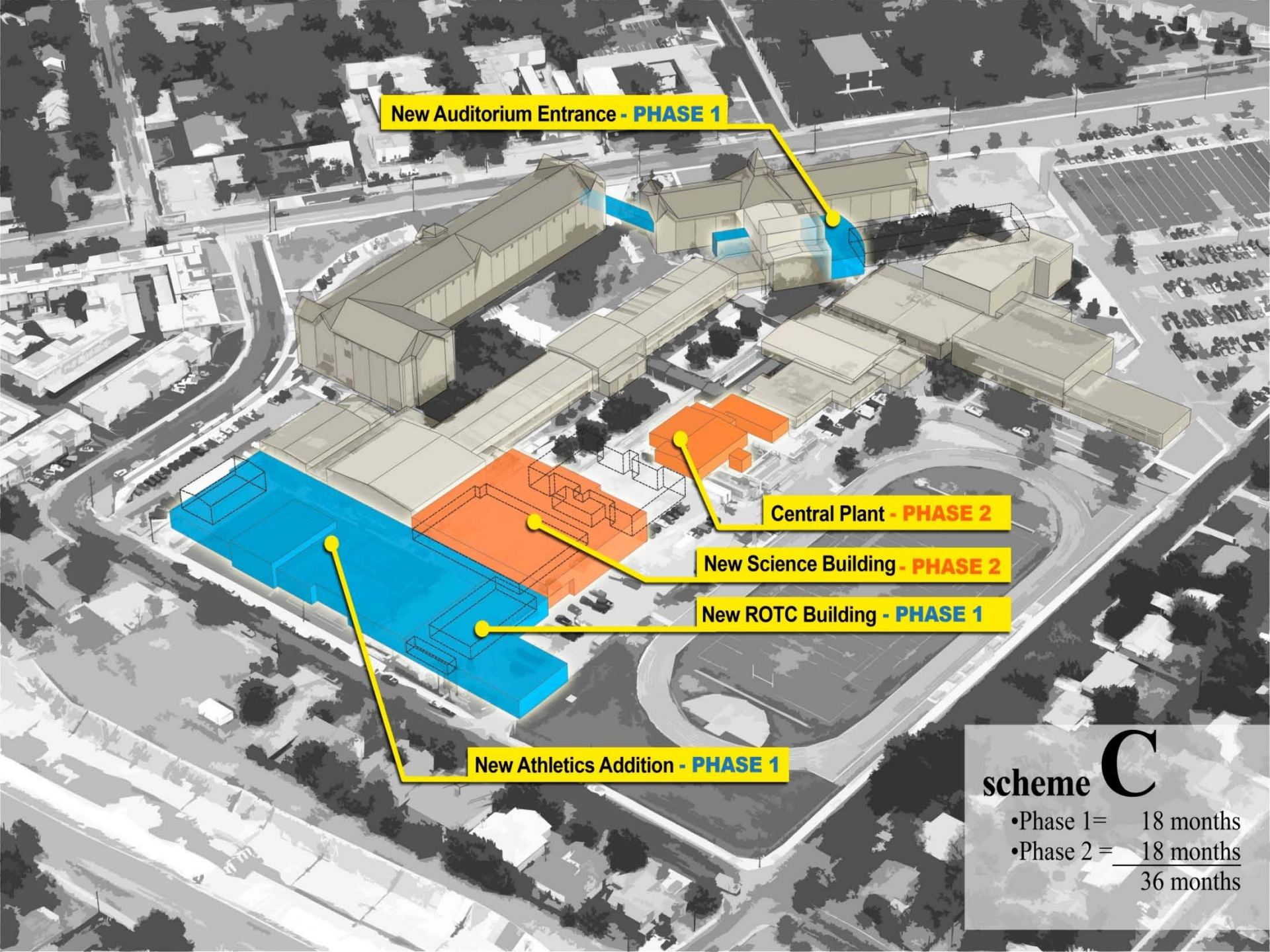
New ROTC Building - **PHASE 3**

New Athletics Addition - **PHASE 2**

scheme **b2**

- Phase 1= 18 months
  - Phase 2= 15 months
  - Phase 3= 15 months
- 
- 48 months





New Auditorium Entrance - **PHASE 1**

Central Plant - **PHASE 2**

New Science Building - **PHASE 2**

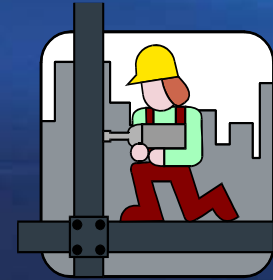
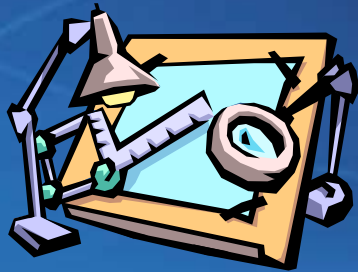
New ROTC Building - **PHASE 1**

New Athletics Addition - **PHASE 1**

scheme **C**

•Phase 1= 18 months  
•Phase 2= 18 months  
36 months

**Citizens Bond Advisory Committee (CBAC) Meeting  
Lee High School  
Program and Concept Review Presentation  
2011 Bond Program**



**Questions**