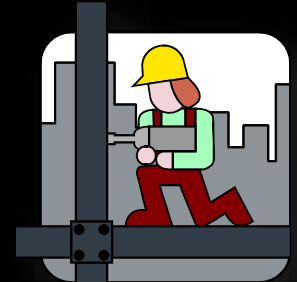




# Lee High School CTE & STEM Facilities Schematic Design Presentation 2015 Bond Program



Garrett J. Sullivan, Executive Director  
Construction Management and Engineering Department

September 12, 2016

# Schematic Design Presentation Agenda

- Project Design Team
- Program Review
- Project Site Analysis
- Concept Design Plans
- Budget Review
- Project Phasing Plan
- Schedule Review
- Staff Recommendation



# Lee High School Project Design Team

---

- Architect: Pfluger Architects
- MEP Engineer: MEP Engineering
- Structural Engineer: Danysh & Associates
- Civil Engineer: MTR Engineers
- Roofing Engineer: Wiss, Janey, Elstner & Associates
- Technology Engineer: Combs Consulting Group
- Fire Protection/Building Code Engineer: Protection Development, Inc.
- Landscape Architect: Cooper-Lochte Landscape Architects
- Food Service Engineer: Roberts Simpson & Associates
- Acoustical Engineer: BAI
- Geotechnical & Material Testing: Raba-Kistner Consultants
- Test, Balance, and Commissioning: Energy Testing and Balance





# Lee High School Site Aerial (Sep 2016)



Campus Site Aerial (Sep 2016)

Lee High School  
North East ISD



# 2015 Bond Program Review for Lee High School CTE & STEM Facilities

---

- Renovate Old Science Building into CTE & STEM Facilities
- Renovate Home Economics into CTE Culinary Arts Facility
- Renovate Lee HS Dance Facility into STEM Robotics Lab
- Renovate Lee HS Teacher Workroom into STEM Faculty Offices (3<sup>rd</sup> Floor of Building M100)

# 2015 Bond Program Review for Lee High School

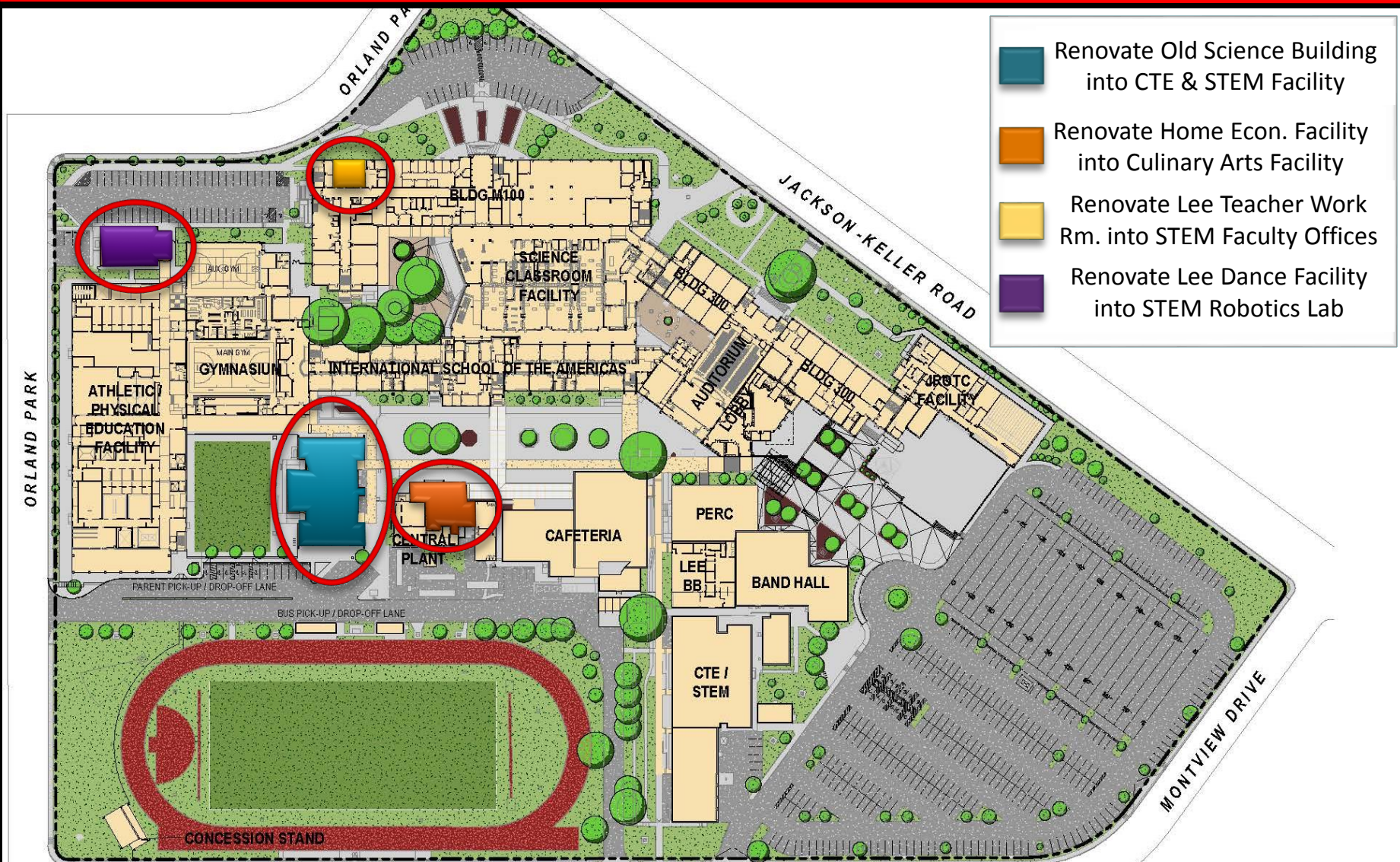
## CTE & STEM Facilities

---

1. **Renovate Old Science Facility into a CTE & STEM Program Facility (23,030 sq. ft.)**
  - a. CTE Business Marketing Education Program
  - b. CTE Family & Consumer Science Program
  - c. CTE Health Science Program
  - d. CTE Technology Education Program
  - e. CTE Criminal Justice Program
  - f. CTE Cosmetology Program (New to Campus)
  - g. STEM Technology Program
  - h. CTE/STEM Teacher Resource Areas including: 2 Workrooms (1 per Floor) with Teacher Work Stations, Storage Areas, and Faculty Restrooms
2. **Renovate Home Economics Facility into a CTE Culinary Arts Facility (3,640 sq. ft.)**
  - a. CTE Culinary Arts Classroom & Dining Area
  - b. CTE Culinary Arts Kitchen Area
  - c. CTE Culinary Arts Pantry & Equipment Storage Area
  - d. CTE Culinary Arts Office
3. **Renovate Lee HS Dance Facility into a STEM Robotics Lab (4,230 sq. ft.)**
4. **Renovate Lee HS Teacher Workroom into STEM Faculty Offices**



# Lee High School Project Site Analysis

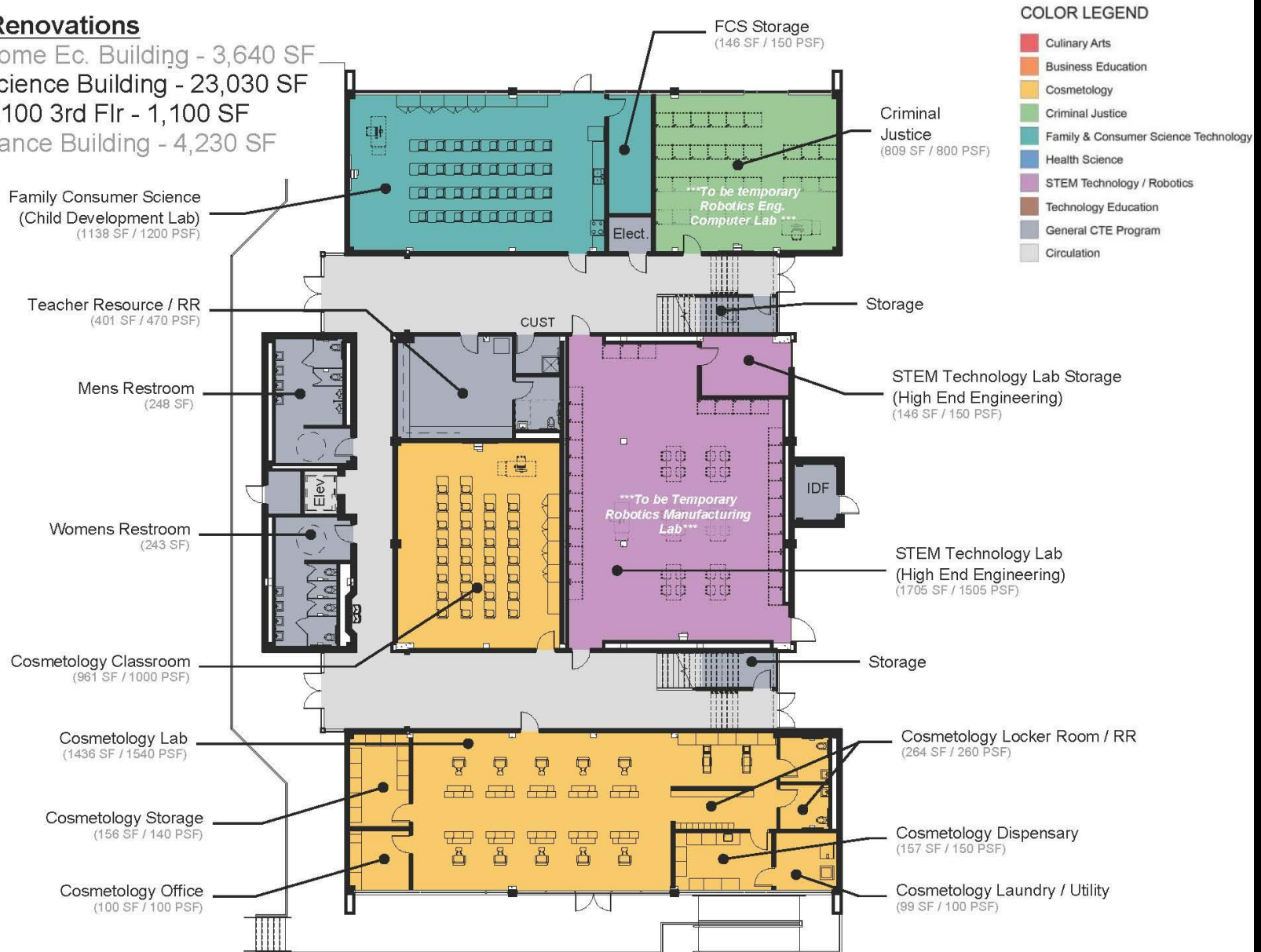


# Lee HS CTE and STEM Facility (Old Science Building)

## CTE & STEM Renovations

- Renovated Home Ec. Building - 3,640 SF
- Renovated Science Building - 23,030 SF
- Renovated M100 3rd Flr - 1,100 SF
- Renovated Dance Building - 4,230 SF

## 1st Floor Plan



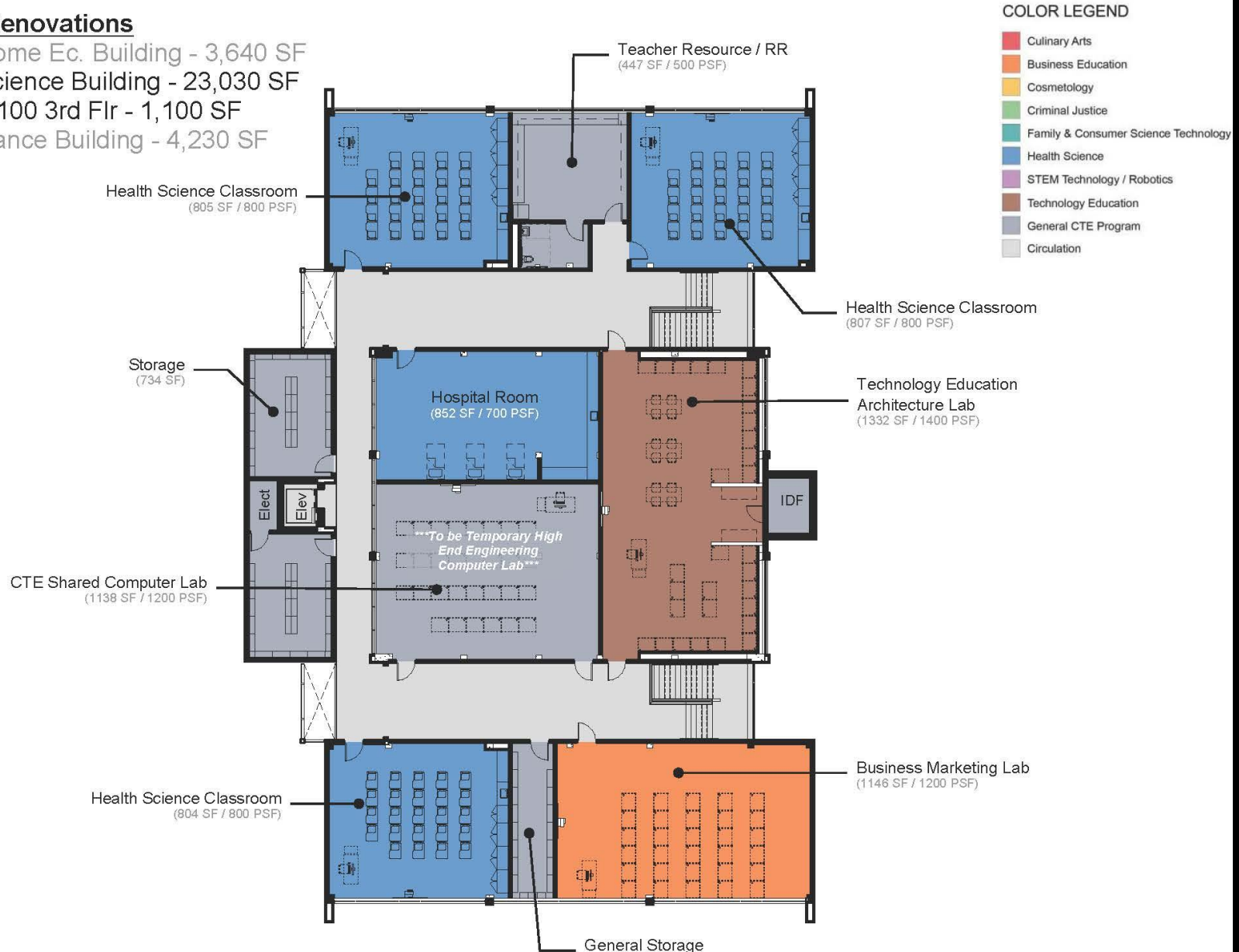


# Lee HS CTE and STEM Facility (Old Science Building)

## CTE & STEM Renovations

- Renovated Home Ec. Building - 3,640 SF
- Renovated Science Building - 23,030 SF
- Renovated M100 3rd Flr - 1,100 SF
- Renovated Dance Building - 4,230 SF

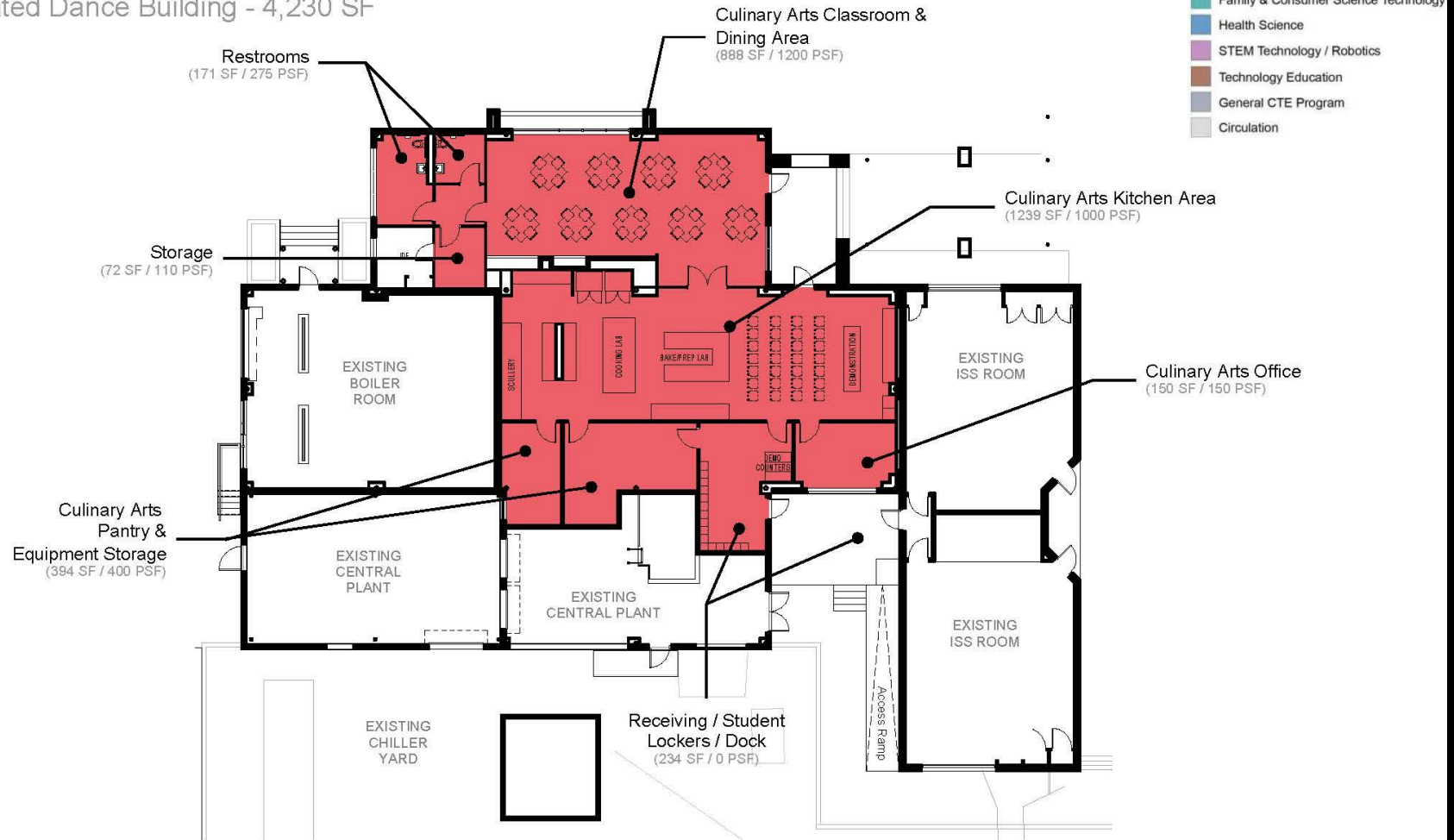
## 2nd Floor Plan



# Lee HS CTE Culinary Arts Facility (Home Econ. Building)

## CTE & STEM Renovations

- Renovated Home Ec. Building - 3,640 SF
- Renovated Science Building - 23,030 SF
- Renovated M100 3rd Flr - 1,100 SF
- Renovated Dance Building - 4,230 SF





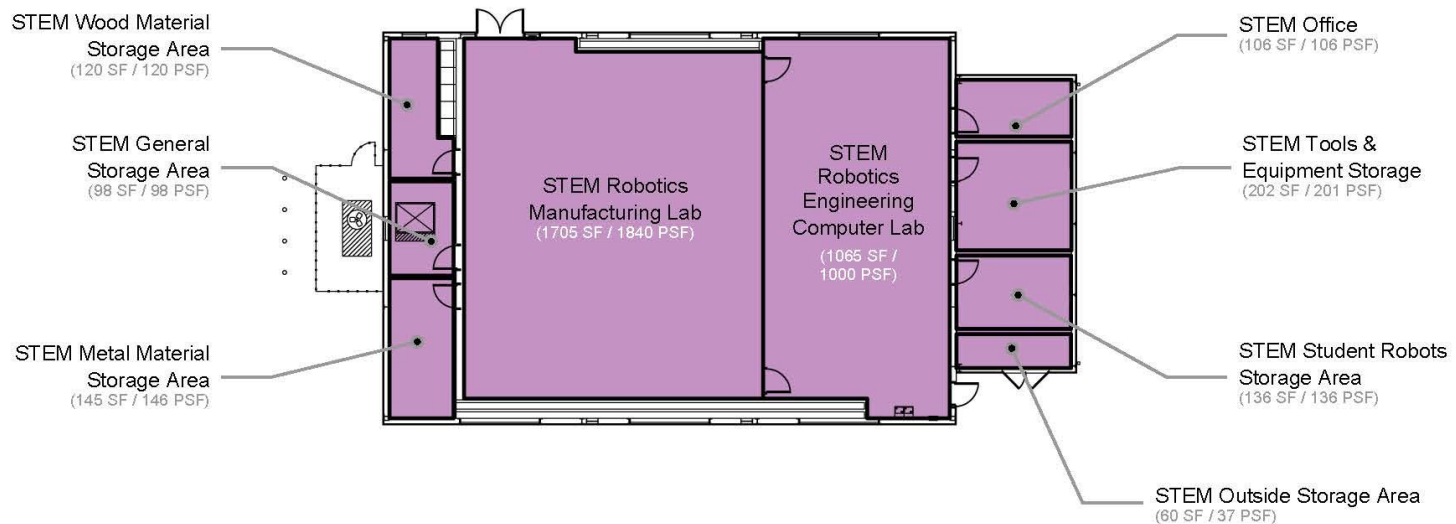
# Lee HS STEM Robotics Lab (Lee HS Dance Facility)

## CTE & STEM Renovations

- Renovated Home Ec. Building - 3,640 SF
- Renovated Science Building - 23,030 SF
- Renovated M100 3rd Flr - 1,100 SF
- Renovated Dance Building - 4,230 SF

### COLOR LEGEND

|  |                                      |
|--|--------------------------------------|
| <span style="color: red;">■</span>       | Culinary Arts                        |
| <span style="color: orange;">■</span>    | Business Education                   |
| <span style="color: yellow;">■</span>    | Cosmetology                          |
| <span style="color: green;">■</span>     | Criminal Justice                     |
| <span style="color: teal;">■</span>      | Family & Consumer Science Technology |
| <span style="color: blue;">■</span>      | Health Science                       |
| <span style="color: purple;">■</span>    | STEM Technology / Robotics           |
| <span style="color: brown;">■</span>     | Technology Education                 |
| <span style="color: grey;">■</span>      | General CTE Program                  |
| <span style="color: lightgrey;">■</span> | Circulation                          |



# CTE & STEM Facility Perspective (Old Science Bldg.)

---



**CTE & STEM Facility Perspective (Old Science Bldg.)**

*Lee High School  
North East ISD*

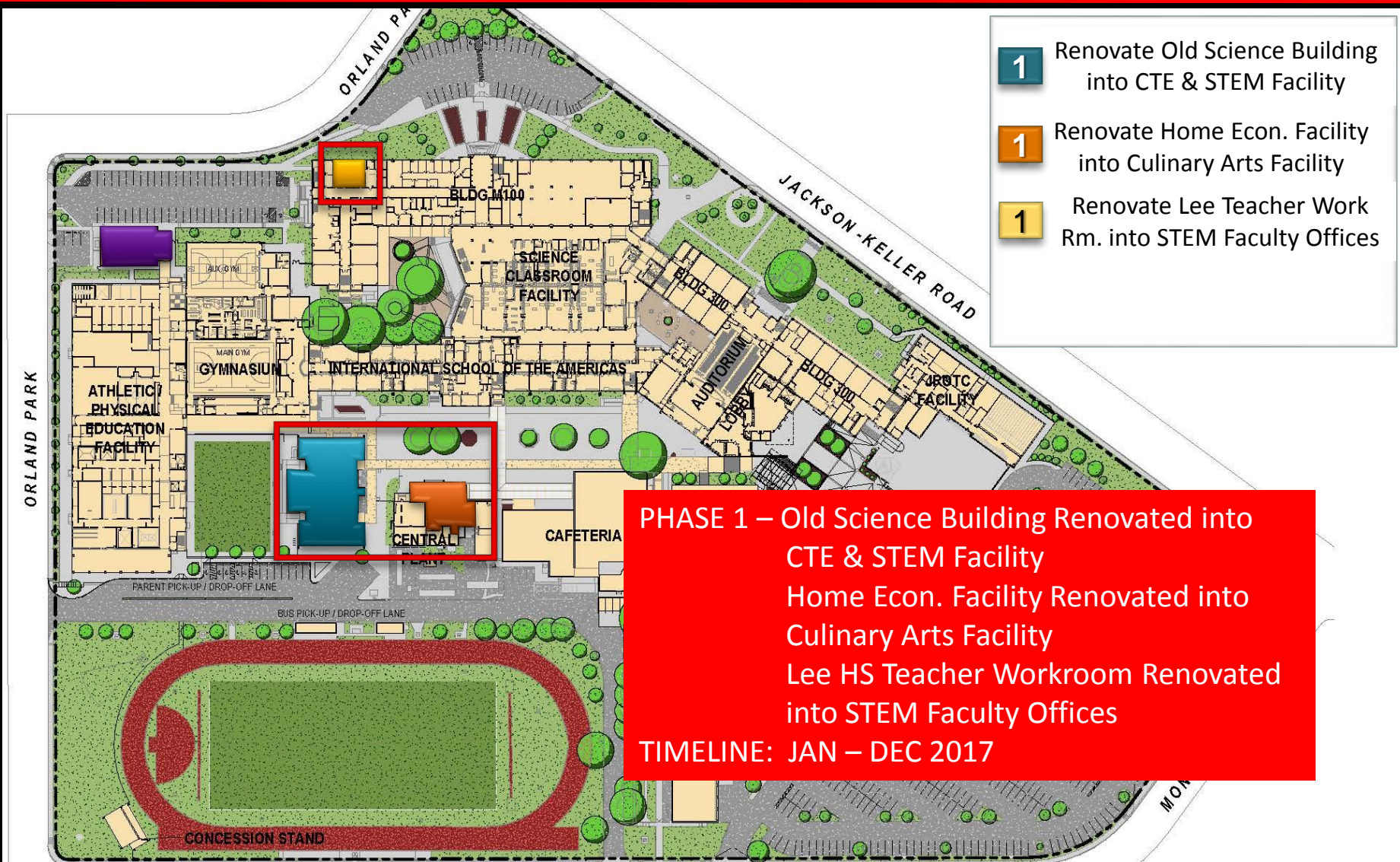


# 2015 Bond Budget Review for Lee High School CTE & STEM Project

---

|                         |                   |
|-------------------------|-------------------|
| • Design Account:       | \$ 800,000        |
| • Construction Account: | \$ 6,000,000      |
| • Technology Account:   | \$ 50,000         |
| • FF&E Account:         | <u>\$ 150,000</u> |
| TOTAL BOND PROGRAM =    | \$ 7,000,000      |

# Lee HS CTE & STEM Facilities Phasing Plan (Phase 1)



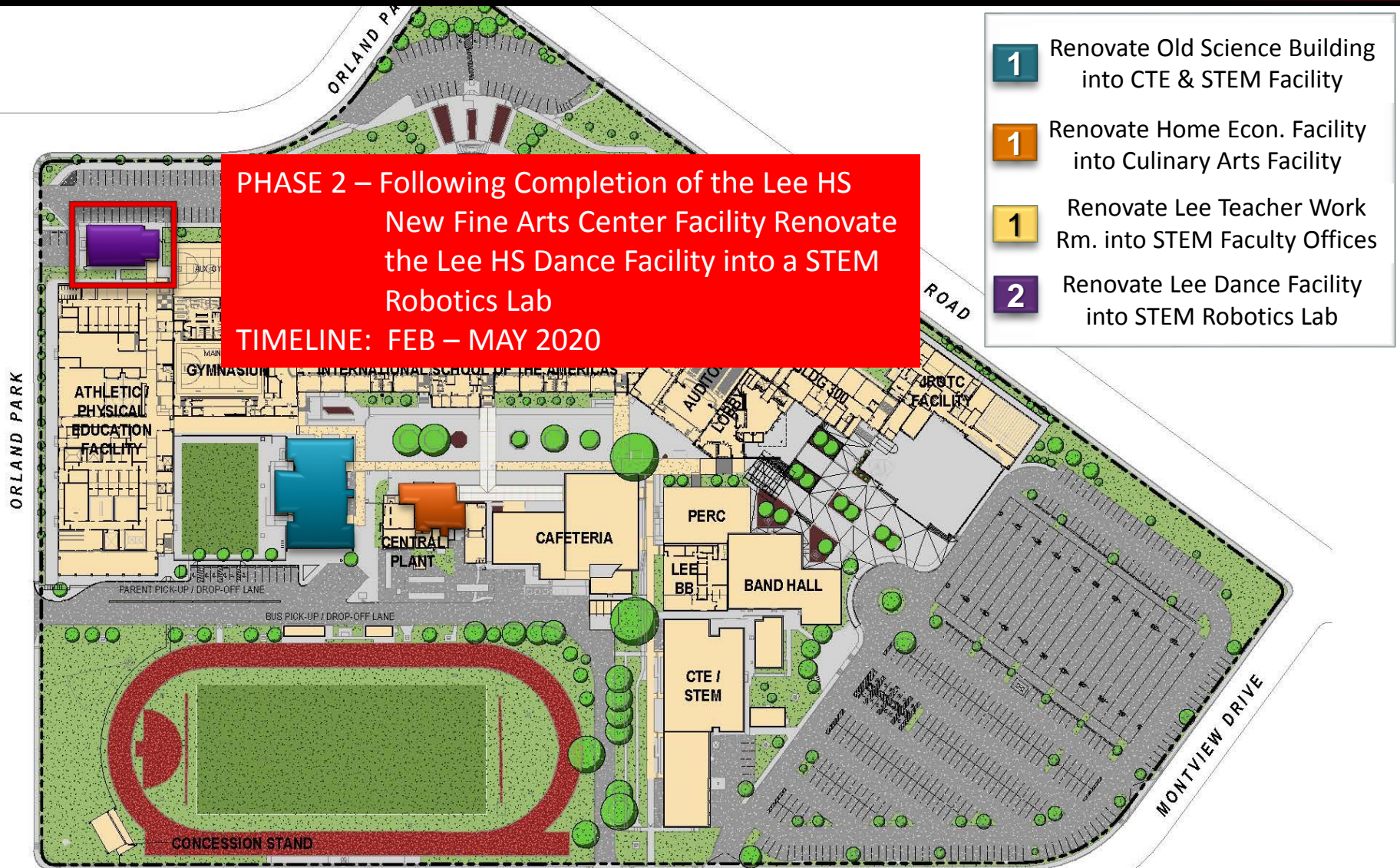


# Lee HS CTE & STEM Facilities Phasing Plan (Phase 2)

**PHASE 2 – Following Completion of the Lee HS New Fine Arts Center Facility Renovate the Lee HS Dance Facility into a STEM Robotics Lab**

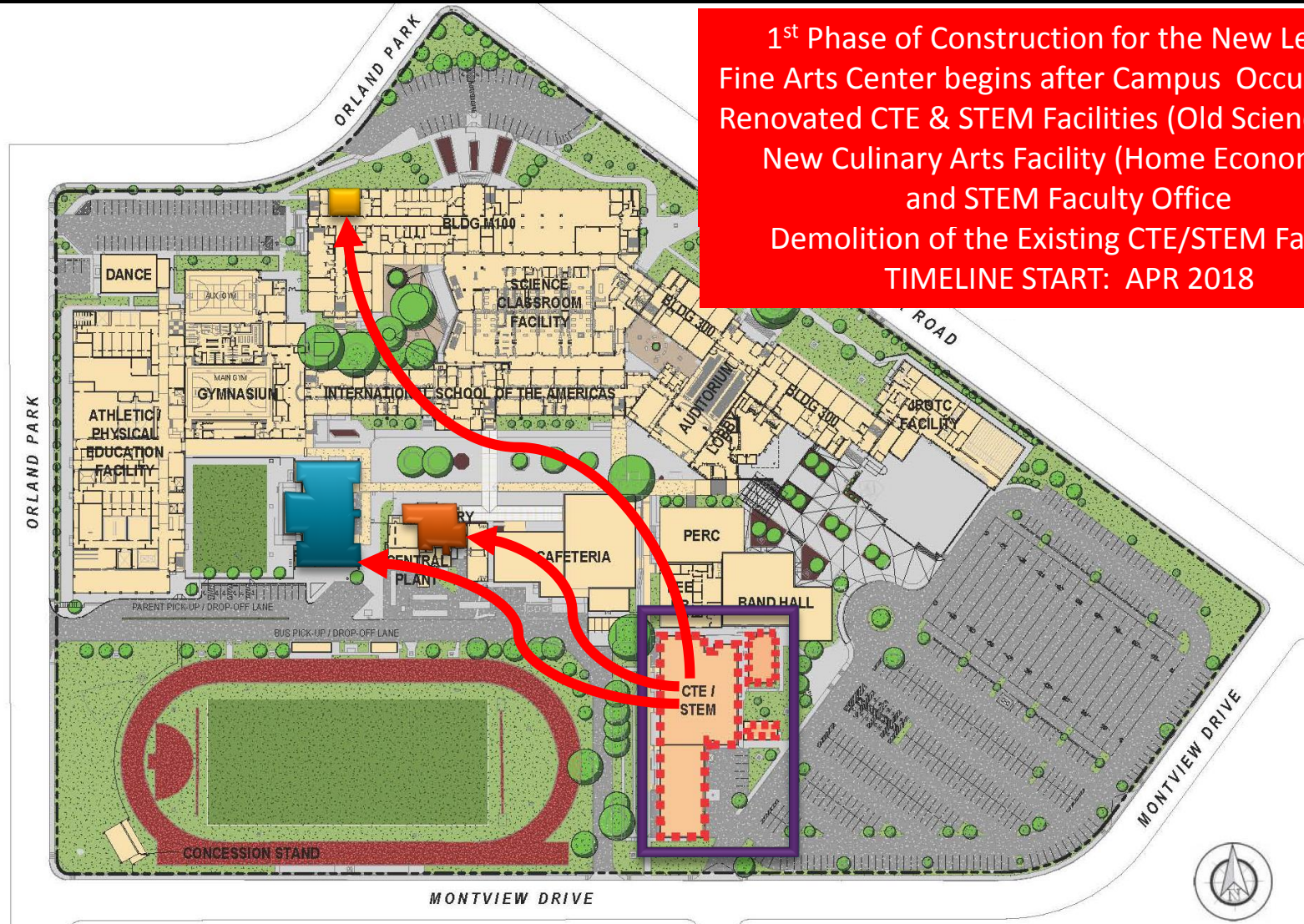
**TIMELINE: FEB – MAY 2020**

- 1** Renovate Old Science Building into CTE & STEM Facility
- 1** Renovate Home Econ. Facility into Culinary Arts Facility
- 1** Renovate Lee Teacher Work Rm. into STEM Faculty Offices
- 2** Renovate Lee Dance Facility into STEM Robotics Lab





# New Lee HS Fine Arts Center Phasing Plan

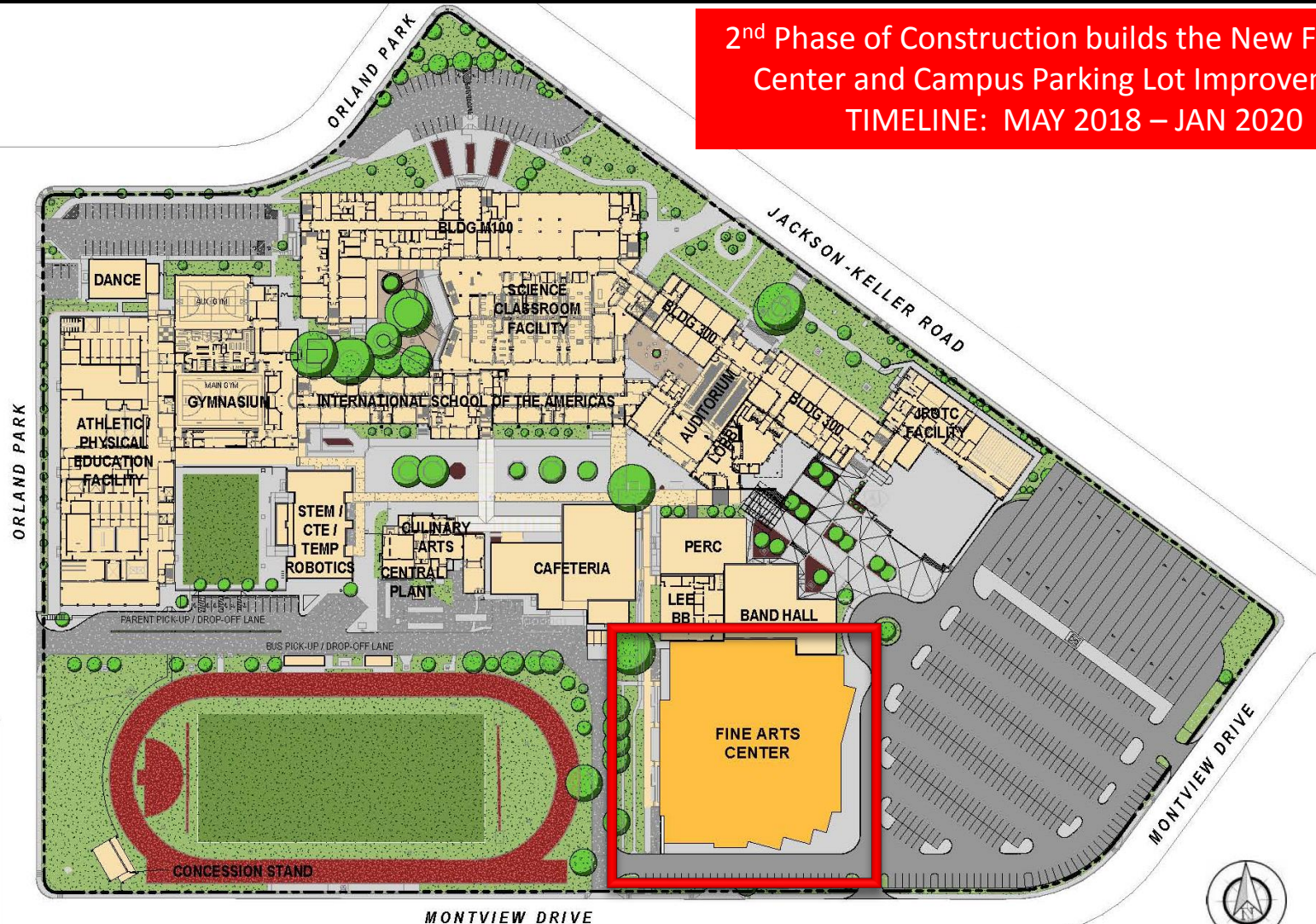


1<sup>st</sup> Phase of Construction for the New Lee HS Fine Arts Center begins after Campus Occupancy of Renovated CTE & STEM Facilities (Old Science Bldg), New Culinary Arts Facility (Home Economics), and STEM Faculty Office  
Demolition of the Existing CTE/STEM Facility  
**TIMELINE START: APR 2018**



# New Lee HS Fine Arts Center Phasing Plan

2<sup>nd</sup> Phase of Construction builds the New Fine Arts Center and Campus Parking Lot Improvements  
TIMELINE: MAY 2018 – JAN 2020



New Lee HS Fine Arts Center Phasing Plan

Lee High School  
North East ISD

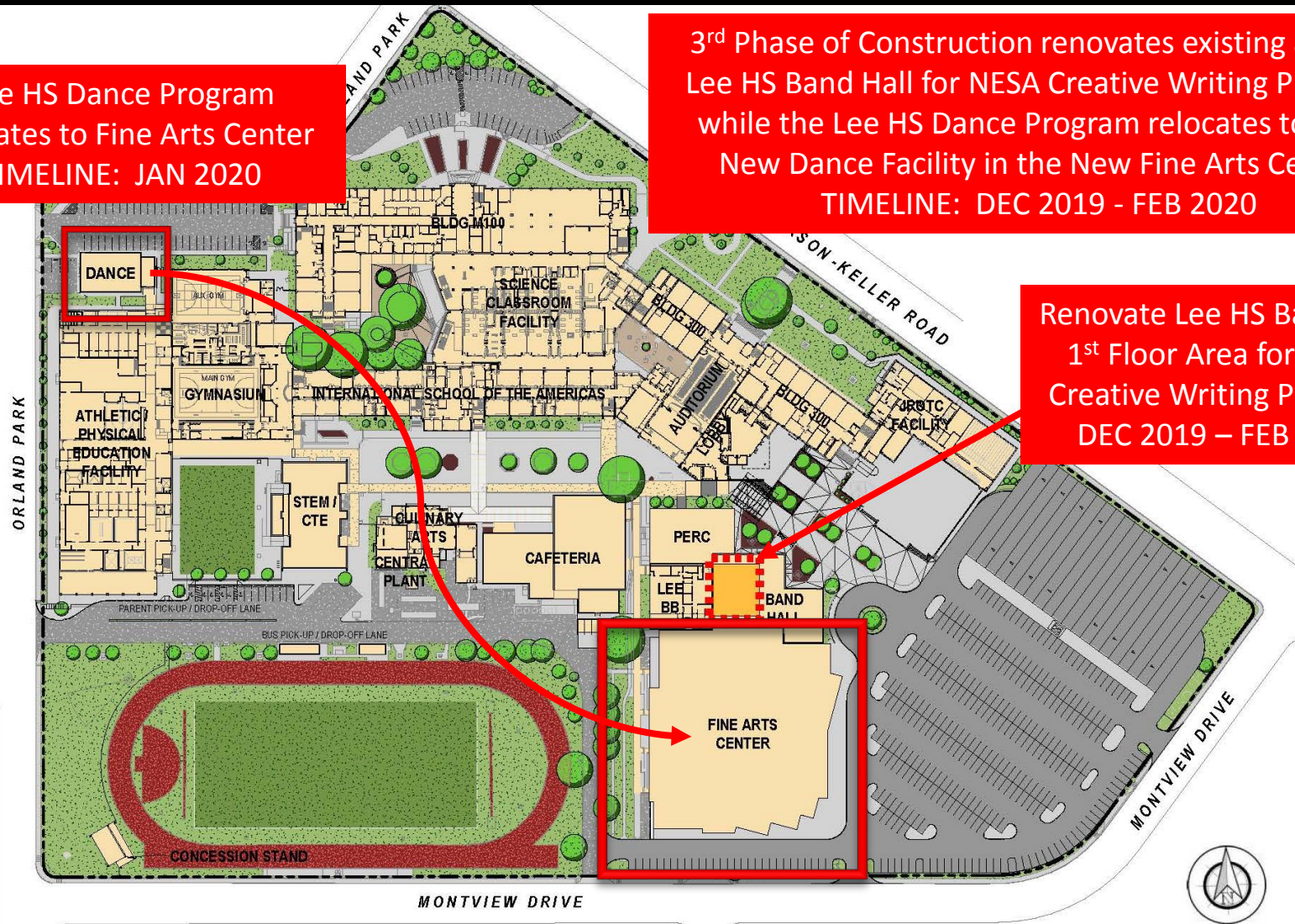


# New Lee HS Fine Arts Center Phasing Plan

Lee HS Dance Program  
relocates to Fine Arts Center  
TIMELINE: JAN 2020

3<sup>rd</sup> Phase of Construction renovates existing area at  
Lee HS Band Hall for NESA Creative Writing Program  
while the Lee HS Dance Program relocates to their  
New Dance Facility in the New Fine Arts Center  
TIMELINE: DEC 2019 - FEB 2020

Renovate Lee HS Band Hall  
1<sup>st</sup> Floor Area for NESA  
Creative Writing Program  
DEC 2019 – FEB 2020

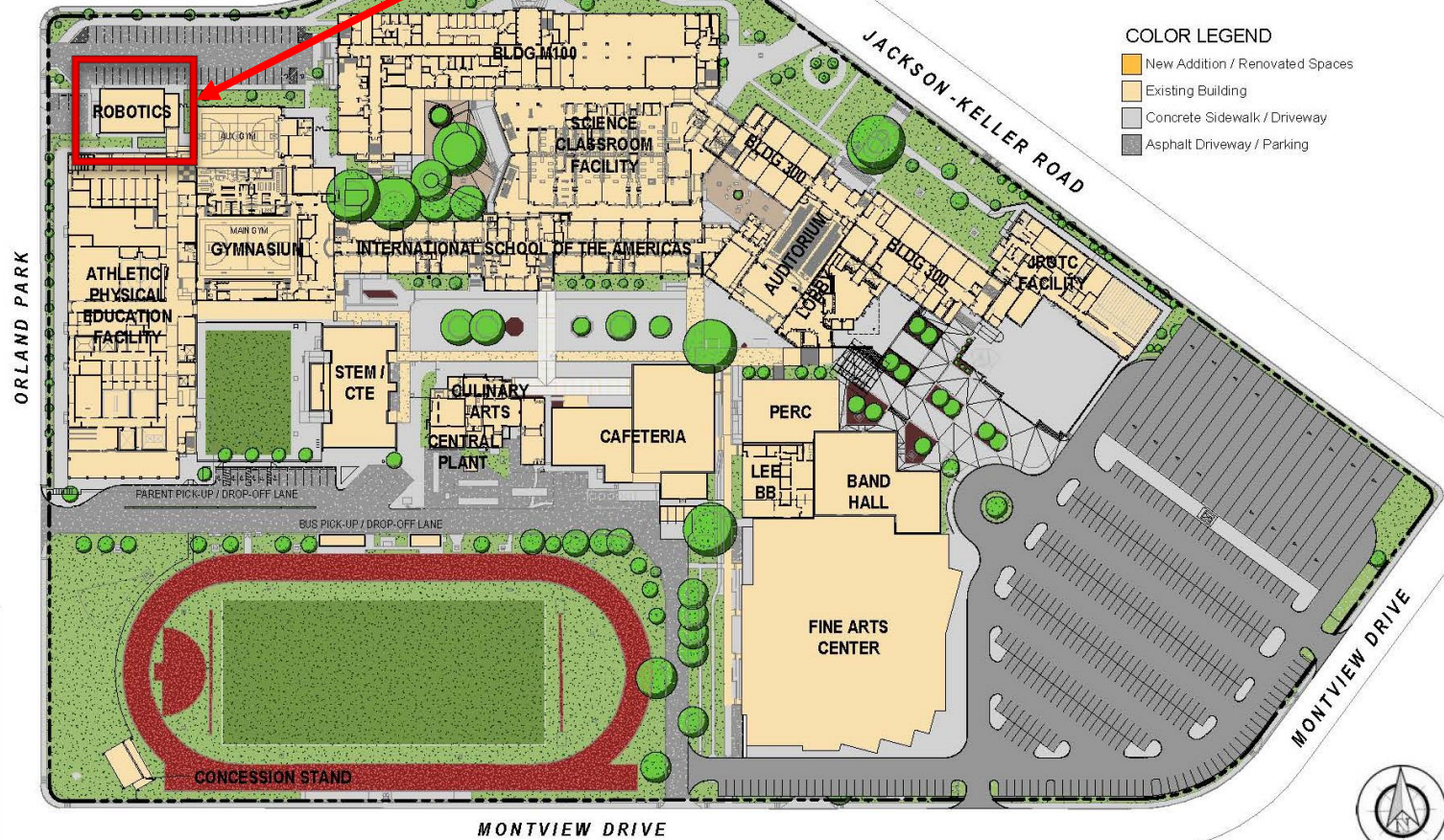




# New Lee HS Fine Arts Center Phasing Plan

4<sup>th</sup> Phase of Construction renovates Lee HS existing Dance Facility into the STEM Robotics Lab  
TIMELINE: FEB – MAY 2020

(445 Dedicated / 165 Special Event)





# 2015 Bond Design & Construction Timeline



**CTE & STEM Facilities Design & Construction Timeline**

*Lee High School  
North East ISD*

# Lee HS CTE & STEM 2015 Bond Project

## District Staff Recommendation

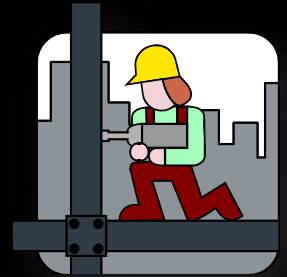
---

- Recommend Approval of Lee High School CTE & STEM Facilities Schematic Design Presentation which Constructs the following 2015 Bond-Approved Program Elements:
  - Renovate the Old Science Building into CTE & STEM Facilities
  - Renovate the Home Econ. Facility into CTE Culinary Arts Facility
  - Renovate the Lee HS Dance Facility into STEM Robotics Lab
  - Renovate Lee HS Teacher Workroom into STEM Faculty Offices
  - Construction Budget = \$6,000,000





# Lee High School CTE & STEM Facilities Schematic Design Presentation 2015 Bond Program



## Questions ?