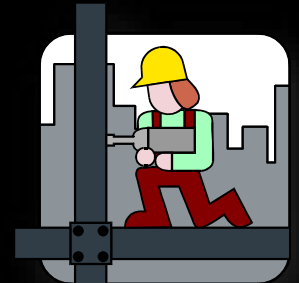




# MacArthur High School Fine Arts Addition and Renovations Project Schematic Design Presentation 2015 Bond Program



Garrett J. Sullivan, Executive Director  
Construction Management and Engineering Department

November 14, 2016

# Schematic Design Presentation Agenda

---

- Project Design Team
- Program Review
- Project Site Analysis
- Concept Design Plans
- Budget Review
- Project Phasing Plan
- Schedule Review
- Staff Recommendation



# MacArthur High School Project Design Team

---

- Architect: Lopez Salas Architects
- MEP Engineer: MS2 Consulting Engineers
- Structural Engineer: Alpha Consulting Engineers
- Civil Engineer: Pape-Dawson Engineers
- Roofing Engineer: Wiss, Janey, Elstner & Associates
- Technology Engineer: Wrightson, Johnson, Haddon, & Williams
- Fire Protection/Building Code Engineer: Protection Development, Inc.
- Landscape Architect: RVK Landscape Architects
- Food Service Engineer: Robert Simpson & Associates
- Acoustical Engineer: Wrightson, Johnson, Haddon, & Williams
- Geotechnical & Material Testing: Terracon Consultants
- Test, Balance, and Commissioning: Alderson & Associates





# MacArthur High School Site Aerial



**Campus Site Aerial**

**MacArthur High School  
North East ISD**

# 2015 Bond Program Review for MacArthur High School Project # 4.6

---

- Construct New Facility Addition (Orchestra & Dance)
- Renovate Fine Arts Facility (Band & Drama)
- Install New Freight Elevator (Large Capacity)
- Construct Various Site Improvements (Landscape, Irrigation, Drainage, Site Utilities, and Hardscape)

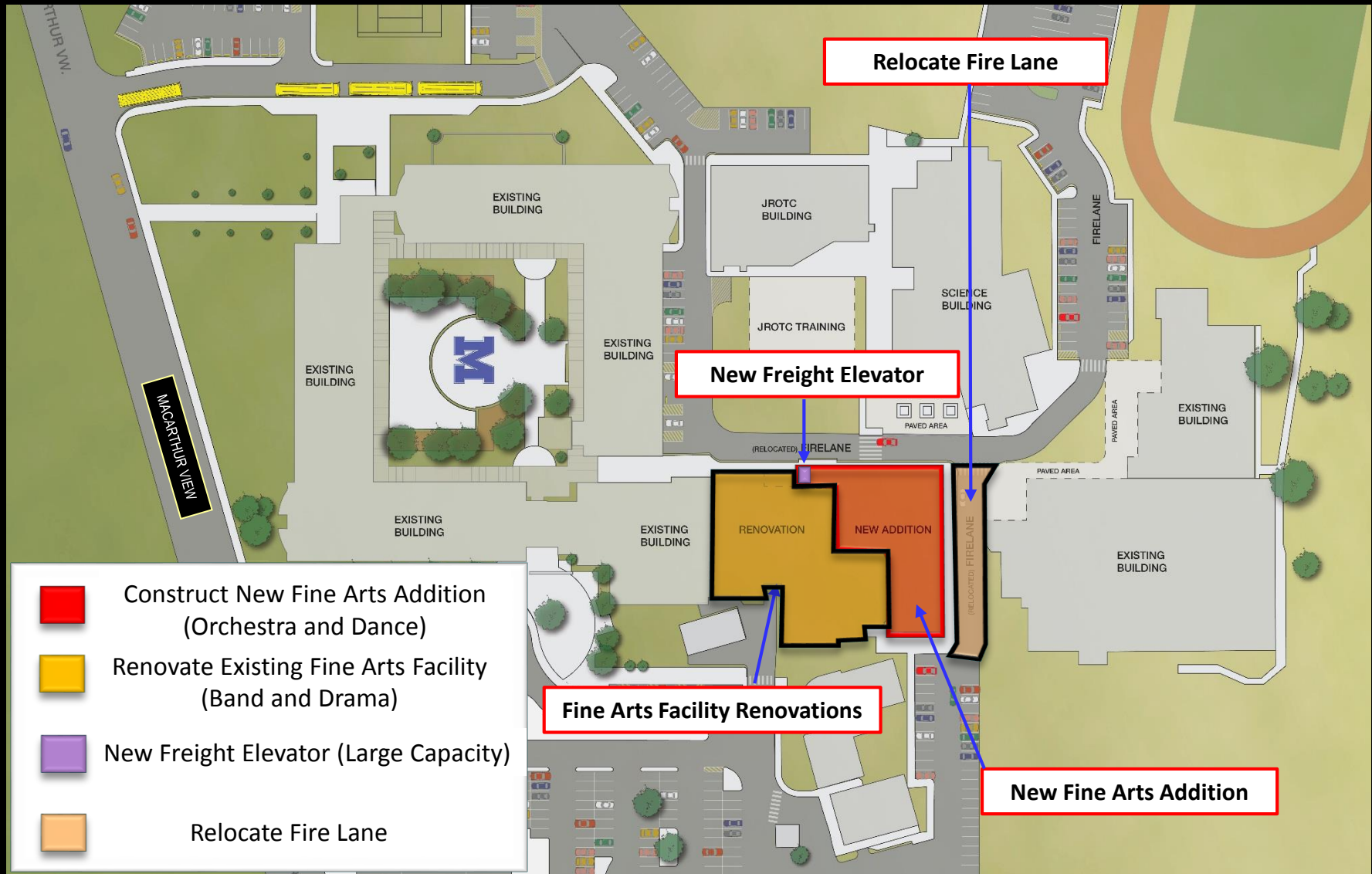


# 2015 Bond Program Review for MacArthur HS

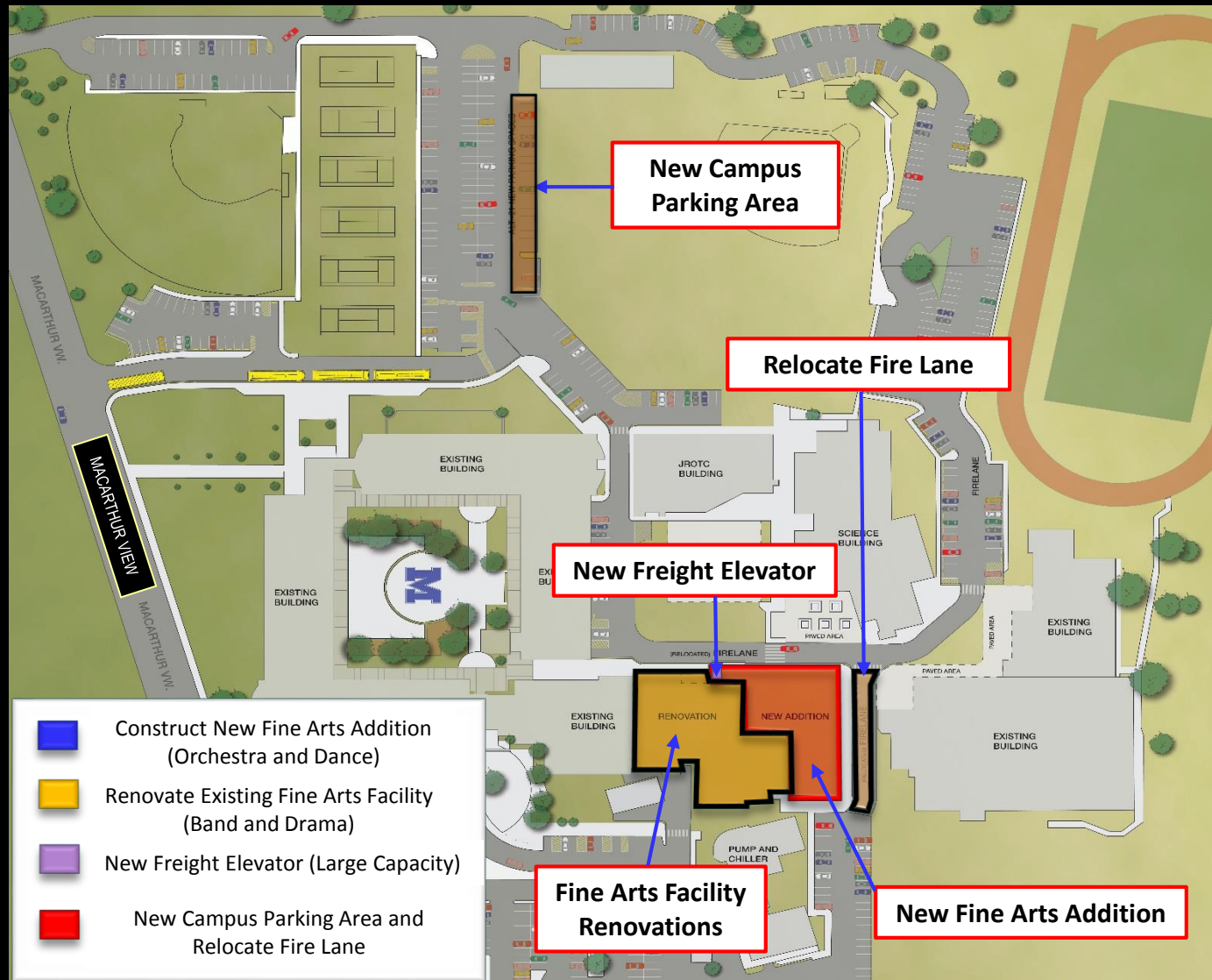
---

1. New Fine Arts Addition (17,039 sq. ft.)
  - a. Orchestra Program
  - b. Dance Program
  - c. Support Areas (Custodial and MEP)
2. Fine Arts Facility Renovations (11,740 sq. ft.)
  - a. Band Program
  - b. Drama Program
3. New Freight Elevator (Large Capacity)
4. Various Site Improvements
  - a. Relocate Fire Lane adjacent to Fine Arts Facility
  - b. New Campus Parking Area
  - c. Landscape, Irrigation, Drainage, Site Utilities, and Hardscape

# MacArthur HS Project Site Analysis (Fine Arts Facility)



# MacArthur HS Project Site Analysis (Fine Arts Facility)





# MacArthur HS Project Site Analysis (Fine Arts Facility)



**Project Site Analysis for Fine Arts Facility**

**MacArthur High School  
North East ISD**



(RELOCATED) FIRELANE

MEZZ. STAIRS 103 16'-0"

FREIGHT ELEV. VESTIBULE 154 33'-0" x 10'-0"

F. ELEV. 185 14'-0" x 10'-0"

MECH. 153 14'-0" x 10'-0"

MECH. E151 15'-0" x 10'-0"

BOYS RR 150 10'-0" x 10'-0"

GIRLS RR 149 10'-0" x 10'-0"

BOOSTER 148 10'-0" x 10'-0"

JAN. E147 10'-0" x 10'-0"

STO. E152 10'-0" x 10'-0"

FAC. LOCKERS 144 10'-0" x 10'-0"

FAC. SHOWER 145 10'-0" x 10'-0"

ENTRY VESTIBULE 100 14'-0" x 10'-0"

DANCE OFFICE 104 10'-0" x 10'-0"

RR 105 10'-0" x 10'-0"

DANCE STORAGE 106 22'-0" x 40'-0"

LOCKER RM 107 11'-0" x 10'-0"

RR SHO 108 10'-0" x 10'-0"

RR SHO 109 10'-0" x 10'-0"

DANCE REHEARSAL AREA 102 8'-0" x 35'-0"

MAT STORAGE 110 27'-0" x 25'-0"

CAFETERIA

LARGE ENSEMBLE PR 138 33'-0" x 11'-0"

UNIFORM STO 139 33'-0" x 11'-0"

INSTRUMENT STO E136 10'-0" x 10'-0"

IDF E135 10'-0" x 10'-0"

BAND OFFICE 133 27'-0" x 12'-0"

BAND OFFICE 132 19'-0" x 12'-0"

UNIFORM STORAGE 131 31'-0" x 14'-0"

INSTRUMENT LOCKERS 129 27'-0" x 12'-0"

BAND REHEARSAL HALL E123 10'-0" x 10'-0"

GIRLS RR 112 10'-0" x 10'-0"

BOYS RR 114 10'-0" x 10'-0"

ORCH OFFICE 116 23'-0" x 40'-0"

LIB/WR/STO 117 1'-0" x 10'-0"

ORCHESTRA REHEARSAL 115 23'-0" x 15'-0"

ENSEMBLE PR 118 33'-0" x 11'-0"

ENSEMBLE PR 119 20'-0" x 7'-0"

PR 120 6'-0" x 7'-0"

PR 121 6'-0" x 7'-0"

PR 122 6'-0" x 7'-0"

ENSEMBLE PR 127 10'-0" x 10'-0"

ENSEMBLE PR 126 10'-0" x 10'-0"

LIB/WR F125 10'-0" x 10'-0"

STO. E124 10'-0" x 10'-0"

RELOCATED ICE MACH. 10'-0" x 10'-0"

LOADING DOCK 10'-0" x 10'-0"

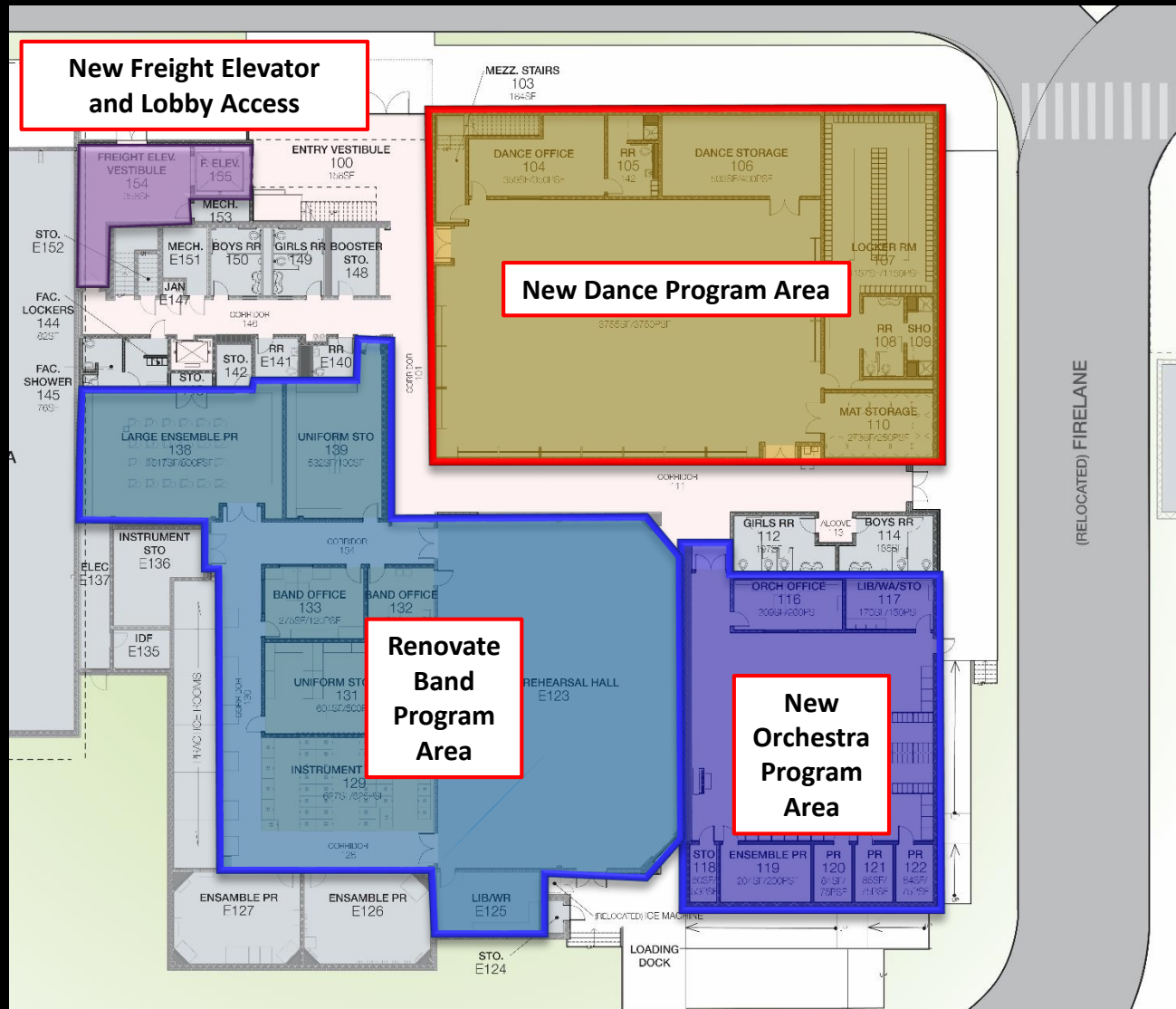
PAVED AREA

GYMNASIUM

(RELOCATED) FIRELANE

**MacArthur High School**  
**North East ISD**

# MacArthur HS Fine Arts Facility Floor Plan

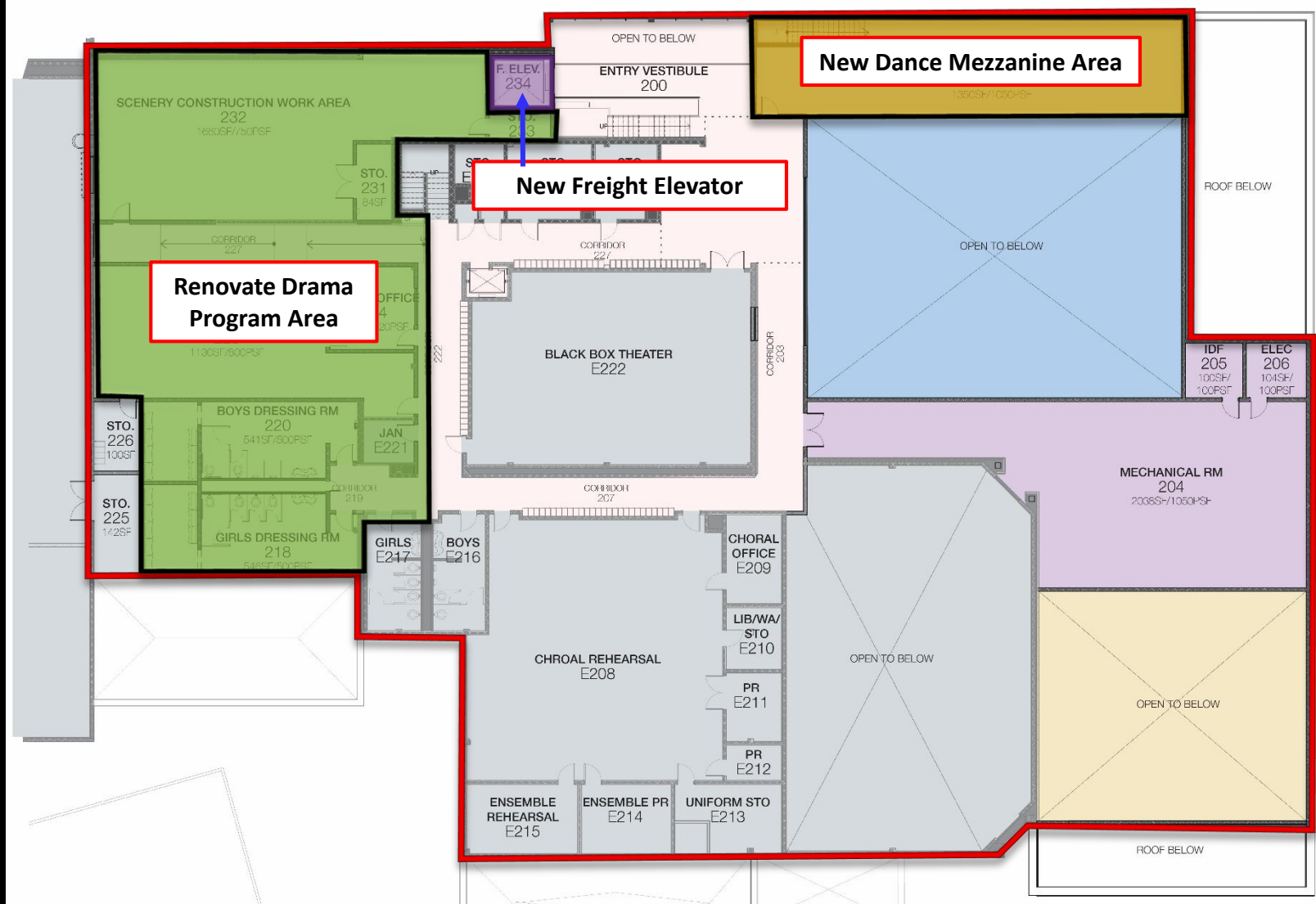


Fine Arts Facility Addition 1<sup>st</sup> Floor Plan

MacArthur High School  
North East ISD



# MacArthur HS Fine Arts Facility Floor Plan



# MacArthur HS Fine Arts Facility Perspective

---

View Looking East from New JROTC Facility



**MacArthur HS Fine Arts Facility Perspective**

*MacArthur High School  
North East ISD*

# MacArthur HS Fine Arts Facility Perspective

---

**View Looking Southeast from New Science/Classroom Facility**



**MacArthur HS Fine Arts Facility Perspective**

*MacArthur High School  
North East ISD*



# MacArthur HS Fine Arts Facility Perspective

---

View Looking Southwest from Soccer Field



**MacArthur HS Fine Arts Facility Perspective**

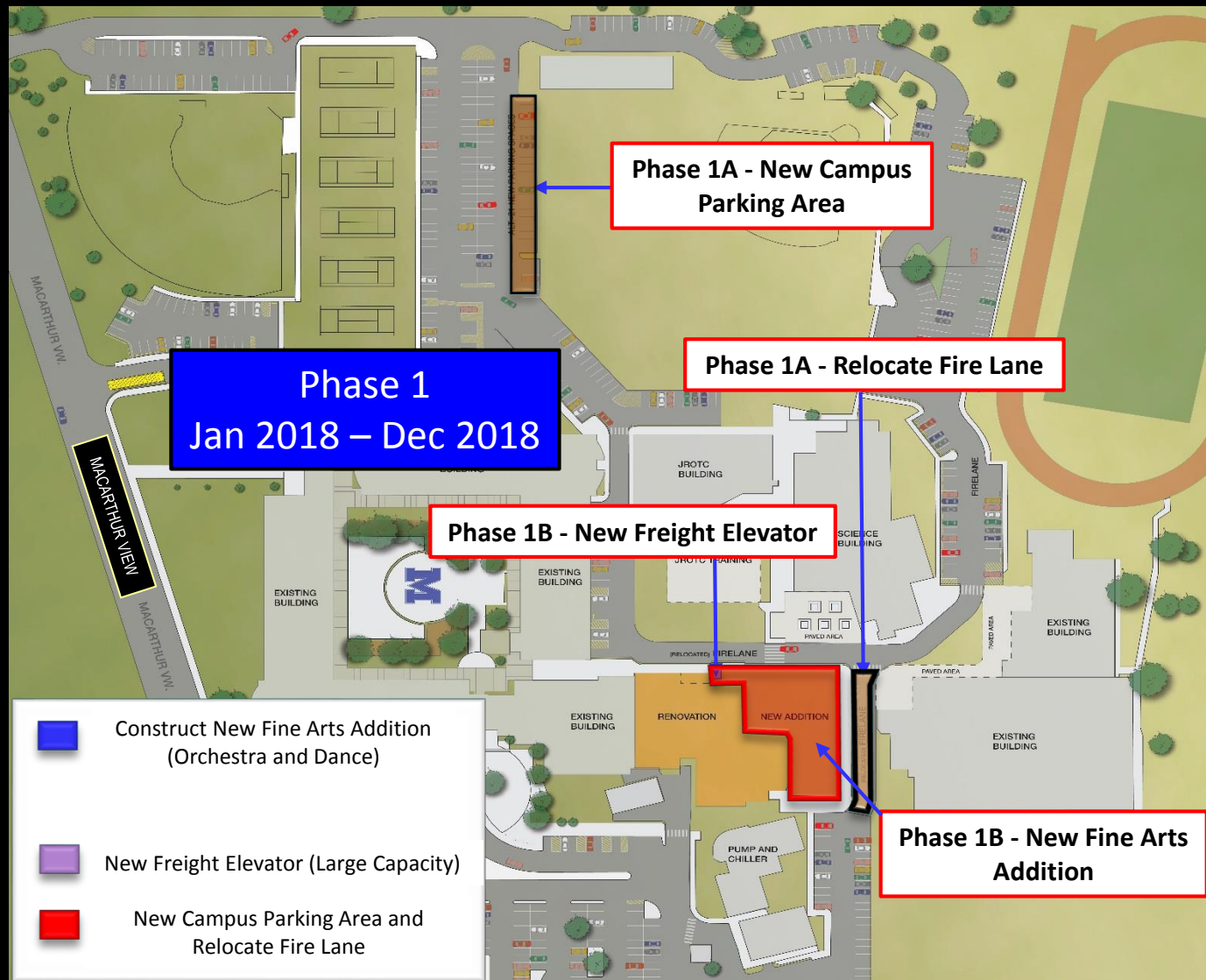
*MacArthur High School  
North East ISD*

# 2015 Bond Budget Review for MacArthur HS Project

---

• Design Account:	\$ 1,075,000
• Construction Account:	\$ 7,250,000
• Technology Account:	\$ 25,000
• FF&E Account:	<u>\$ 150,000</u>
TOTAL BOND PROGRAM =	\$ 8,500,000

# MacArthur High School Project Phasing Plan

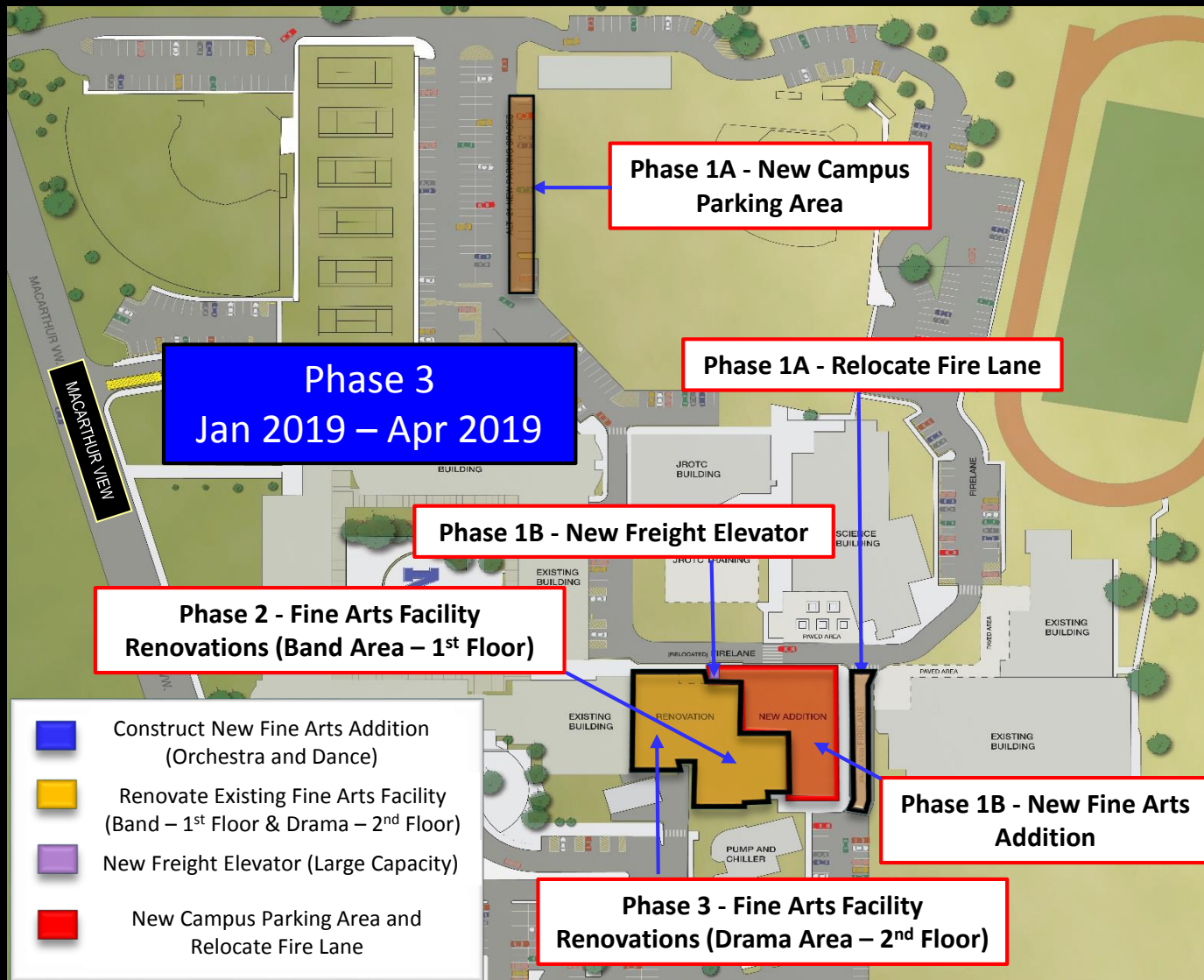




# MacArthur High School Project Phasing Plan



# MacArthur High School Project Phasing Plan





# 2015 Bond Design & Construction Timeline





# MacArthur HS 2015 Bond Project

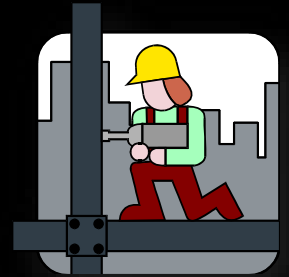
## District Staff Recommendation

---

- Recommend Approval of MacArthur High School Schematic Design Presentation which Constructs the following 2015 Bond-Approved Program Elements:
  - Construct New Facility Addition (Orchestra and Dance)
  - Renovate Fine Arts Facility (Band and Drama)
  - Install New Freight Elevator (Large Capacity)
  - Various Site Improvements (Landscape, Irrigation, Drainage, Site Utilities, and Hardscape)
  - Construction Budget = \$ 7,250,000



# MacArthur High School Fine Arts Addition and Renovations Schematic Design Presentation 2015 Bond Program



## Questions ?