

# **Madison High School New Academic & Support Facilities Construction Document Presentation 2003 Bond Program**



**Garrett J. Sullivan, Executive Director  
Construction Management & Engineering Department**

**June 13, 2005**

# **Madison High School**

## **New Academic & Support Facilities**

---



# Madison High School: 2003 Bond Program

---

- Construct New Academic/Support Facilities
  - Science Program
    - 14 Science Classrooms/Labs and 7 Prep-Storage Rooms
    - Departmental Teacher Resource Center
  - Computer Science Program (1 Computer Science Lab)
  - New Kitchen
- Convert existing Kitchen to Cafeteria Dining and Renovate existing Cafeteria Dining Area
- Re-develop Outdoor Courtyard Dining Area
- Site-work and Hard-scape Improvements (Parking & Bus Loop)
- Upgrade Band Marching Area (Seal/Stripe)
- Renovate existing Science Labs to Classrooms “as needed”
- No Building Demolition at Campus

# Madison High School: 2003 Bond Program

---

- Construct New Academic/Support Facilities
  - Science Program
    - 14 Science Classrooms/Labs and 7 Prep-Storage Rooms
    - Departmental Teacher Resource Center
  - Computer Science Program (1 Computer Science Lab)
  - New Kitchen
- Convert existing Kitchen to Cafeteria Dining and Renovate existing Cafeteria Dining Area ... **will Build New in lieu of Renovation**
- Re-develop Outdoor Courtyard Dining Area
- Site-work and Hard-scape Improvements (Parking & Bus Loop)
- Upgrade Band Marching Area (Seal/Stripe) ... **will Build New and Add Parking Capacity to Campus**
- Renovate existing Science Labs to Classrooms “as needed”
- No Building Demolition at Campus ... **will Build New Cafeteria**

# Madison High School: Program Analysis

---

- Construct New Academic and Support Facilities
  - Science Program
    - 14 Science Classrooms/Labs and 7 Prep-Storage Rooms
    - Departmental Teacher Resource Area
  - Computer Science Program (1 Computer Science Lab)
  - New Kitchen and Cafeteria Dining Area
  - New Outdoor Courtyard Dining Area
- Site-work and Hard-scape Improvements
  - Relocate Bus Loop and Construct Covered Walkway for Student Drop-off/Pick-up
  - Construct New Entry Plaza with Covered Walkways at Parent Loop for Drop-off/Pick-up
  - Expand Parking Facilities by constructing new Parking Area in vicinity of the Athletic Fields (Additive Alternate)
- Construct new Band Marching Area / Satellite Parking Lot

# Madison High School Existing Site Plan

**ROTC & Classrooms**

**Career & Tech**

**Existing  
Kitchen &  
Cafeteria**

**Athletics / PE**

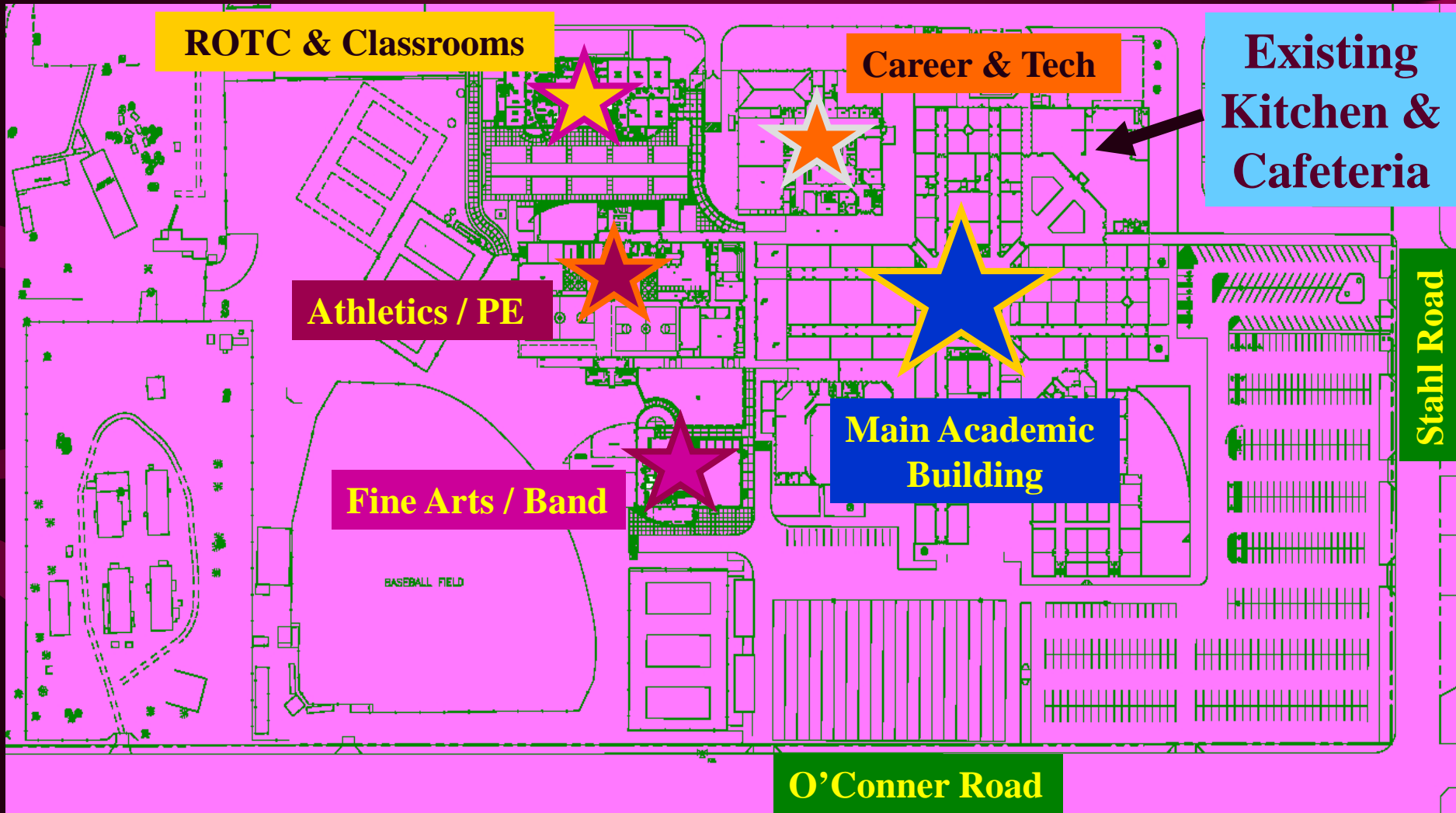
**Main Academic  
Building**

**Fine Arts / Band**

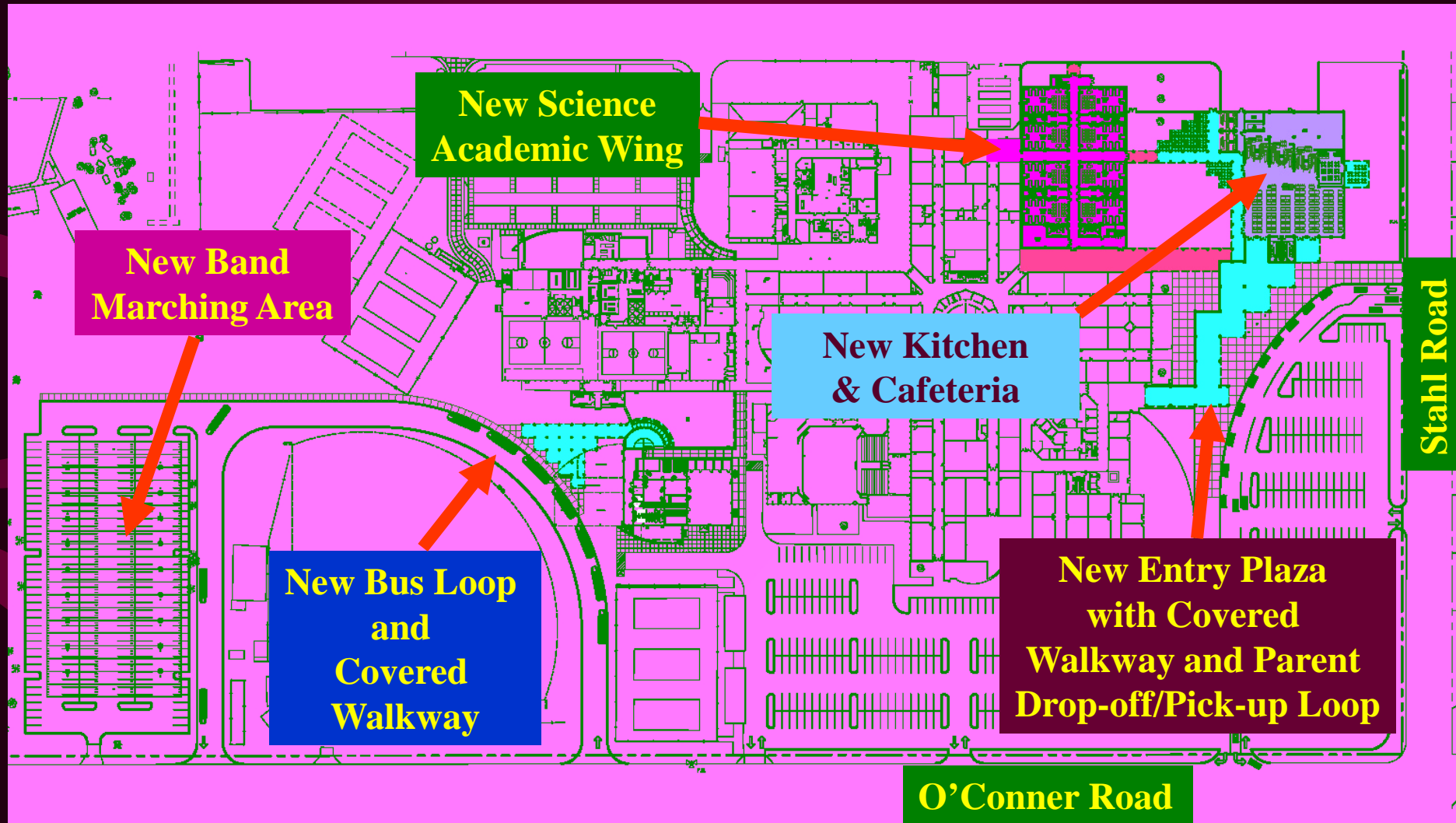
**Stahl Road**

**O'Conner Road**

BASEBALL FIELD



# Madison High School Proposed Site Plan





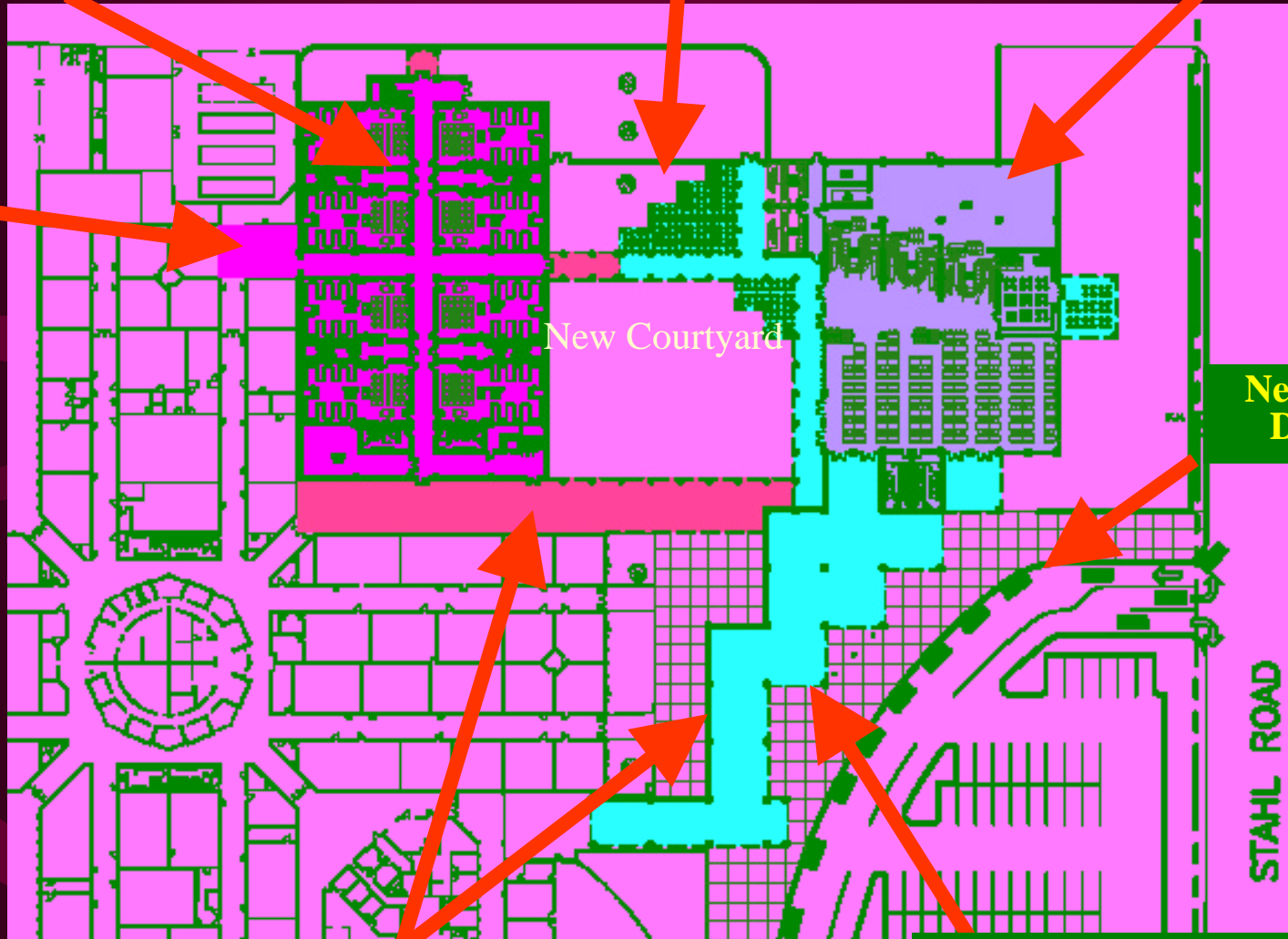
# Madison High School Academic & Support Areas

New Academic  
Science Wing

Outdoor Dining Area

New Kitchen & Cafeteria

Link to  
Existing  
Corridor



New Parent  
Drop-off

New Covered Canopies

New Entry Plaza



# Madison High School Elevations



# Madison High School Elevations



**View From Parent Drop-off/Pick-up  
Loop Looking North**

# Madison High School Elevations



**View of Science Building Addition**



# Madison High School Elevations



**View of Cafeteria**

# Madison High School Elevations



**Cafeteria Interior  
Elevations**

# Madison High School Elevations



**View of Outdoor Dining Area**

# Budget Summary

---

Construction Account (1):	\$14,418,084.00
Design Account:	\$ 1,161,433.00
Technology Account:	\$ 375,000.00
FF&E Account (2):	\$ 325,000.00
CM Services:	\$ 366,289.00
Construction Contingency:	\$ 1,081,651.00
ROCIP Contingency (3):	<u>\$ 432,543.00</u>
Grand Total:	<b>\$18,160,000.00</b>

Note 1 – Construction: Includes \$141,312 for Asbestos Abatement

Note 2 – FF&E: Furniture, Fixtures and Equipment

Note 3 – ROCIP: Rolling Owner Controlled Insurance Program



# Budget-Bid Analysis

---

- Bid Assumptions

---

- New Academic and Support Facilities

- Bid Cost ~ \$145/sf x 72,684 square feet = \$10,538,777
    - Food Service Equipment = \$750,000
    - Renovate 1 existing Classroom to Corridor Area = \$75,000
    - Demolition Costs for existing Kitchen/Cafeteria Area = \$275,000
    - Site Development = \$2,725,000
      - Band Marching Area / Parking / Bus Loop with Covered Walkway / Entry Plaza with Covered Walkway and Parent Drop-off/Pick-up Loop
      - Budget Total includes CPS costs to relocate Electrical Service @ 75 Acres
      - Parking Expansion vicinity of Athletic Fields (Bid Alternate)

- Schematic Design Cost Estimate = \$14,363,777

---

- Construction Budget = \$14,418,084

---

- Contingency Funds Available (ALL) = \$1,081,651

# Bid Award Analysis

---

– New Academic and Support Facilities (Base Bid Cost) = \$14,997,000.00

---

– Alternate #1 (Expand Parking Facilities) = \$ 113,000.00

– Alternate #2 (Mechanical Upgrade) = \$ 10,000.00

– Total Contract Cost = \$ 15,120,000.00 (Under Budget)

---

– Contingency Budget Remaining = \$379,735

---

# Timeline

---

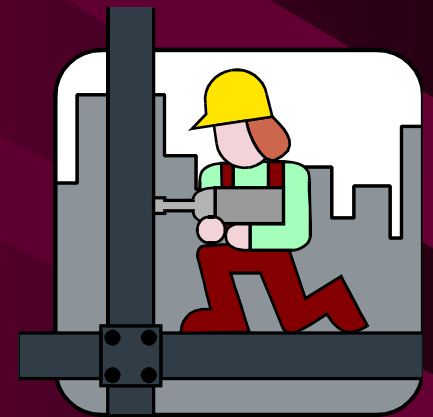
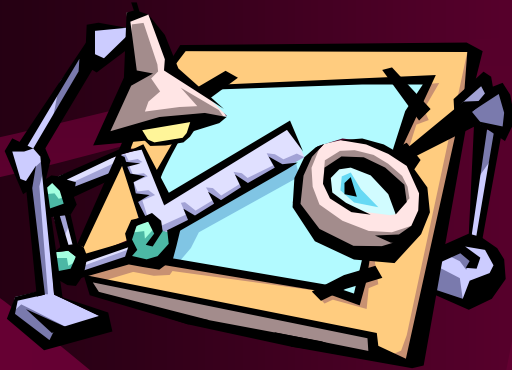
- Schematic Design Approval – 9 August 2004
- Design/Construction Document Development – 10 Aug 04 thru 9 May 05
- Bidding Period (RFCSP) – 10 May thru 2 June 2005
- Bid Opening – 2 June 2005
- Contract Award – 13 June 2005
- Pre-Construction Services – 14 June thru 9 August 2005
- Notice to Proceed with Construction – Various
  - Phase 1: 1 July 2005 – Selected CE, Site Utilities & Technology Infrastructure
  - Phase 2: 10 August 2005 – New Kitchen and Cafeteria Facility
  - Phase 3: 1 July 2006 – New Science Building Addition
- Construction Period – 1 July 2005 12 August 2007
- Move-In Period – Various
  - Phase 2: July/August 2006 – New Kitchen and Cafeteria
  - Phase 3: July/August 2007 – New Science Building Addition
- New Kitchen and Cafeteria Opens – August 2006
- New Science Building Addition Opens – August 2007

# Bid Award Presentation

Madison High School

New Academic & Support Facilities

2003 Bond Program



# Questions?