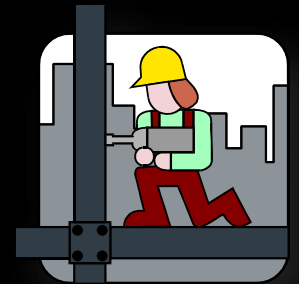
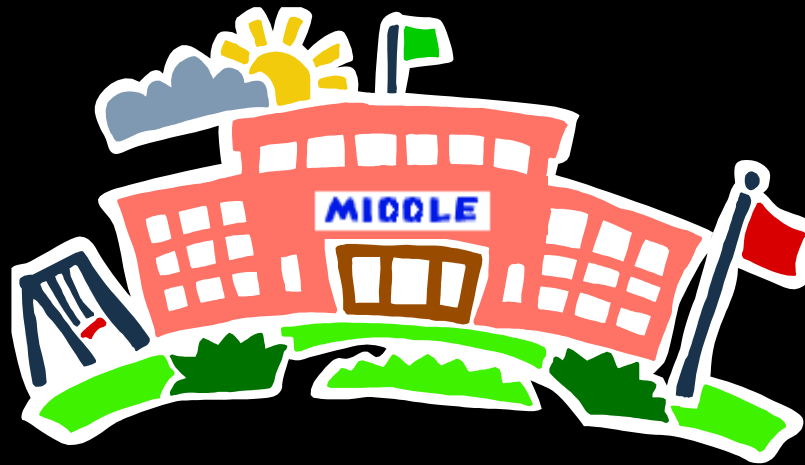




# 2015 Bond Nimitz MS Fine Arts Addition (New Band and Choir Facilities) Project Schematic Design Presentation

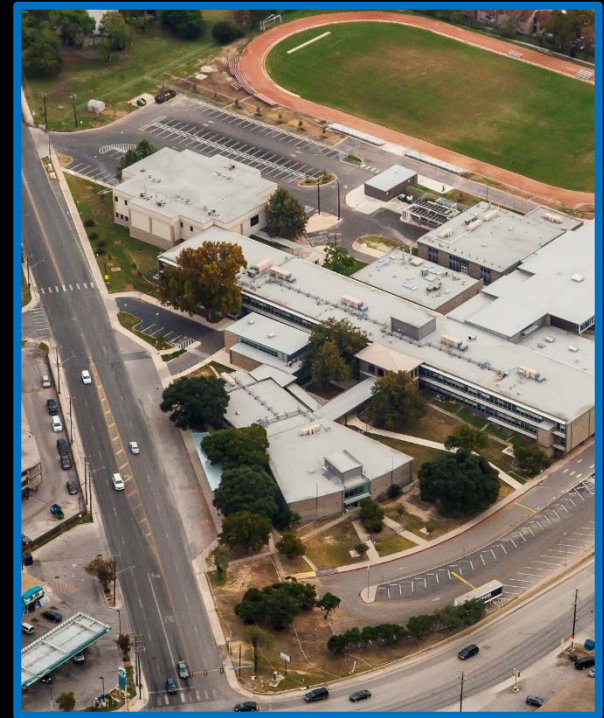


Garrett J. Sullivan, Executive Director  
Construction Management and Engineering Department

May 8, 2017

# Schematic Design Presentation Agenda

- Project Design Team
- Program Review
- Project Site Analysis
- Concept Design Plans
- Budget Review
- Project Phasing Plan
- Schedule Review
- Staff Recommendation



# Nimitz MS Fine Arts Project Design Team

---

- Architect: LPA, Inc.
- MEP Engineer: MEP Engineering
- Structural Engineer: Intelligent Engineering Services
- Civil Engineer: CDS Muery
- Roofing Engineer: Wiss, Janey, Elstner & Associates
- Technology Engineer: Combs Consulting Group
- Building Code Engineer: Protection Development, Inc.
- Landscape Architect: Cooper-Lochte Landscape Architecture
- Acoustical Engineer: Bonner Associates
- Geotechnical & Material Testing: Terracon Consultants
- Test, Balance, and Commissioning: Engineered Air Balance





# Nimitz Middle School Site Aerial



Campus Site Aerial

*Nimitz MS Fine Arts  
North East ISD*



# 2015 Bond Program Review for Nimitz Middle School Fine Arts Addition

---

- Construct New Band and Choir Facilities (6,060 sq. ft.)
  - New Band Hall with Ensemble Practice Room, Band Office, Sound Practice Rooms, Instrument Storage, General Storage Area, and Library
  - New Choir Facility with Choir Office, Sound Practice Rooms, Uniform Storage, and Library
- Renovate Existing Auditorium Area
  - New Auditorium Seats, New Stage Floor, New Theater Stage Lighting, & New Stage Curtain
  - New Public Restrooms
  - Brick-in Existing Exterior Windows
- Enclose Existing Fine Arts Facility (Band, Choir, Orchestra, Theater Arts, and Auditorium Areas) with Interior Circulation & Connecting Corridors (9,925 sq. ft.)
- Construct Site Improvements (Landscape, Irrigation, Drainage, Site Utilities, and Hardscape) to Compliment the New Fine Arts Facility Addition

# Nimitz MS Project Site Analysis (Fine Arts Addition)

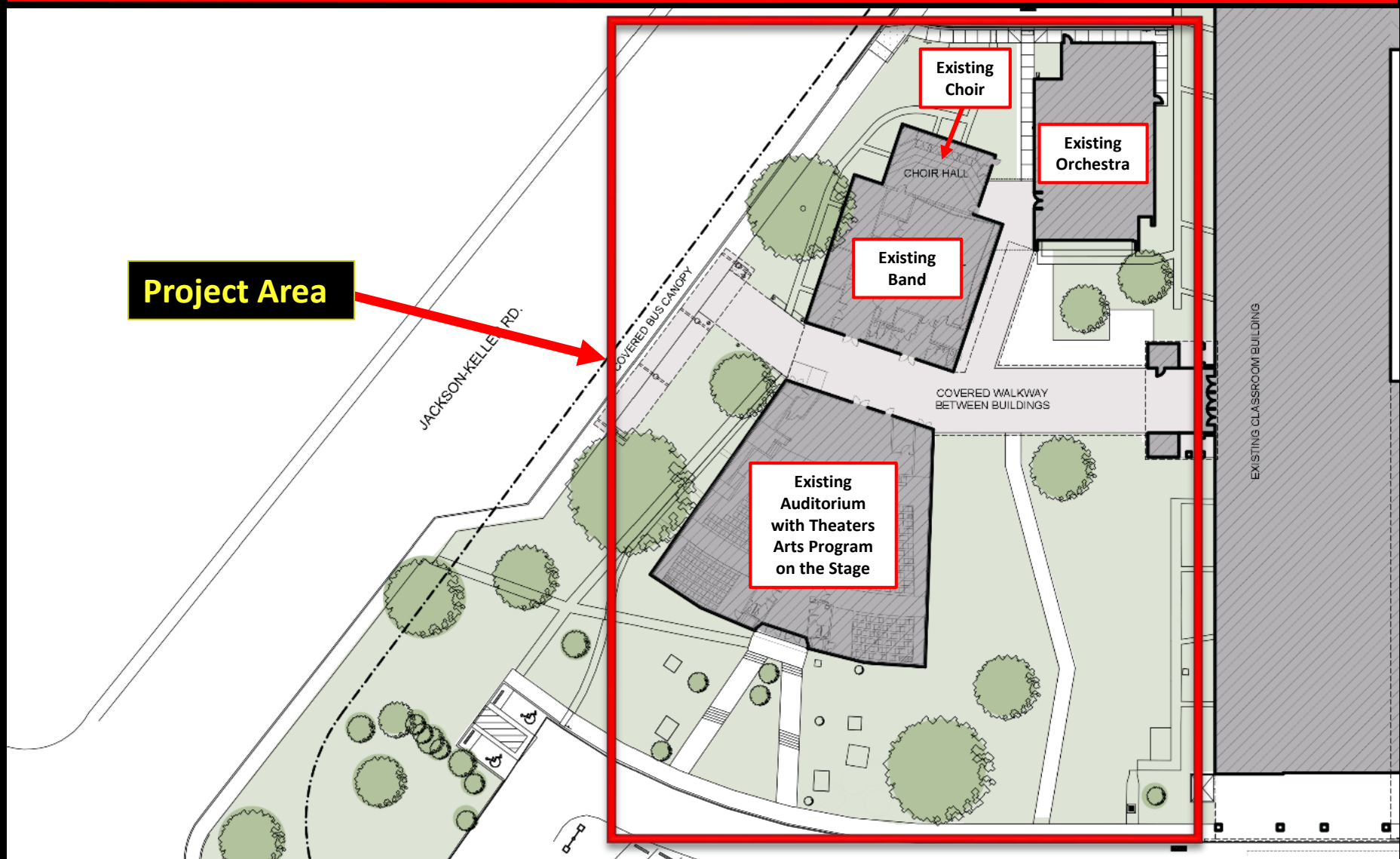


Project Site Analysis (Fine Arts Addition)

*Nimitz MS Fine Arts  
North East ISD*

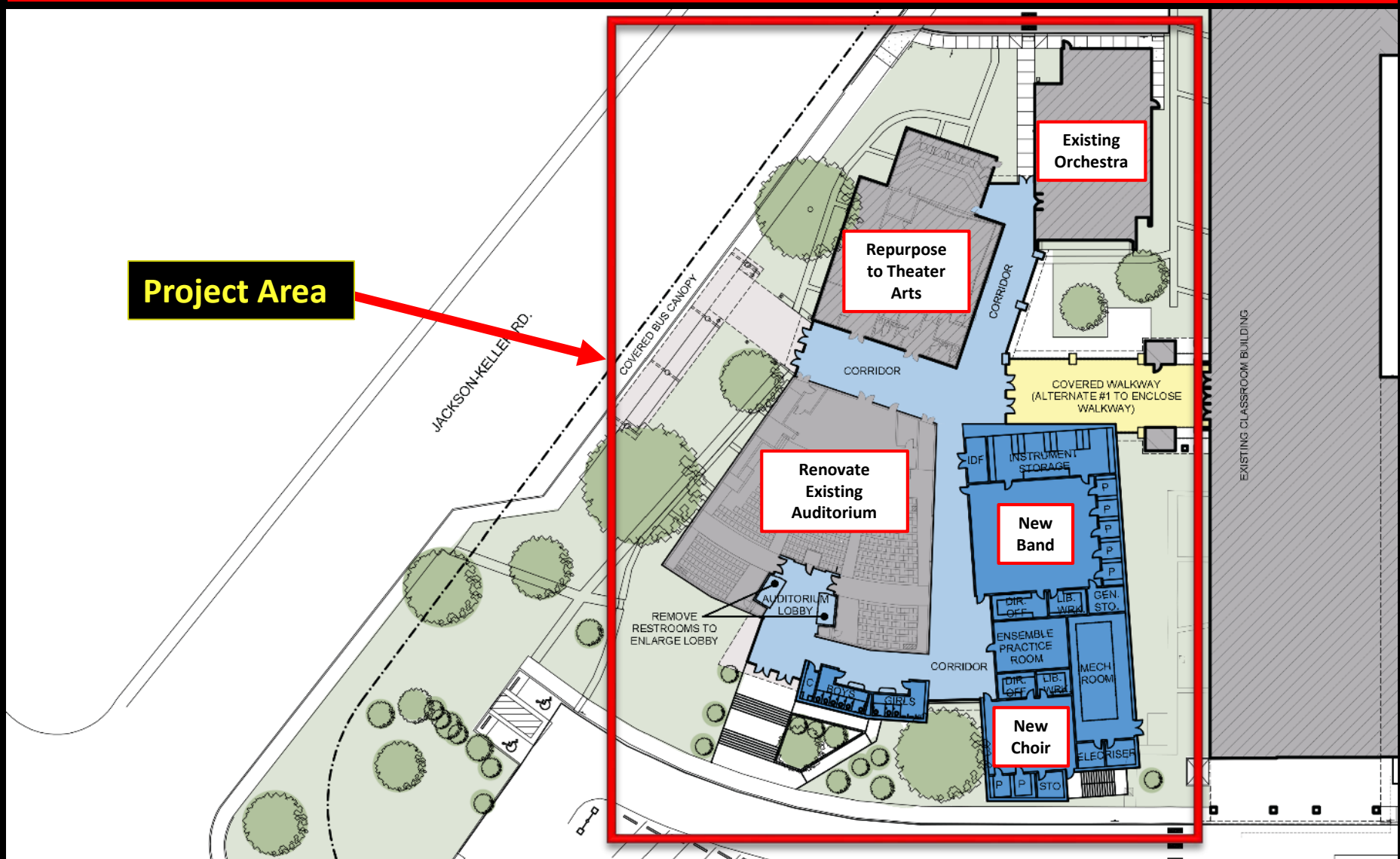


# Nimitz MS Project Site Analysis (Existing Conditions)



# Nimitz MS Project Site Analysis (Fine Arts Addition)

**Project Area**

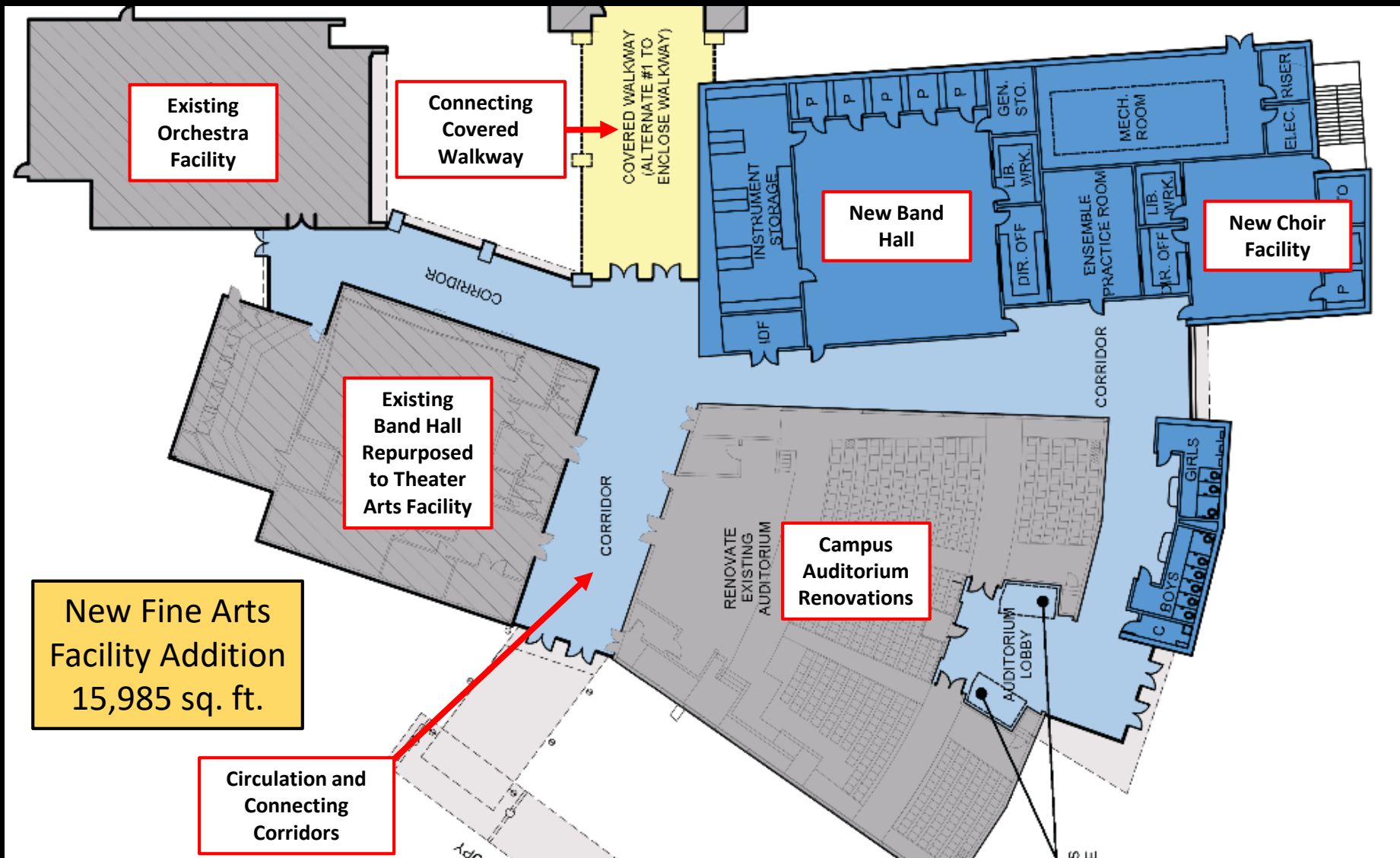


Project Site Analysis (Fine Arts Addition)

Nimitz MS Fine Arts  
North East ISD



# Nimitz MS Fine Arts Addition (Band and Choir) Floor Plan



# Nimitz MS New Fine Arts Facility Elevations



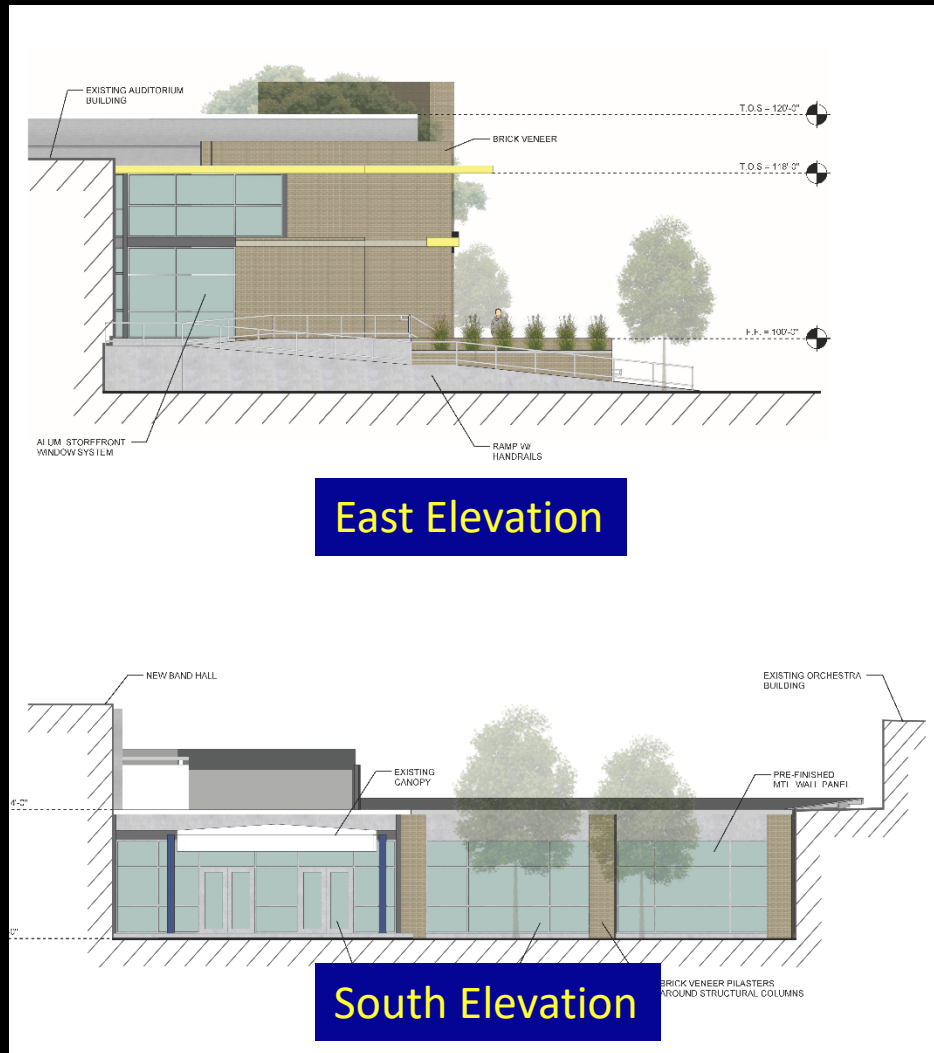
West Elevation – View from Blanco



North Elevation – View From Jackson-Keller



# Nimitz MS New Fine Arts Facility Elevations



New Fine Arts Facility Elevations

Nimitz MS Fine Arts  
North East ISD

# Nimitz MS New Fine Arts Facility Perspective

---



New Fine Arts Facility Perspective

*Nimitz MS Fine Arts  
North East ISD*



# Nimitz MS New Fine Arts Facility Perspective



New Fine Arts Facility Perspective

*Nimitz MS Fine Arts  
North East ISD*

# 2015 Bond Budget Review for Nimitz MS Fine Arts Facility Addition Project

---

|                         |                   |
|-------------------------|-------------------|
| • Design Account:       | \$ 1,025,000      |
| • Construction Account: | \$ 6,000,000      |
| • Technology Account:   | \$ 25,000         |
| • FF&E Account:         | <u>\$ 200,000</u> |
| TOTAL BOND PROGRAM =    | \$ 7,250,000      |



# 2015 Bond Design and Construction Timeline

15 MONTHS (FEB 2017 – MAY 2018)

PROJECT DESIGN

MAY 2018

3 MONTHS

BID AWD PCS

AUG 2018

15 MONTHS (SEP 2018 – NOV 2019)

NOV 2019

FINE ARTS FACILITY ADDITION

Construct New Band and Choir Facilities  
Renovate Campus Auditorium Area  
Create an Enclosed Fine Arts Facility  
with Interior Circulation and  
Connecting Corridors

# Nimitz MS Fine Arts Facility Addition Project

## District Staff Recommendation

---

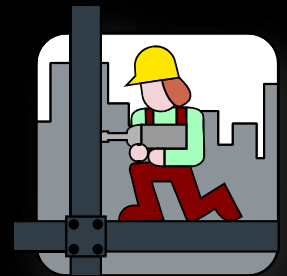
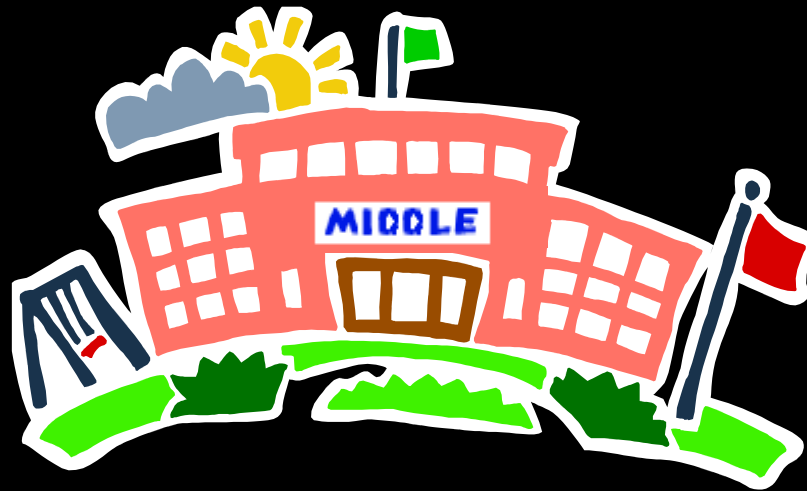
Recommend Approval of the Nimitz Middle School Fine Arts Addition and Renovations Project Schematic Design Presentation which Constructs the following 2015 Bond-Approved Program Elements:

- Construct New Band and Choir Facilities
  - New Band Hall with Ensemble Practice Room, Band Office, Sound Practice Rooms, Instrument Storage, General Storage Area, and Library
  - New Choir Facility with Choir Office, Sound Practice Rooms, Uniform Storage, & Library
- Renovate Existing Auditorium Area
  - New Auditorium Seats, New Public Restrooms, New Stage Floor, New Theater Stage Lighting, New Stage Curtain, and Brick-In Existing Exterior Windows
- Enclose Existing Fine Arts Facility (Band, Choir, Orchestra, Theater Arts, and Auditorium Areas with Interior Circulation & Connecting Corridors)
- Construct Site Improvements (Landscape, Irrigation, Drainage, Site Utilities, & Hardscape)
- Construction Budget = \$ 6,000,000





# 2015 Bond Nimitz MS Fine Arts Addition (New Band and Choir Facilities) Project Schematic Design Presentation



## Questions ?