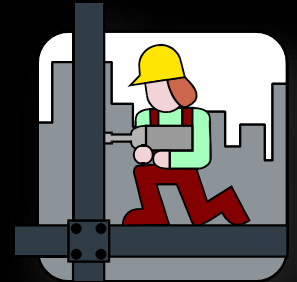




North East Sports Park Pool and Baseball Facility Upgrades Schematic Design Presentation 2015 Bond Program



Garrett J. Sullivan, Executive Director
Construction Management and Engineering Department

September 12, 2016

Schematic Design Presentation Agenda

- Project Design Team
- Program Review
- Project Site Analysis
- Concept Design Plans
- Budget Review
- Schedule Review
- Staff Recommendation



North East Sports Park Design Team

- Architect: PBK
- MEP Engineer: MS2 Consulting Engineers
- Structural Engineer: Alpha Consulting Engineers
- Civil Engineer: MTR Engineers
- Roofing Engineer: Wiss, Janey, Elstner & Associates
- Technology Engineer: Combs Consulting Group
- Fire Protection/Building Code Engineer: Protection Development, Inc.
- Landscape Architect: Cooper-Lochte Landscape Architects
- Acoustical Engineer: BAI
- Geotechnical & Material Testing: Fugro Consultants
- Test, Balance, and Commissioning: Engineered Air Balance



North East Sports Park Site Aerial



Facility Site Aerial

North East Sports Park
North East ISD

2015 Bond Program for North East Sports Park

- Renovate Pool Area for District Aquatics Training and use as a Campus Recreational Facility

North East Sports Park Site Aerial – Pool Facility



Pool Facility Site Aerial

North East Sports Park
North East ISD

2015 Bond Program for North East Sports Park

- 1. Renovate existing Pool for Aquatic Training & Campus Recreational Activities**
 - a. Install New Pool Liner with Lane Markings and Pool Depths**
 - b. Renovate Administrative Support Building (Interior Renovations and Add HVAC System)**
 - c. Renovate Locker Room & Shower Bldg. (Interior Renovations and Add Roof & HVAC System)**
 - d. Renovate Pool Lounge Building (Interior Renovations and Add HVAC System)**
 - e. Renovate Mechanical Building (Install New Pool Equipment Package)**
 - f. Expand Pool Deck Area and Add Shade Structures around Deck Perimeter**
 - g. Add additional Parking Spaces for dedicated Pool Use**

North East Sports Park Pool Facility Site Analysis



SWIMMING POOL AREA UPGRADES

POOL LINER

NEW POOL EQUIPMENT

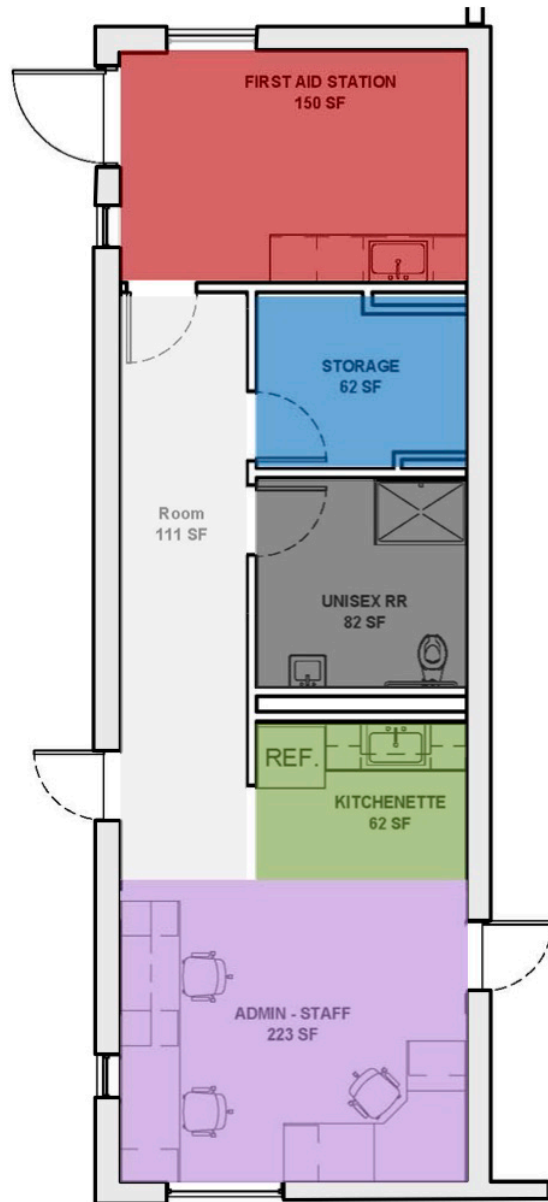
RENOVATED LOCKER ROOM AND
SHOWERS

RENOVATED LOUNGE AREA

EXPANDED POOL DECK

ADDING SHADING
STRUCTURES

North East Sports Park Pool Administrative Building



ADMINISTRATION BUILDING

INTERIOR AND EXTERIOR RENOVATION, AIR
CONDITIONED.

FIRST AID STATION—150 S.F.

BASE CABINET AND WALL CABINETS
SINK WITH HOT AND COLD WATER
ICE MACHINE

STORAGE / IDF ROOM —62 S.F.

UNISEX RESTROOM—82 S.F.

SHOWER

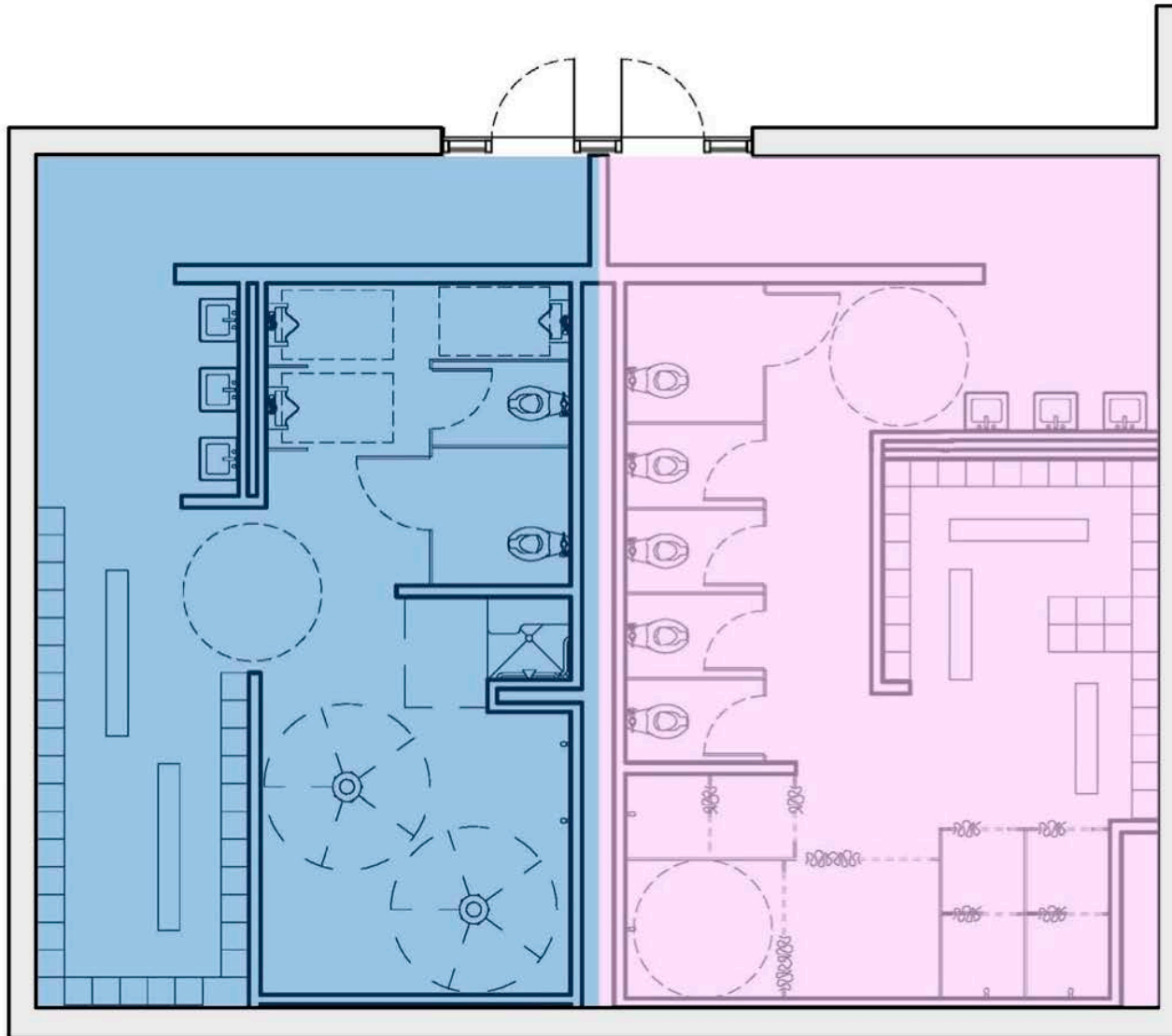
KITCHENETTE AREA—62 S.F.

REFRIGERATOR
BASE CABINETS AND WALL CABINETS
SINK WITH HOT AND COLD WATER

ADMIN— STAFF AREA—223 S.F.

THREE WORK STATIONS

North East Sports Park Pool Locker Room & Showers



MEN'S AND LADIES LOCKER ROOMS

**COMPLETELY RENOVATED LOCKER ROOMS
AND SHOWERS— 1350 S.F.**

NEW SHOWER ROOMS

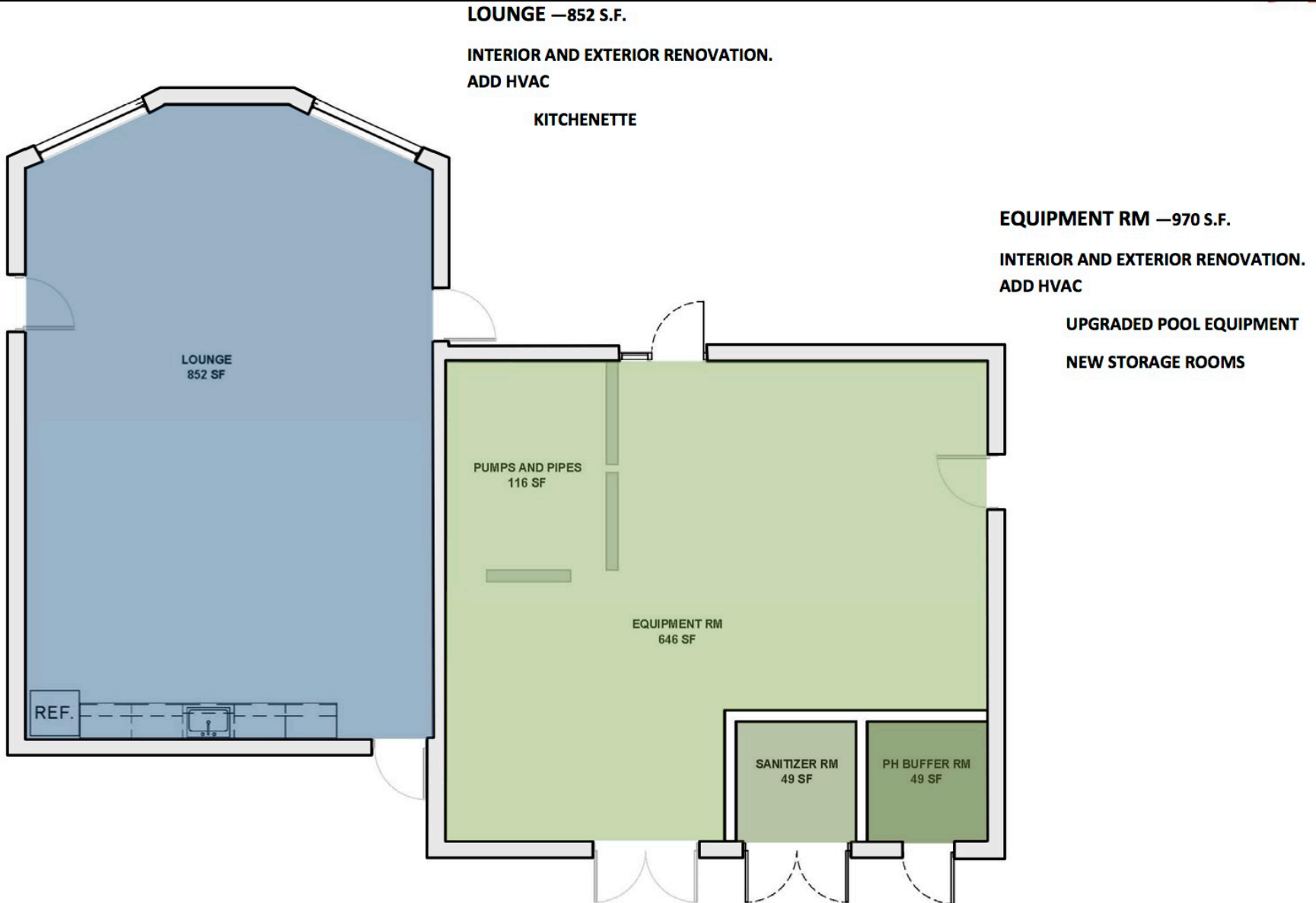
60 LOCKERS FOR EACH GENDER

NEW ROOF ON BUILDING

AIR CONDITIONED SPACES

NATURAL DAYLIGHTING

North East Sports Park Pool Lounge and Equipment Rm.



North East Sports Park Pool Facility Aerial Perspective



Pool Facility Aerial Perspective

*North East Sports Park
North East ISD*

North East Sports Park Pool-Level Perspective



Pool-Level Perspective

*North East Sports Park
North East ISD*

2015 Bond Program for North East Sports Park

- Convert 1 existing Ballfield into a UIL Regulation Competition High School Baseball Field Facility

North East Sports Park Site Aerial – Baseball Facility



Baseball Fields Site Aerial

North East Sports Park
North East ISD

2015 Bond Program for North East Sports Park

- 1. Convert 1 existing Ballfield into a UIL Regulation High School Baseball Field**
 - a. Install Artificial Sports Turf for Infield & Outfield Areas with Safety Warning Track**
 - b. Install Bleacher Seating for 1,500 (~ 500 Chair-Back and ~ 1000 Bench Seats)**
 - c. Install Shade Cover for Bleacher Seating Area**
 - d. Install Facility Lighting for UIL Competition Baseball Play**
 - e. Install Field-Recessed Home and Visitor Dug Outs**
 - f. Install Baseball Press Box and New Scoreboard for Game Control**
 - g. Install new Flatwork for Access & Egress to Baseball Field Facility**
 - h. Install Baseball Outfield Fence with 320 ft. at Foul Lines, 350 ft. up the Alleys and 380 ft. at Center Field**

North East Sports Park Baseball Facility Master Plan



Baseball Facility Master Plan

North East Sports Park
North East ISD

North East Sports Park Baseball Facility Master Plan



2015 Bond Program will build the N.E. Field

*North East Sports Park
North East ISD*

[illegible]

North East Sports Park
North East ISD

North East Sports Park Baseball Facility Bleacher Seating and Press Box



Baseball Facility Bleacher Seating & Press Box

*North East Sports Park
North East ISD*

North East Sports Park Baseball Facility Artificial Sports Turf for Infield and Outfield Areas



Baseball Facility Artificial Sports Turf Field

*North East Sports Park
North East ISD*

North East Sports Park Baseball Facility Field Perspective



Baseball Facility Field Perspective

*North East Sports Park
North East ISD*

North East Sports Park Baseball Facility Shade Cover Structure and Light Towers



Baseball Facility Shade Cover & Light Towers

*North East Sports Park
North East ISD*

North East Sports Park Baseball Facility Main Entrance Pavilion Perspective



Baseball Facility Main Entrance Pavilion

*North East Sports Park
North East ISD*

2015 Bond Budget for North East Sports Park Project

| | |
|-------------------------|-------------------|
| • Design Account: | \$ 1,125,000 |
| • Construction Account: | \$ 8,750,000 |
| • Technology Account: | \$ 25,000 |
| • FF&E Account: | <u>\$ 100,000</u> |
| TOTAL BOND PROGRAM = | \$ 10,000,000 |

2015 Bond Design & Construction Timeline



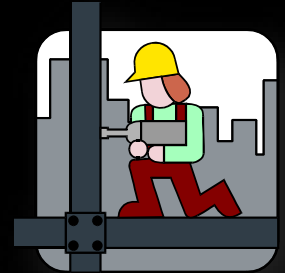
North East Sports Park 2015 Bond Project

District Staff Recommendation

- Recommend Approval of North East Sports Park Schematic Design Presentation which Constructs the following 2015 Bond-Approved Program Elements:
 - Renovate Facilities at the Pool Facility to support District Aquatics Training Programs and Campus Recreational Activities
 - Convert 1 Ballfield into a UIL Regulation Competition Baseball Field
 - Construction Budget = \$8,750,000
 - Pool Facility Renovations = \$2,750,000
 - Baseball Facility Improvements = \$6,000,000



North East Sports Park Pool and Baseball Facility Upgrades Schematic Design Presentation 2015 Bond Program



Questions ?