

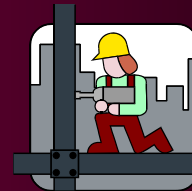
Middle School Science Lab Facilities Bid Award Presentation 2003 Bond Program



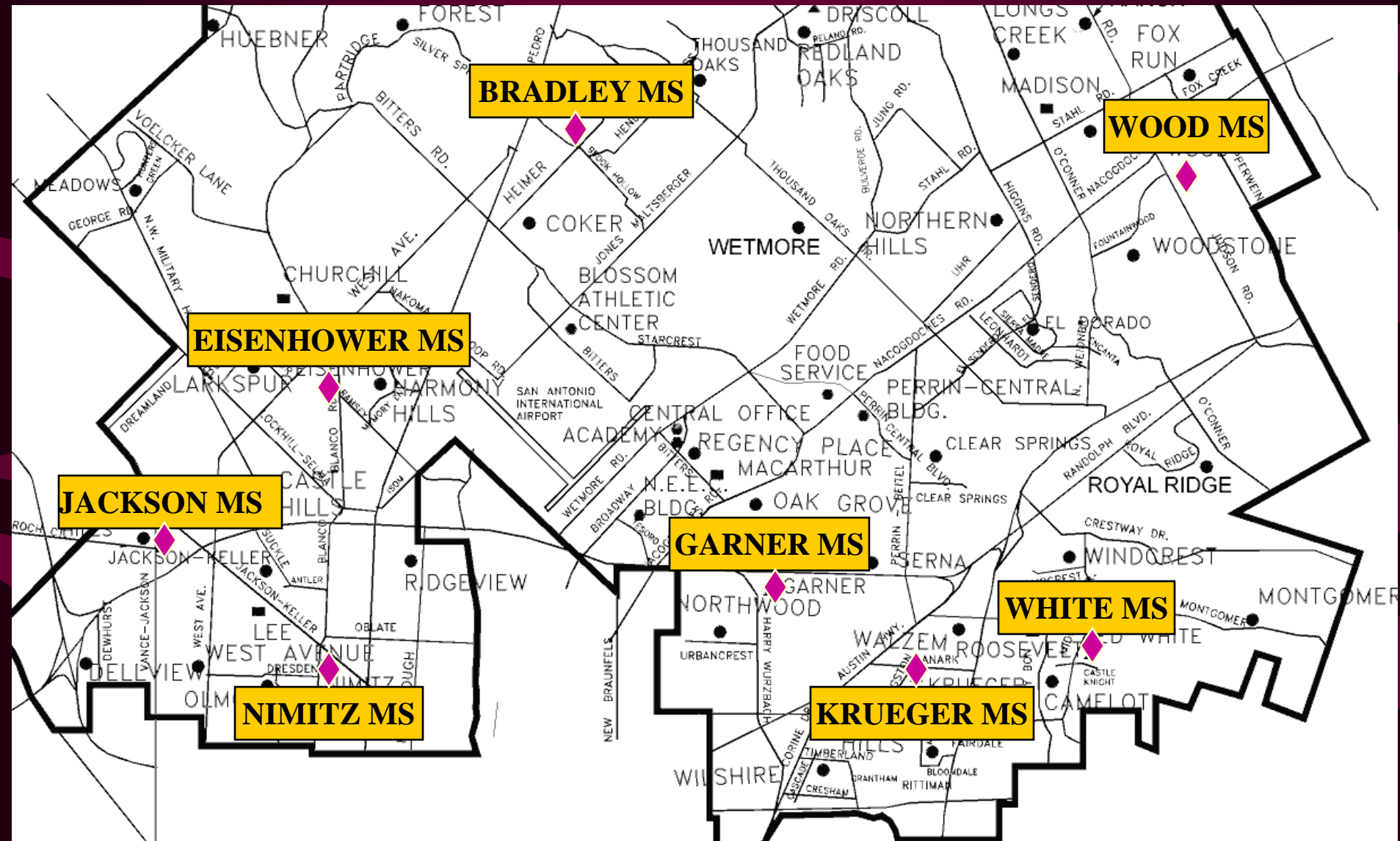
**Garrett J. Sullivan, Executive Director
Construction Management & Engineering Department**



June 20, 2005



Middle School Science Facilities Sites



MS Science Lab Facilities – 2003 Bond Program

- Construct New Science Lab Facilities at 8 Middle School Campuses and Provide Clinic Expansion/Renovations at 2 Campuses:
 - **Middle School Science Lab Campuses:**
 - Bradley, Eisenhower, Jackson, Garner, Krueger, Nimitz, White, and Wood
 - **Each Science Lab Facility includes:**
 - 8 Science Labs
 - Centralized Chemical and Preparatory Storage Areas
 - Science Department Offices
 - Safety Equipment
 - **Middle School Clinic Expansion/Renovation Campuses:**
 - Driscoll and White
- Connect Facility to existing Facilities through a Covered Walkway or Connecting Corridor
- Eisenhower Campus – Admin Area Expansion/Renovation
- White Campus – Clinic Expansion/Renovation
- Driscoll Campus – Clinic Expansion/Renovation

MS Science Lab Facilities – Program Analysis

- Construct New Science Lab Facilities at 8 Middle School Campuses:
 - Each Science Lab Facility includes:
 - Bradley, Eisenhower, Jackson, Garner, Krueger, Nimitz, White, and Wood
 - 8 Science Labs
 - Centralized Chemical Storage Area
 - 3 Preparatory Storage Areas (1 adjacent to each Grade-Level)
 - Science Department Offices (Office and Workroom)
 - Safety Equipment integrated in Labs and Prep Areas
- Connect Facility to existing Facilities through a Covered Walkway or Connecting Corridor
 - Covered Walkway at 7 Campuses (One-Story Prototype Facility)
 - Enclosed Corridor at Nimitz (2 Story Prototype Facility)
- Eisenhower Campus – Admin Area Expansion/Renovation
- White Campus – Clinic Expansion/Renovation
- Driscoll Campus – Clinic Expansion/Renovation
- Nimitz Admin – Area Expansion (Add to Bond Program)
- Bradley – Faculty Restrooms Upgrade (Add to Bond Program)
- Garner – HVAC Upgrade at Admin Area (Add to Bond Program)

Budget Summary

Construction Account	\$ 29,990,301
Locker Account (1)	\$ 1,500,000
Design Account	\$ 2,966,103
Technology Account	\$ 1,298,809
FF&E Account	\$ 559,502
CM Services	\$ 784,721
Bid Contingency	\$ 749,758
Construction Contingency	\$ 1,499,511
ROCIP Contingency	<u>\$ 901,295</u>
Grand Total All Middle School Projects	\$ 40,250,000

Note 1 – Locker upgrades to be completed under a separate project

Bid Award Analysis

- Bid Opening
 - 8 Science Lab Facilities, 2 Clinic Projects, Site Work and Parking Improvements
 - Base Bid Cost = \$35,509,000.00
-
- Alternate #1A and 1B (Connecting Canopies) = \$ 274,000.00 (03 Bond)
 - Alternate #2A and 2B (Flex Duct in lieu Hard Elbows) = \$ - 10,000.00 (03 Bond)
 - Alternate #3A and 3B (Off Site CE Improvements) = \$ 205,000.00 (03 Bond)
 - Alternate #5A (Nimitz Admin Relocation/Renovation) = \$ 243,000.00 (98 Bond)
 - Alternate #5B (Bradley Restroom Upgrades) = \$ 92,000.00 (98 Bond)
 - Alternate #7B (Garner Admin HVAC Upgrade) = \$ 54,000.00 (98 Bond)
 - Value Engineering = \$ - 2,599,124.00 (03 Bond)
 - Combination Deduct for Award of Both Bid Packages = \$ - 140,000.00 (03 Bond)
-
- Base Bid, Alternates and Value Engineering SubTotal = \$ 33,627,876.00
-
- 2003 Bond Budget = 32,239,570.00
-
- Total Value Over Budget = \$1,388,306.00
-
- 2003 Bond Funding = \$33,238,876.00 (Over Budget = \$999,306.00)
 - 1998 Bond Funding = \$389,000.00

2003 Bond – Executive Design & Construction Summary

Project Name	Project Status	Project Completion/Opening
*****	Middle School Science Labs / Clinics	*****
Bradley MS Science	Bid Opening – 1 Jun 2005	Dec 07 / Jan 08
Eisenhower MS Science	Bid Opening – 1 Jun 2005	Mar 07 / Apr 07
Garner MS Science	Bid Opening – 1 Jun 2005	Apr 07 / May 07
Jackson MS Science	Bid Opening – 1 Jun 2005	Nov 07 / Dec 07
Krueger MS Science	Bid Opening – 1 Jun 2005	Jan 07 / Feb 07
Nimitz MS Science	Bid Opening – 1 Jun 2005	Sep 07 / Oct 07
White MS Science	Bid Opening – 1 Jun 2005	May 07 / Jun 07
Wood MS Science	Bid Opening – 1 Jun 2005	Aug 07 / Sep 07
Eisenhower MS Admin	Bid Opening – 1 Jun 2005	Oct 06/Nov 06 & Aug07/Sep07
Nimitz MS Admin	Bid Opening – 1 Jun 2005	Dec 06 / Jan 07
Driscoll MS Clinic	Bid Opening – 1 Jun 2005	Aug 06 / Sep 06
White MS Clinic	Bid Opening – 1 Jun 2005	Oct 06 / Nov 06

Timeline

- Schematic Design Approval – 9 Aug 04
- Design/Construction Document Development – 10 Aug 04 thru 11 Apr 05
- Bidding Period (RFCSP) – 12 April thru 3 June 2005

2 Bid Packages with 4 Science Facilities per Package

- Bid Opening – 3 June 2005
- Contract Award – 20 June 2005
- Pre-Construction Services – 21 June thru 14 August 2005
 - Various CE Improvements will be completed during Summer 2005
- Notice to Proceed with Construction – 15 August 2005
- Construction Period – 15 August 2005 thru 31 March 2008
- Move-In Period – Various
- Science Facilities Open – Various

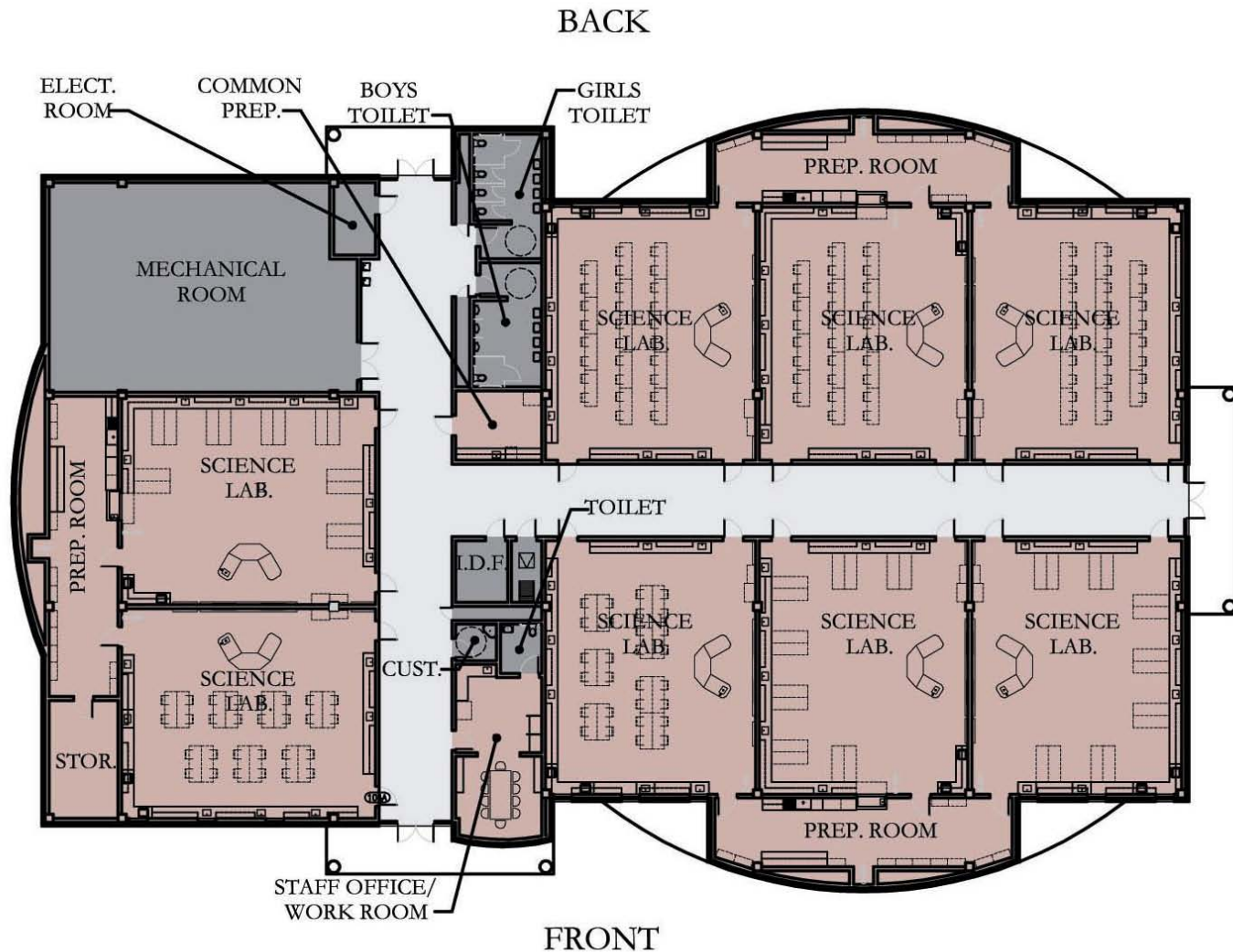
Middle School Science Facility One-Story Prototype



Left Entry Version

One Story Prototype

Left Entry Version

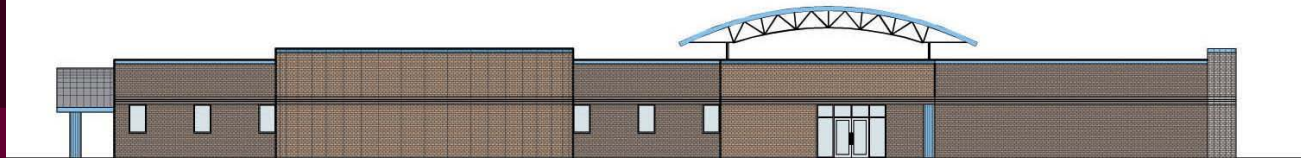


Occurs at:
Bradley
Garner
Krueger
Wood

One Story Prototype Building Elevations



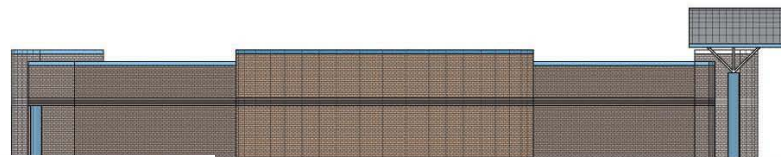
Front Elevation



Back Elevation



Right Elevation



Left Elevation

Left Entry Version

Middle School Science Facility One-Story Prototype

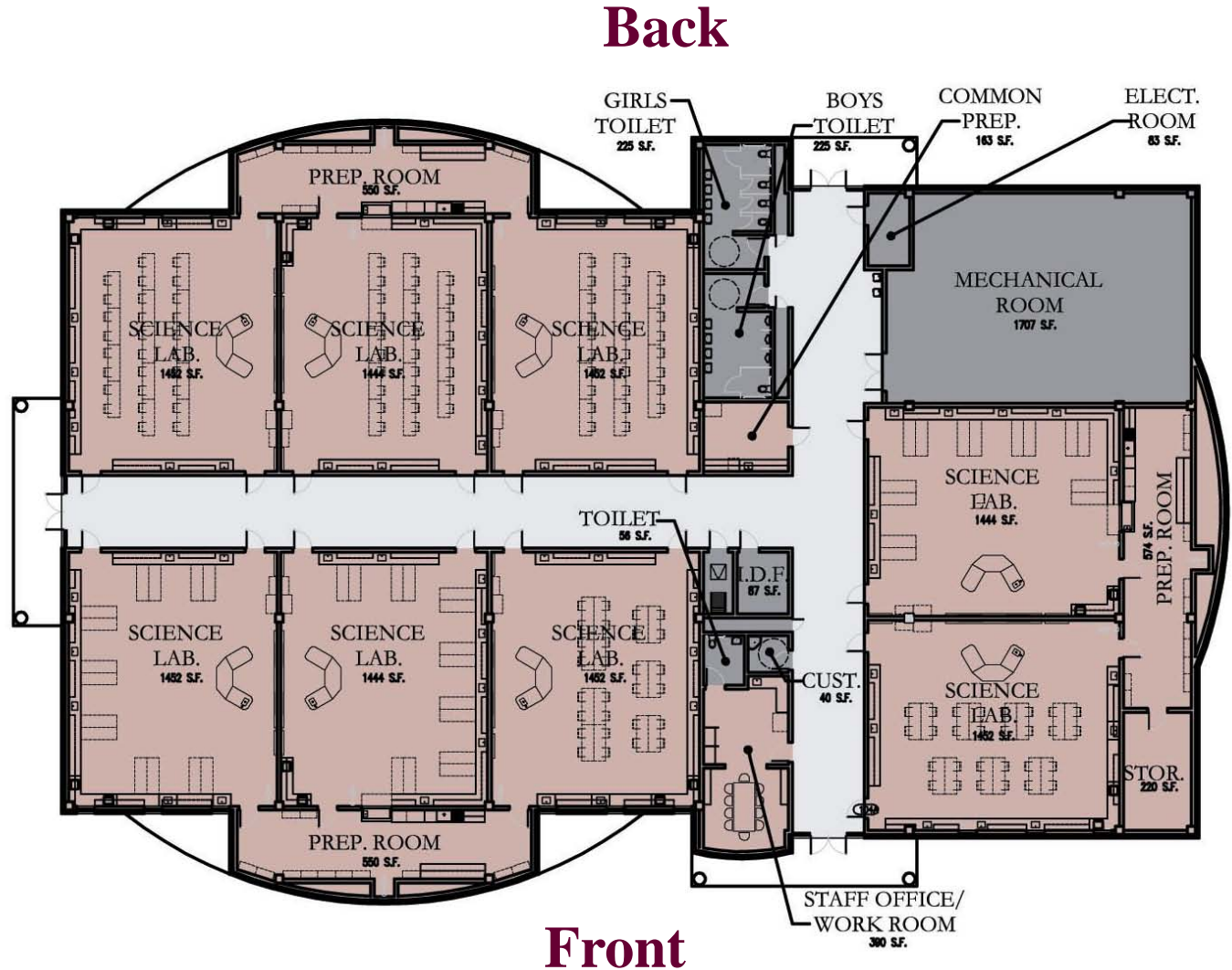


Right Entry Version

One Story Prototype

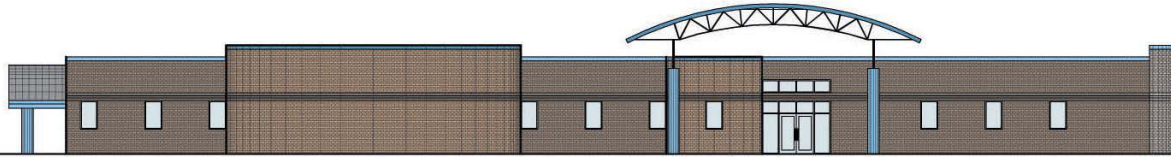
Right Entry
Version

Occurs at:
Eisenhower
Jackson
White

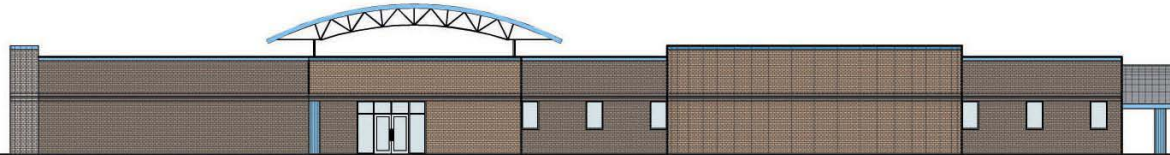


One Story Prototype Building Elevations

Right Entry Version



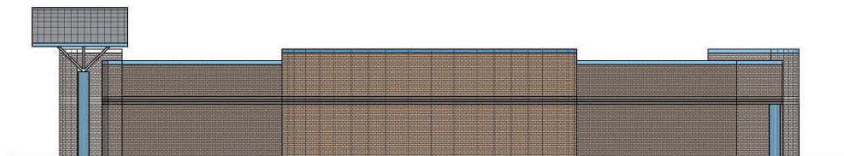
Front Elevation



Back Elevation

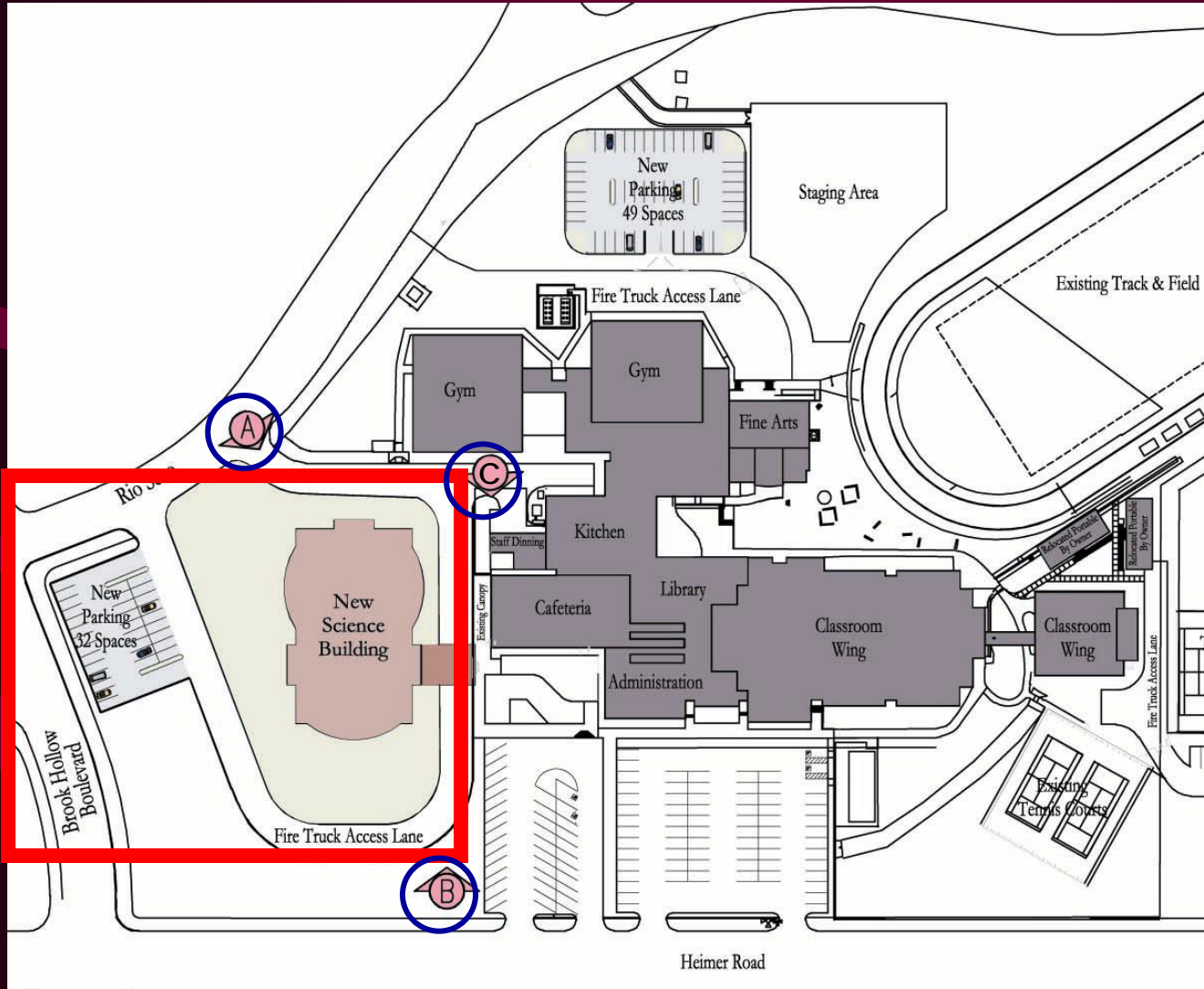


Left Elevation



Right Elevation

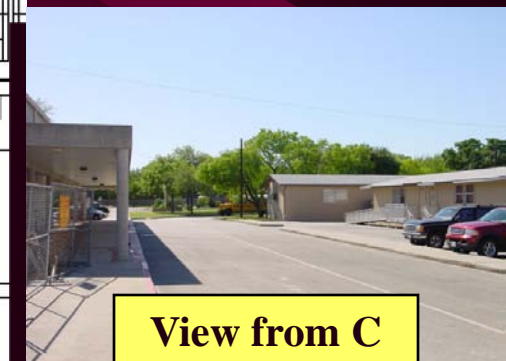
Bradley Middle School Site Plan



View from A

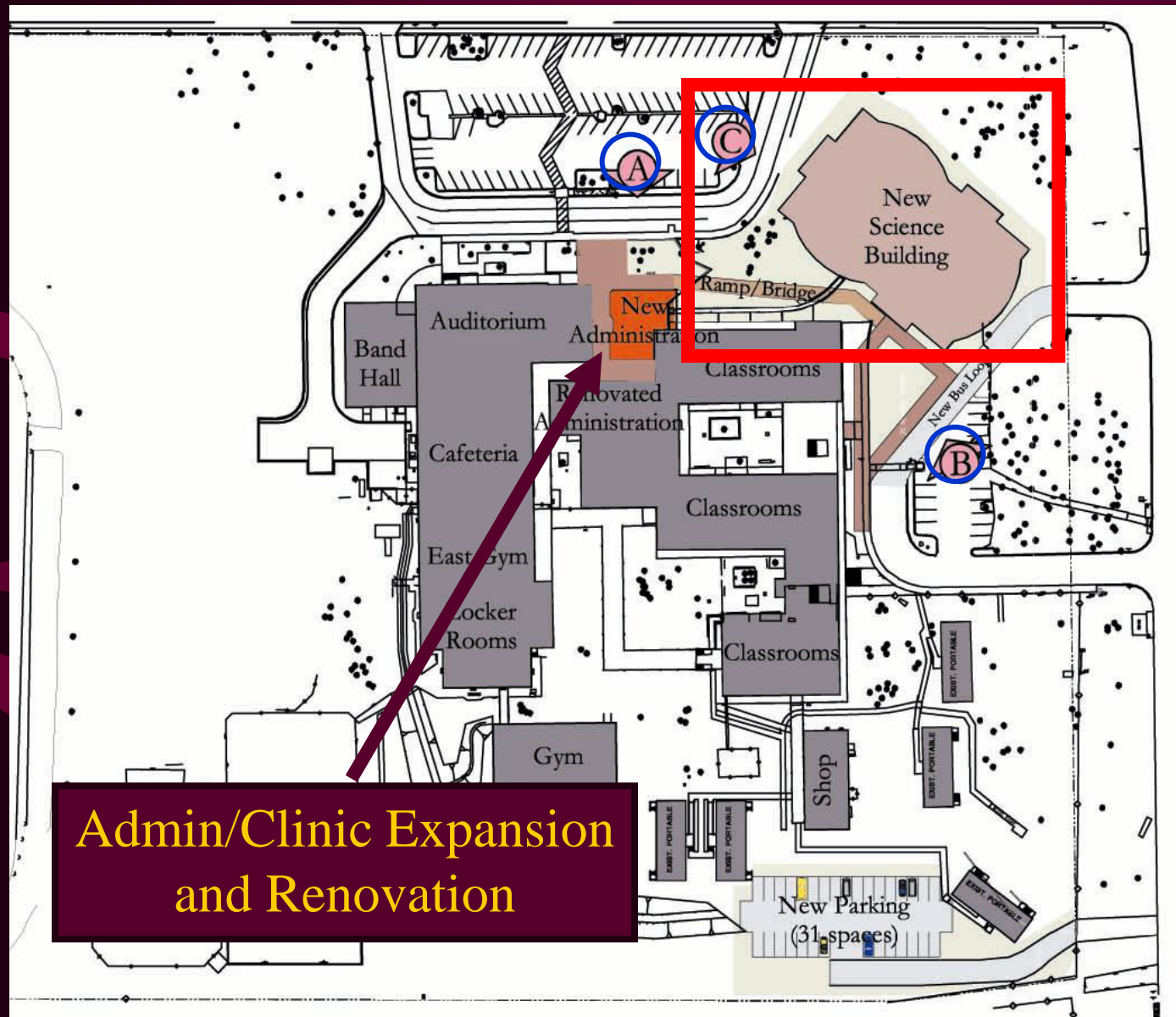


View from B

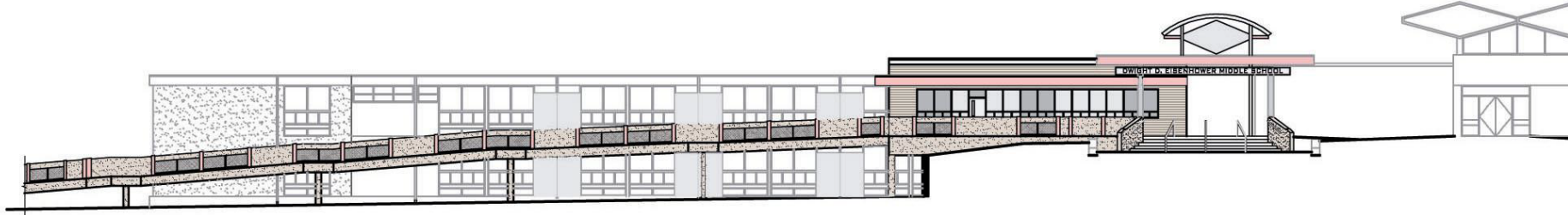


View from C

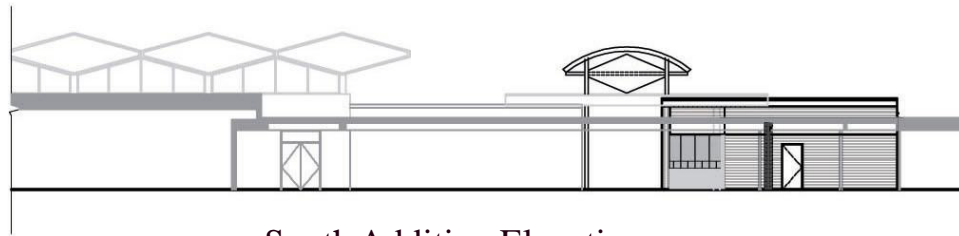
Eisenhower Middle School Site Plan



Eisenhower Elevations



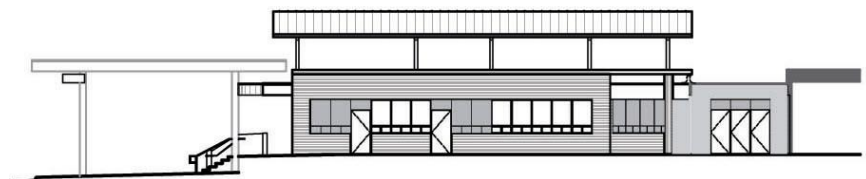
North Addition Elevation



South Addition Elevation

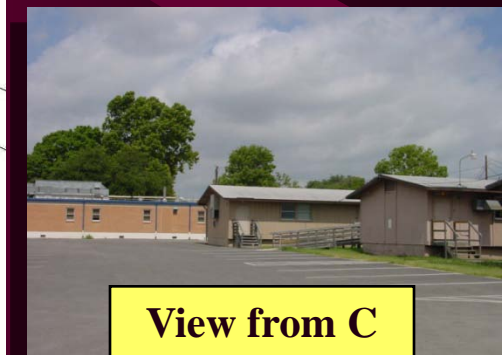
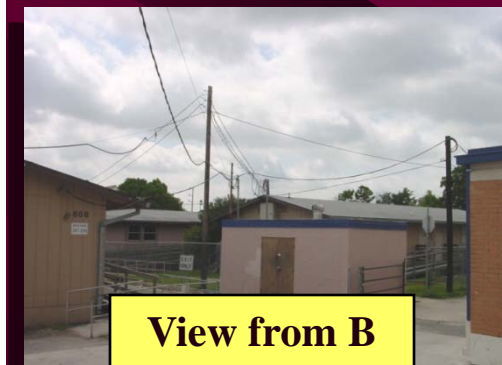
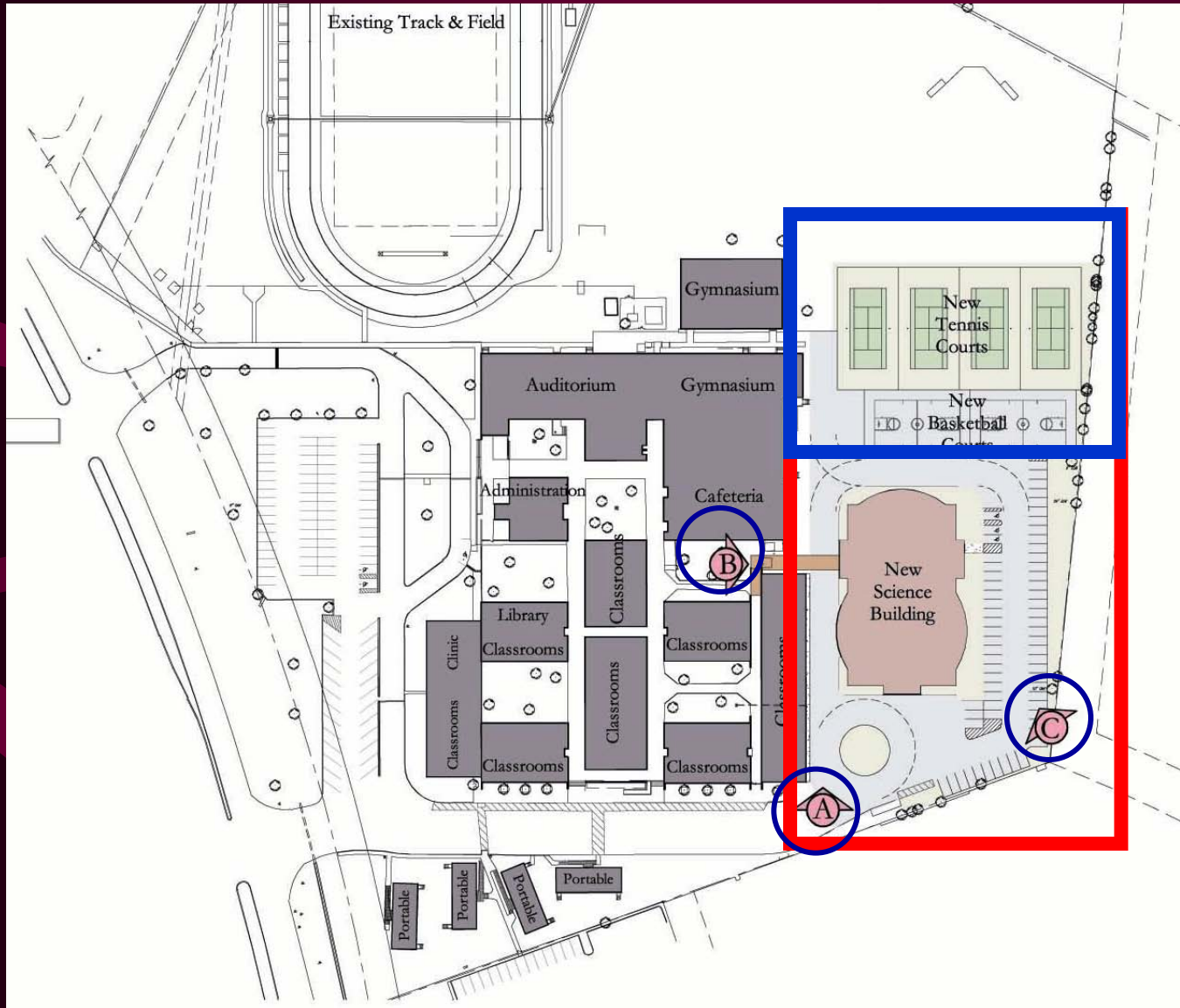


East Addition Elevation

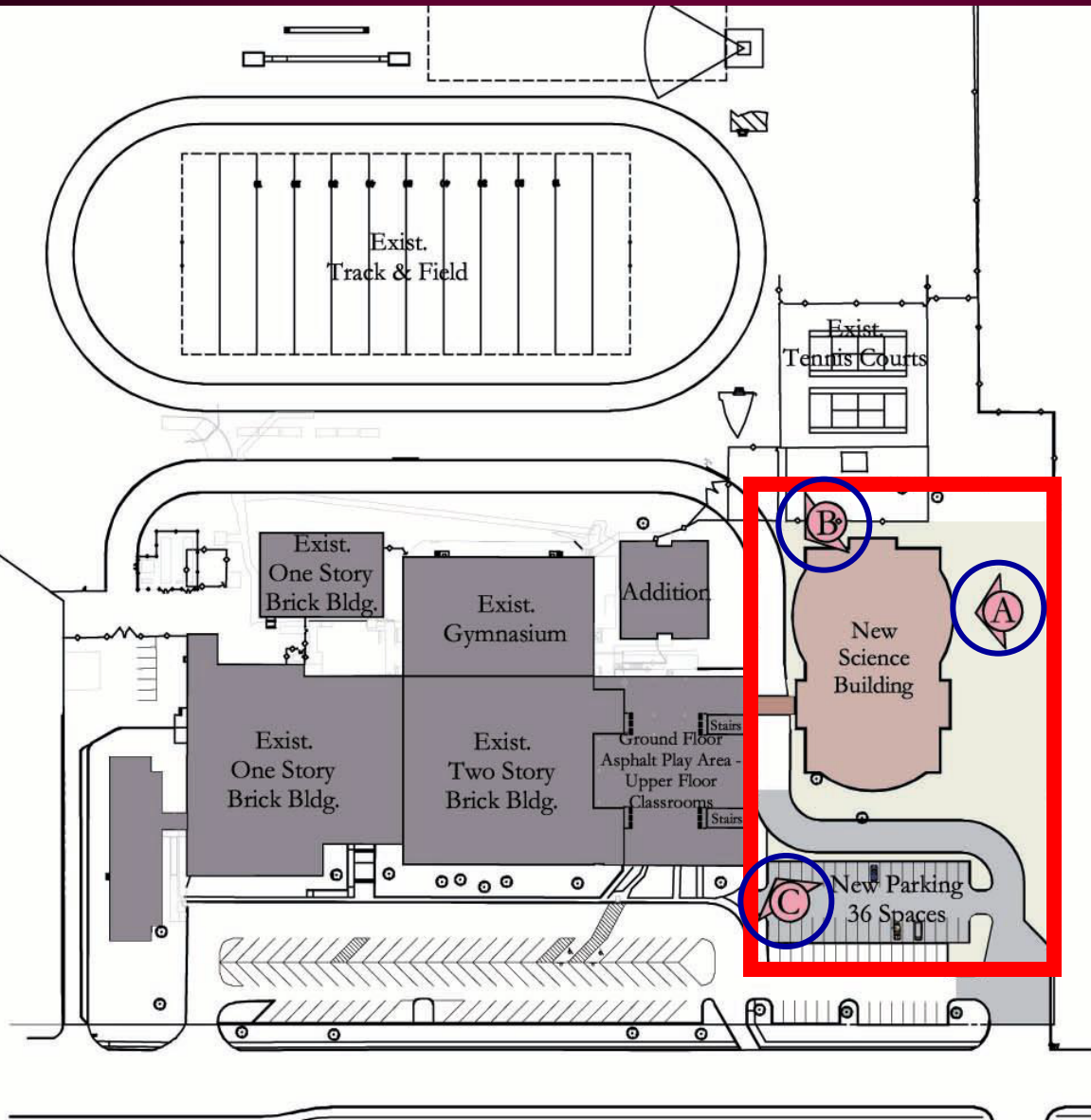


West Addition Elevation

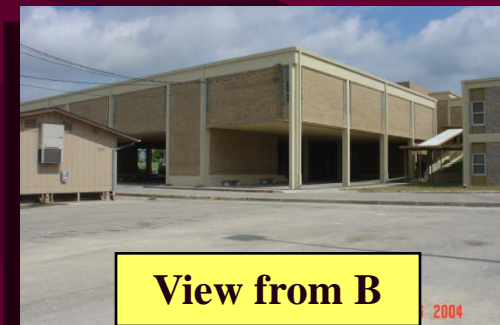
Garner Middle School Site Plan



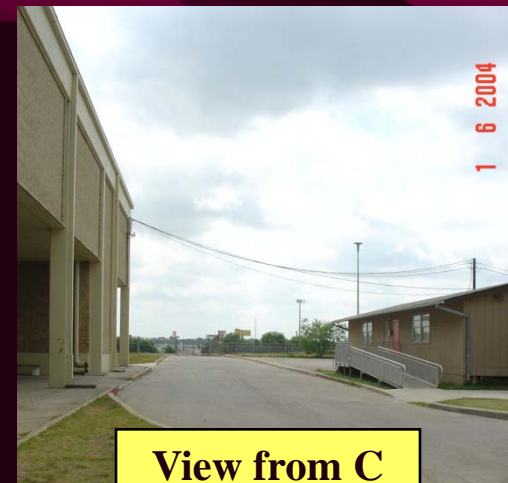
Jackson Middle School Site Plan



View from A

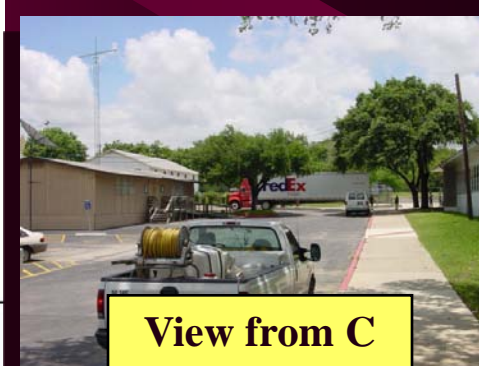
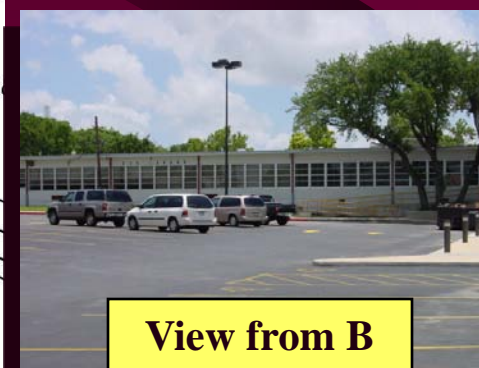
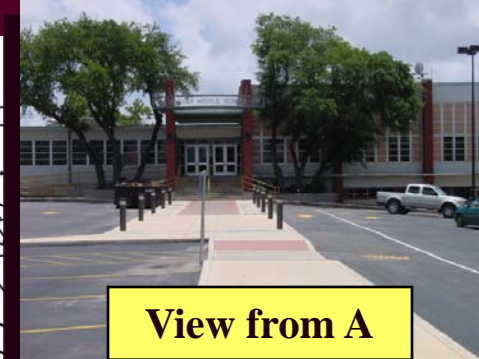
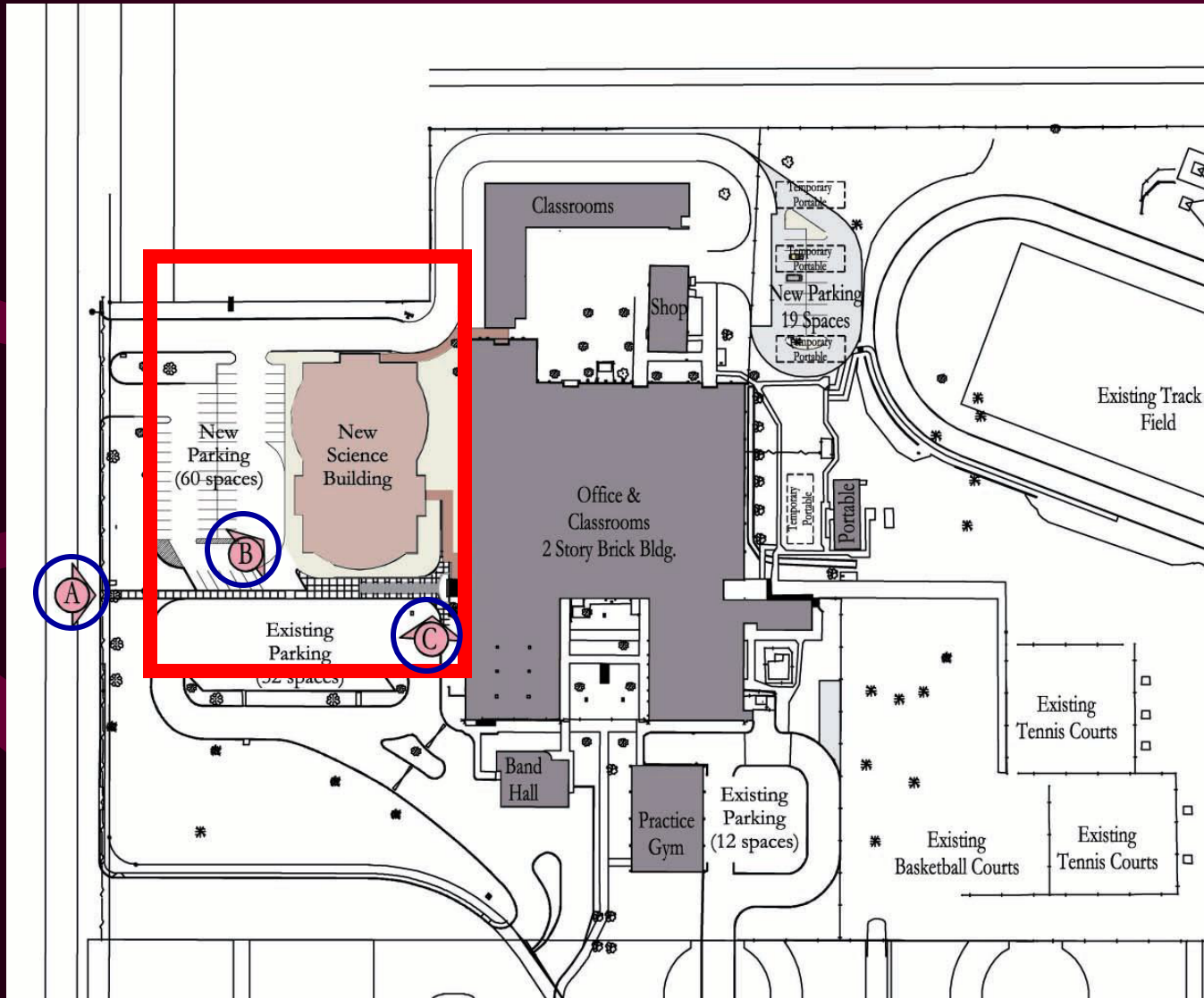


View from B



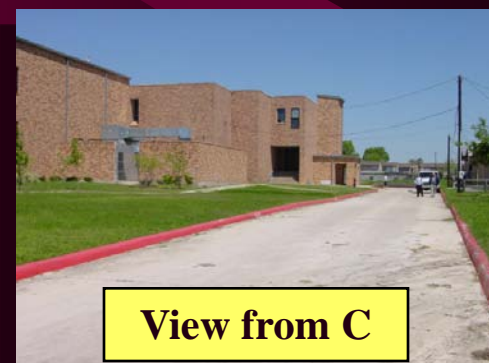
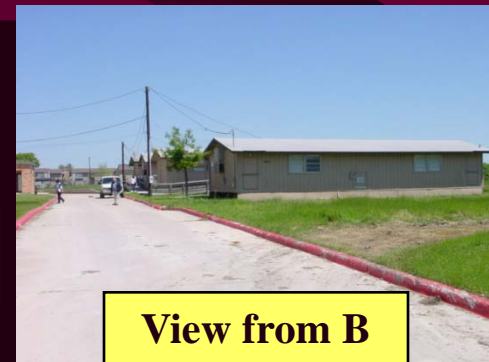
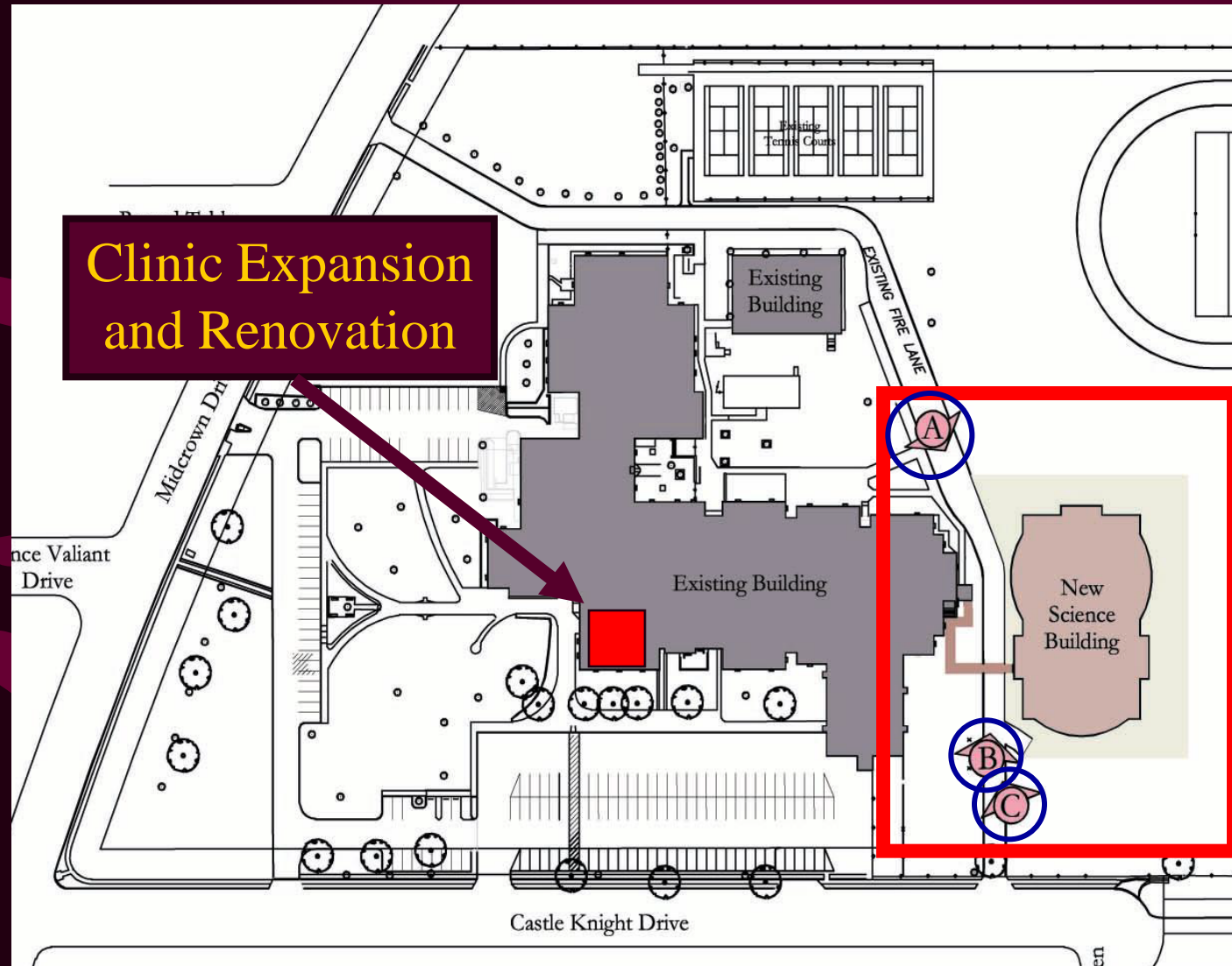
View from C

Krueger Middle School Site Plan

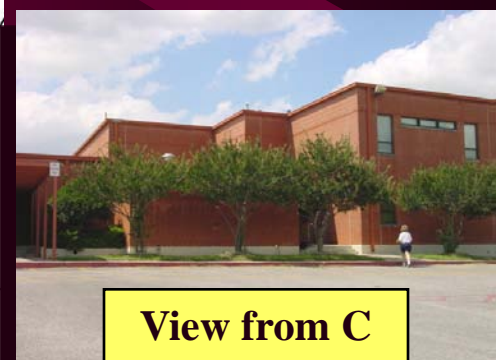
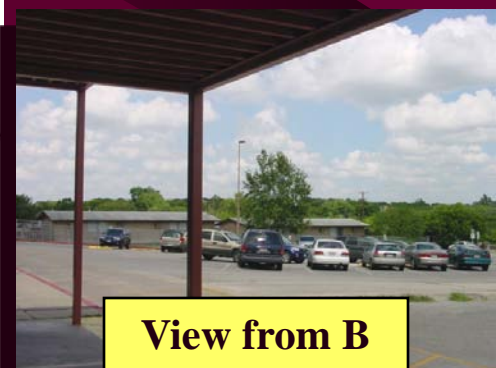
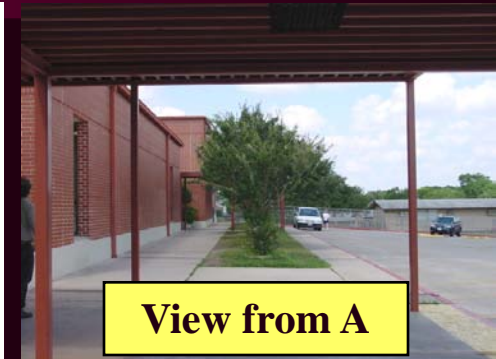
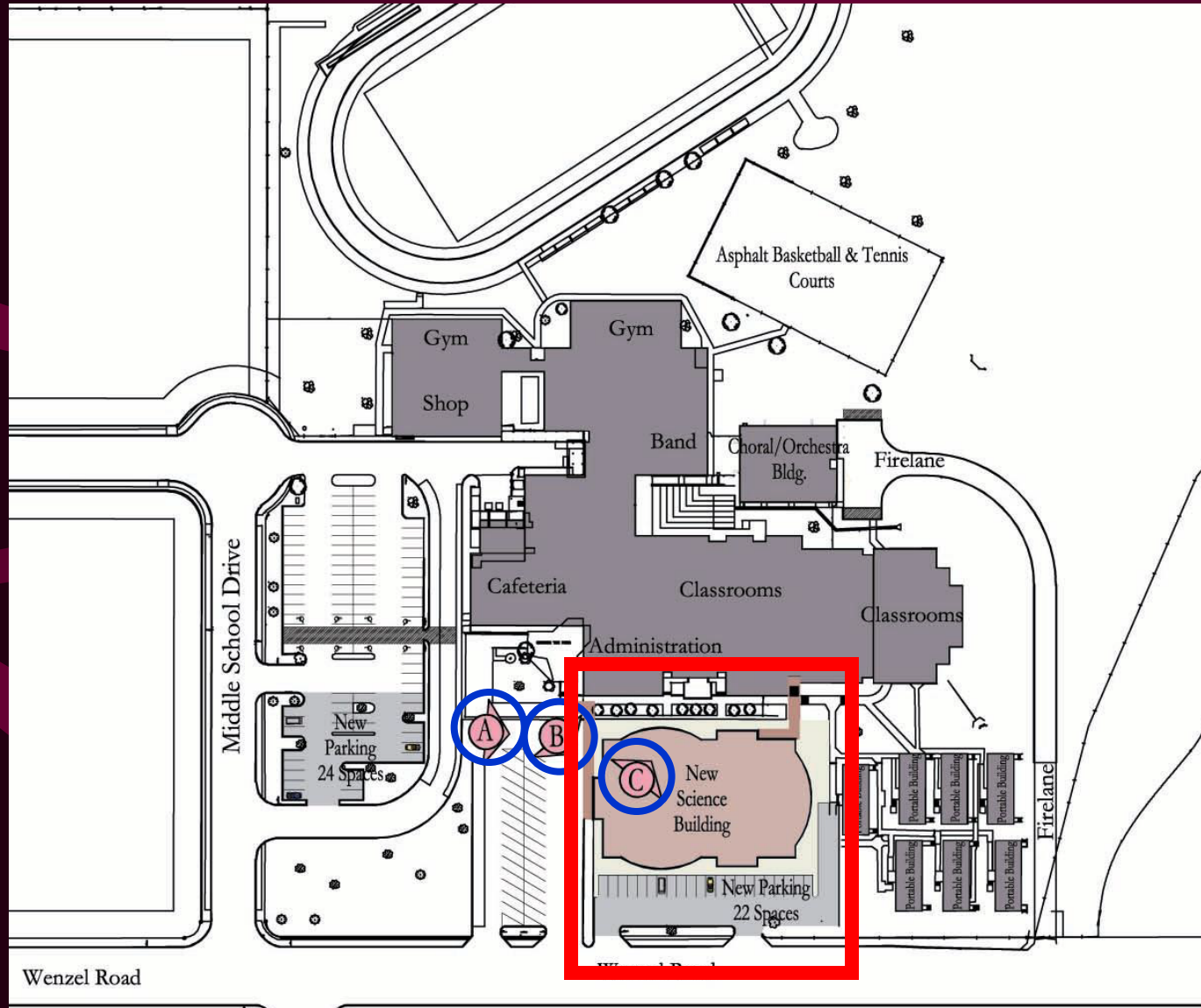


White Middle School Site Plan

**Clinic Expansion
and Renovation**



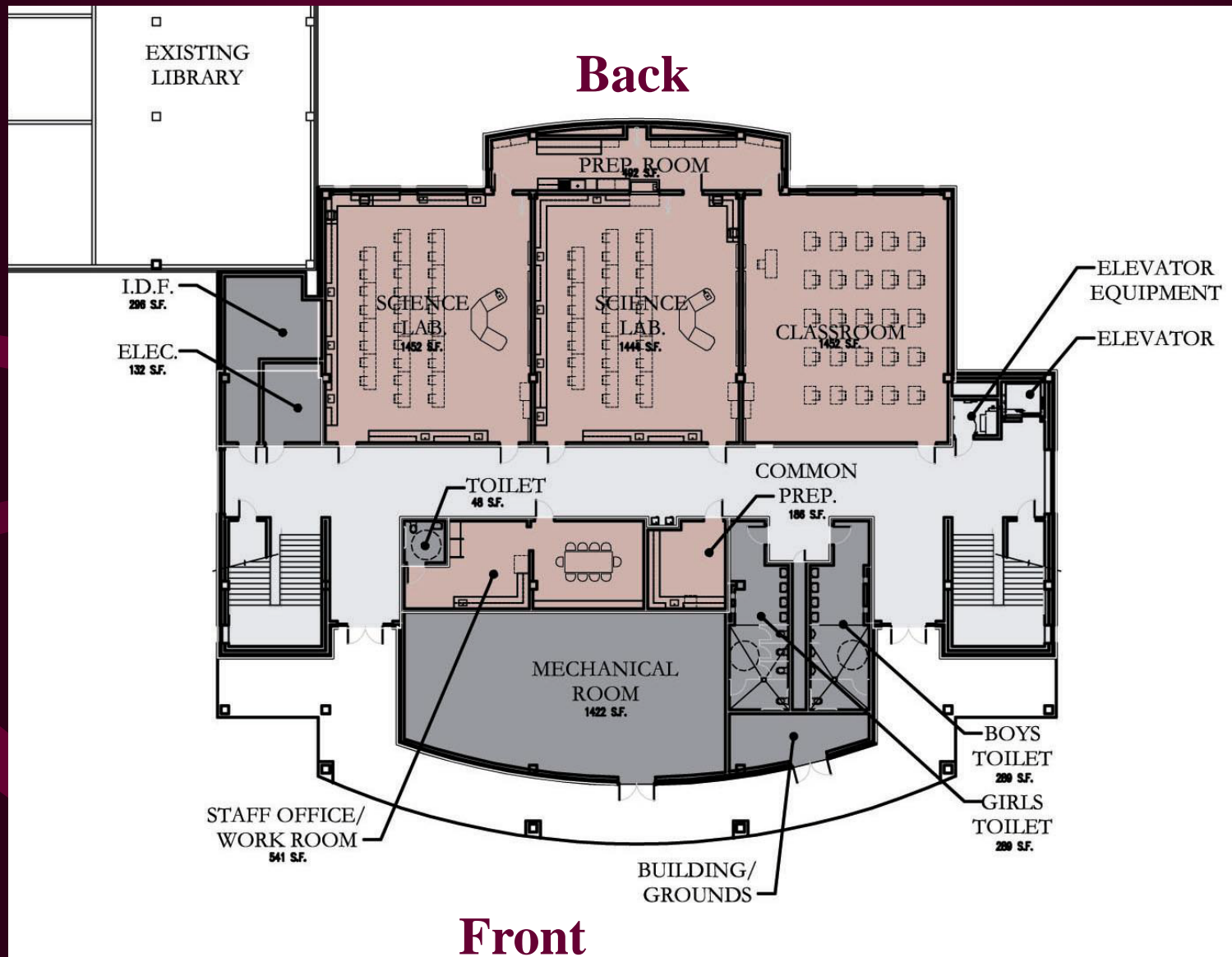
Wood Middle School Site Plan



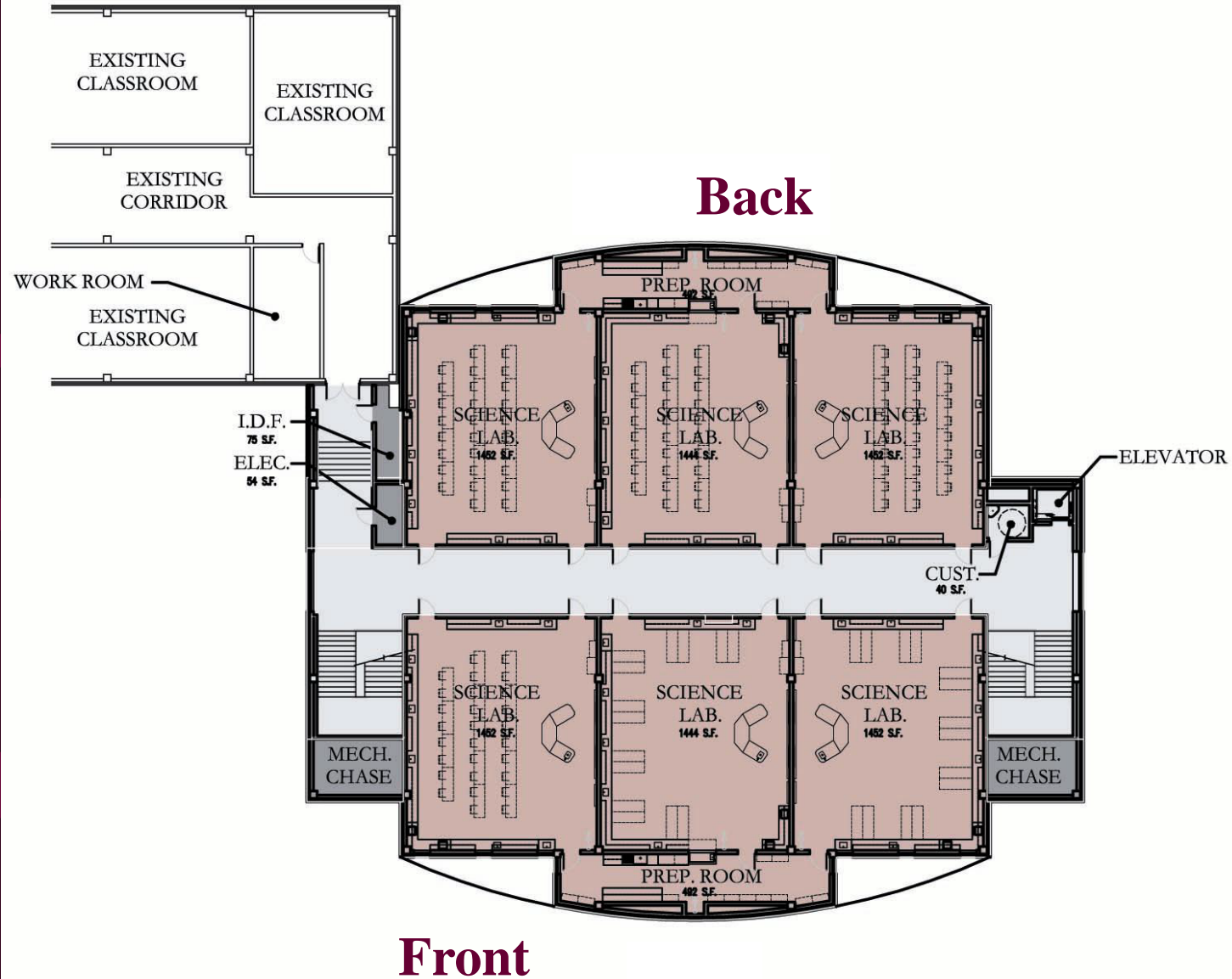
Two Story Prototype Nimitz Middle School



Two Story Building – First Floor Plan



Two Story Building – 2nd Floor Plan



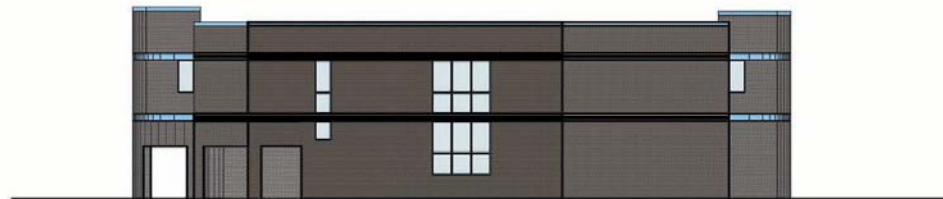
Two Story Building Elevations



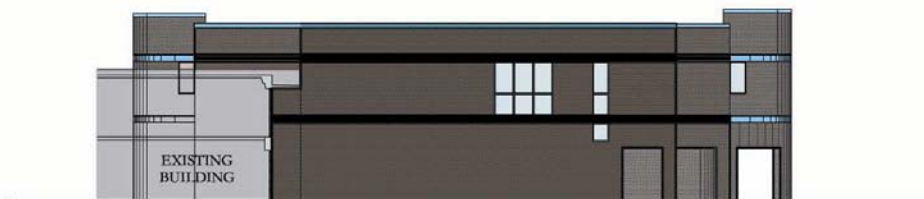
Front Elevation



Back Elevation

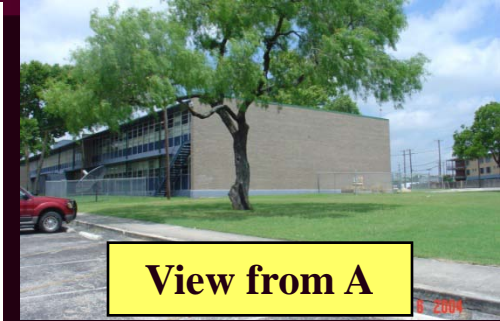
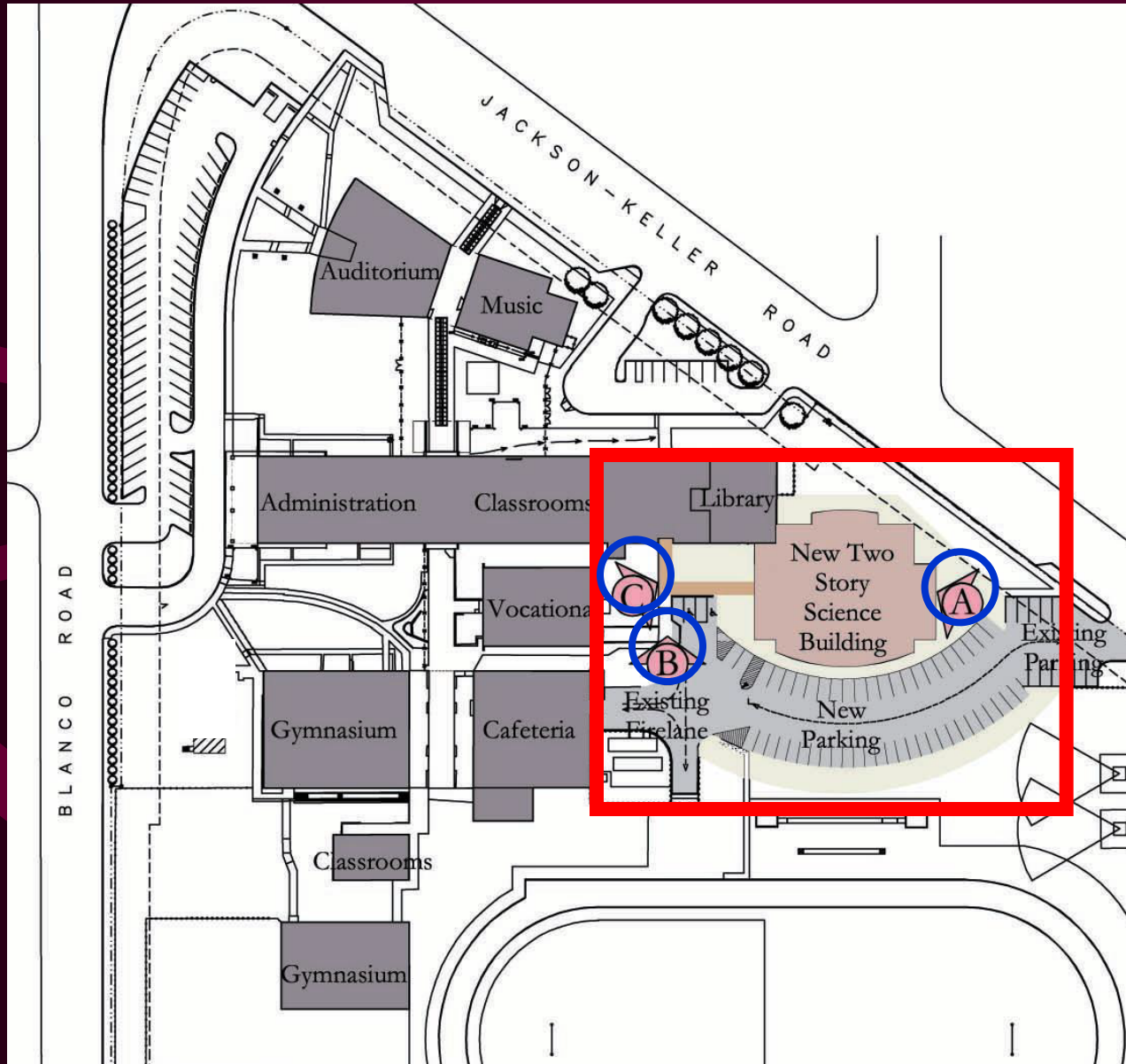


Elevation



Elevation

Nimitz Middle School Site Plan



View from A



View from B



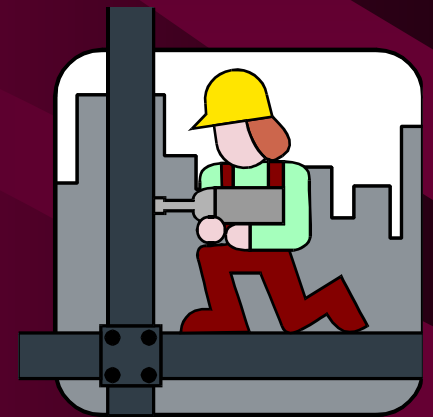
View from C

Science Lab



Summary Presentation

Middle School Science Lab Facilities 2003 Bond Program



Questions?